



Attendance Updates

August 21, 2023



STUDENT ATTENDANCE MATTERS

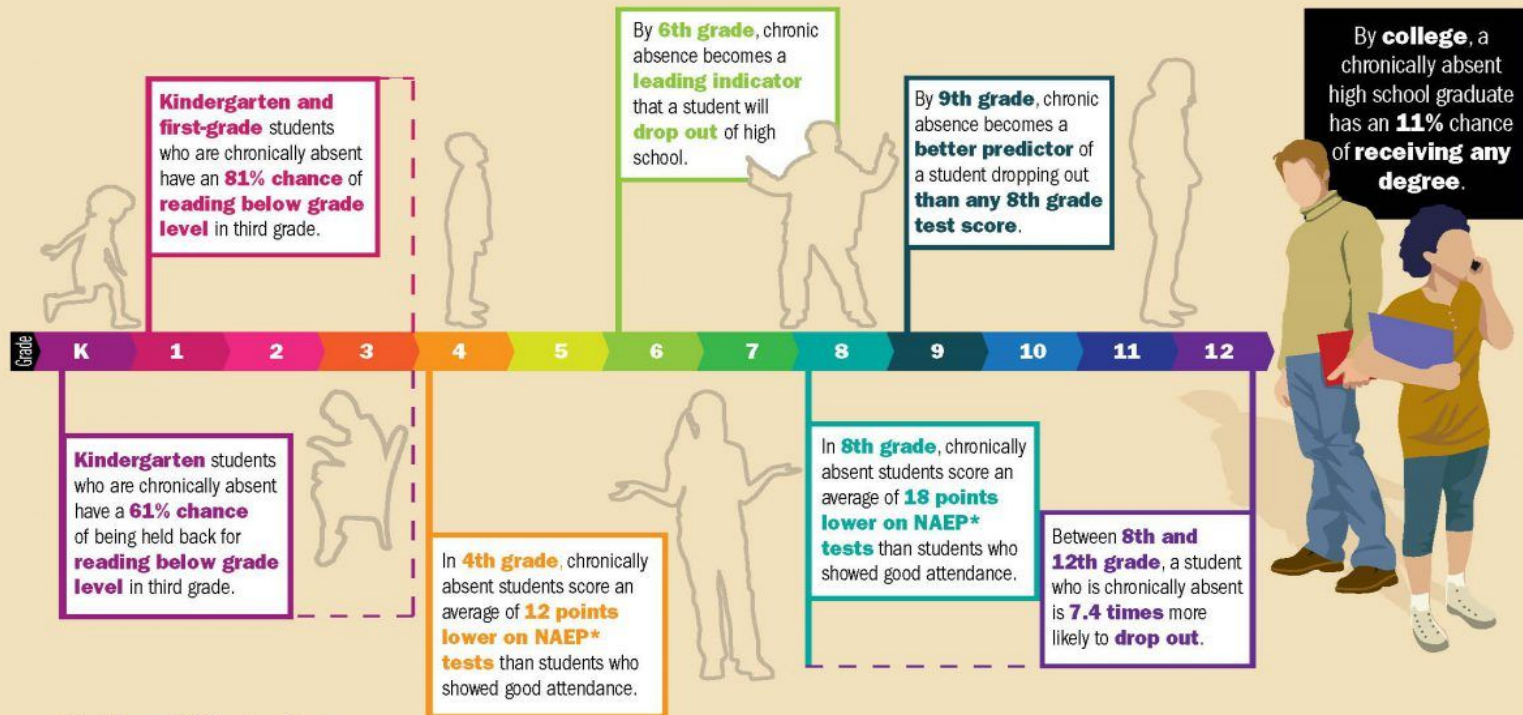
There are an estimated 5–7.5 million students in the United States who are chronically absent from school.

Chronic absenteeism hurts students in a variety of ways as they progress through their school career, starting with kindergarten.

DEFINITIONS:

Chronic Absence – Missing 2 days each month, totaling 18 days, equals 10% of the school year

Good Attendance – Missing 9 days or less in a school year (5%)



Student absences

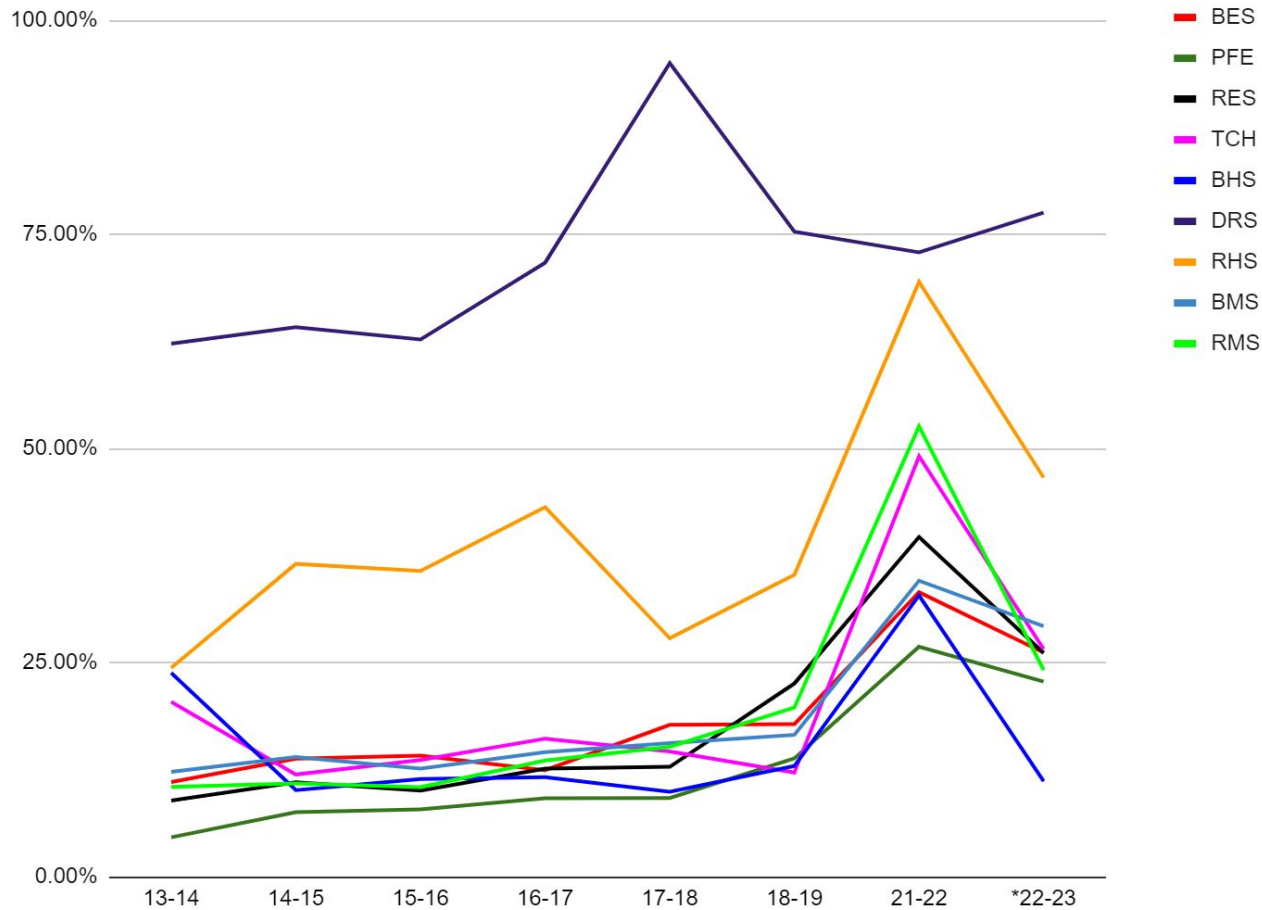
When children regularly miss school, they miss out on fundamental reading and math skills and the chance to build good attendance habits for the future.



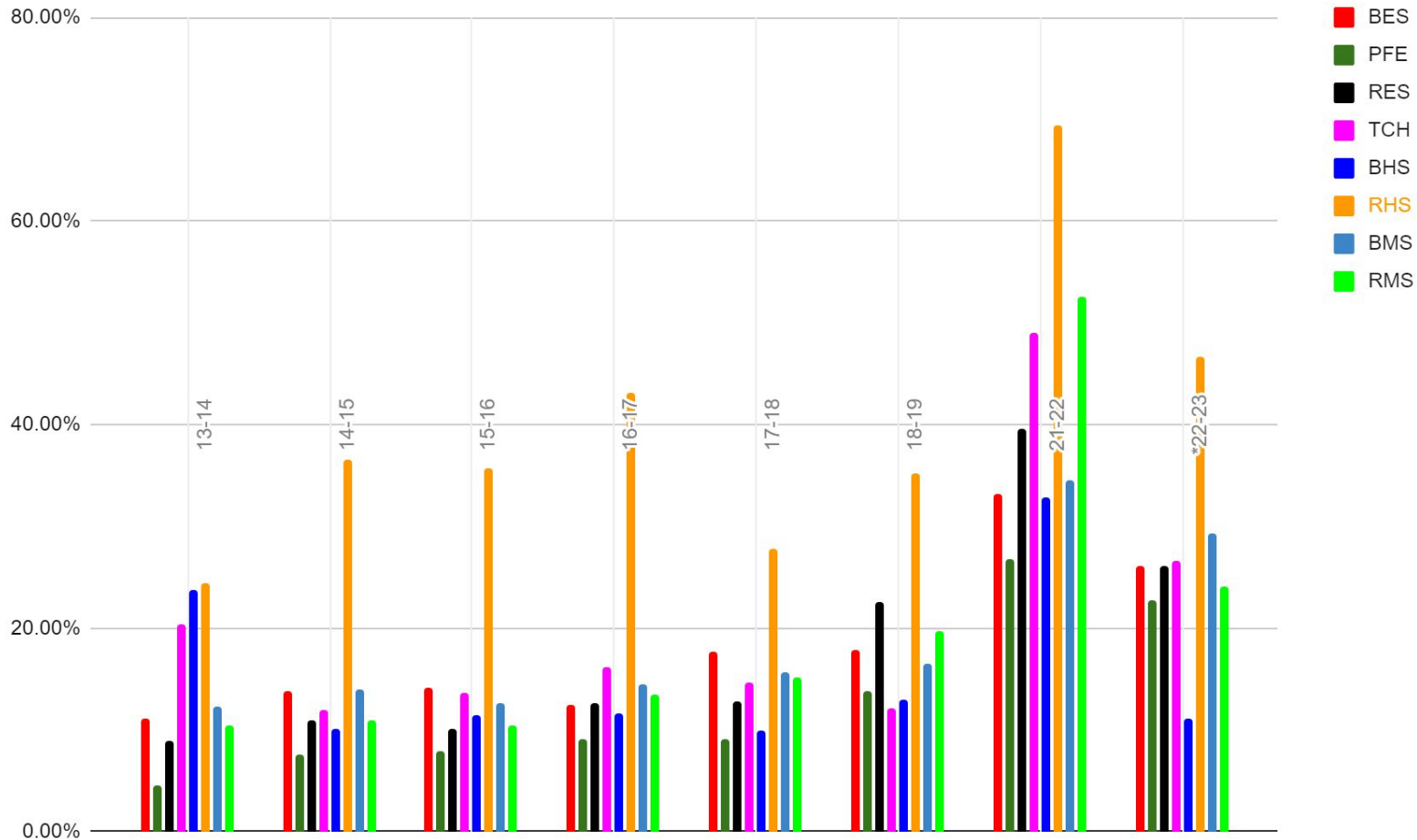
2022-23 Estimates

Transylvania County Chronic Absenteeism per School

	13-14	14-15	15-16	16-17	17-18	18-19	21-22	*22-23
BES	11.04%	13.78%	14.13%	12.42%	17.71%	17.81%	33.21%	26.16%
PFE	4.59%	7.52%	7.85%	9.15%	9.17%	13.80%	26.83%	22.76%
RES	8.88%	11.02%	10.03%	12.61%	12.82%	22.55%	39.64%	26.10%
TCH	20.41%	11.92%	13.61%	16.11%	14.61%	12.14%	49.07%	26.56%
BHS	23.79%	10.09%	11.39%	11.62%	9.91%	12.92%	32.83%	11.13%
DRS	62.24%	64.14%	62.73%	71.68%	95.00%	75.30%	72.90%	77.53%
RHS	24.38%	36.51%	35.68%	43.14%	27.84%	35.25%	69.44%	46.59%
BMS	12.22%	13.96%	12.62%	14.53%	15.58%	16.54%	34.54%	29.23%
RMS	10.46%	10.88%	10.45%	13.55%	15.16%	19.73%	52.59%	24.12%
<i>*Based on PMR 9</i>								



% Change 2021-22 to 2022-23	
BES	-21.23%
PFE	-15.17%
RES	-34.16%
TCH	-45.87%
BHS	-66.10%
DRS	6.35%
RHS	-32.91%
BMS	-15.37%
RMS	-54.14%
TCS	-30.95%



In conjunction with the MTSS model, the student attendance and engagement process also uses a tiered approach when addressing chronic absenteeism and truancy concerns.

Chronic absenteeism (CA)—Missing 10% or more of school days for any reason, excused or unexcused—detracts from learning and is a proven early warning sign of academic risk and school dropout. Per state law, school officials must also investigate **truancy**, any situation whereby a child, age 7-16, has accumulated 10 unexcused absences in a single school year.

Tiered Interventions: Student Attendance and Engagement

TIER 3: INTENSIVE

-Refer CA/Truant cases to attendance review board and/or wraparound services.
-On-going contact with student and family.

- Monitor attendance plan, adjust if necessary
- Make contact with non-compliant students/families
- Home visit if no response
- Principal or attendance committee makes recommendation for corrective action(s)
- Intensive case management with coordination of public agency and legal response as needed

TIER 2: TARGETED

-Notify parents and students of the consequences of poor school attendance.
-Provide personalized early outreach.
-Allow students and parent/guardian opportunities to provide feedback about attendance barriers.
-Develop a plan to improve attendance and share with student and parent/guardian.

- Two-way conversation with parent/guardian about attendance
- Provide questionnaires for feedback about attendance barriers
- Establish and implement attendance plan with a timeline and goals

TIER 1: UNIVERSAL

-Educate families about the importance of attendance, school attendance expectations, and district and school procedures for absences.
-Recognize good and improved attendance for individuals and groups.
-Monitor school attendance data regularly to measure individual and group progress.
-Offer a high-quality education and establish a positive and engaging school climate.
-Engage community resources to address the problems contributing to chronic absence.

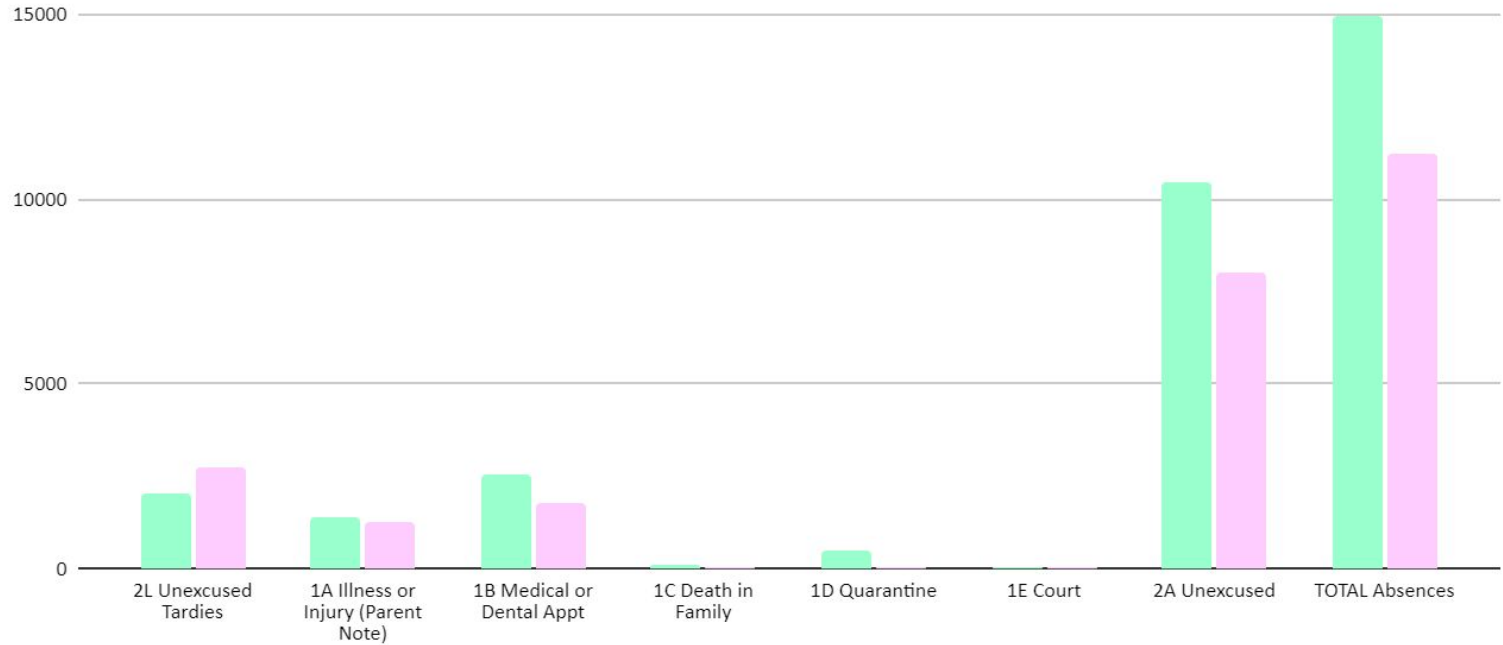
- School Messenger calls/texts/emails for initial absence threshold (example: 3 total)
- Letter for unexcused absence thresholds: at 3, 5 and 10 (certified)
- Personal calls from teachers/school staff

BHS Interventions

- 3 Total Absences = School Messenger after 3 absences (phone, text, and email- student's and parent's email)
- 5 Total Absences = Individual student meetings to review policy, sign acknowledgment, call parent to discuss (speaker phone), and mail copy home. Student "barriers to attendance" feedback.
- ≥ 9 Total Absences = Refer to Attendance Review Committee

	Fall 22	Spring 23	Total
Tier 1	587	488	1075
Tier 2	143	99	242
Tier 3	172	128	300

BHS 22-23	2L Unexc. Tardy	1A Parent Note	1B Medical or Dental	1C Death in Family	1D Quarantine	1E Court	2A Unexcused	TOTAL Absences
Fall	2022	1357	2568	74	504	23	10459	14985
Spring	2734	1274	1802	56	32	19	8033	11216
% Change	35.21%	-6.12%	-29.83%	-24.32%	-93.65%	-17.39%	-23.20%	-25.15%



2023-24 Outlook

- Tardies - 75% and accountability
- Policy in clear format
- Daily absence phone calls - one message
- Parent Portal/School Messenger
- Collaboration with DA's office and SROs
- Make-up work
- Parent Notes for up to 10 days per year