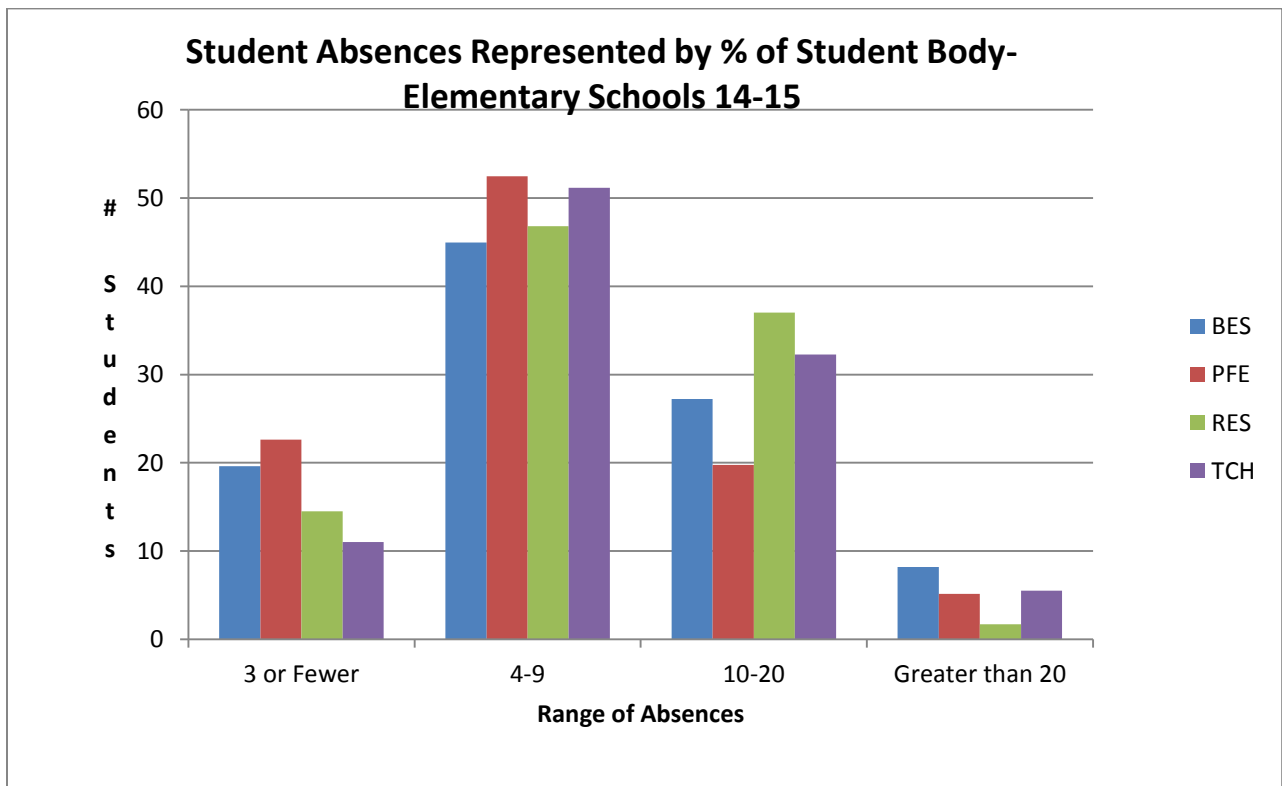
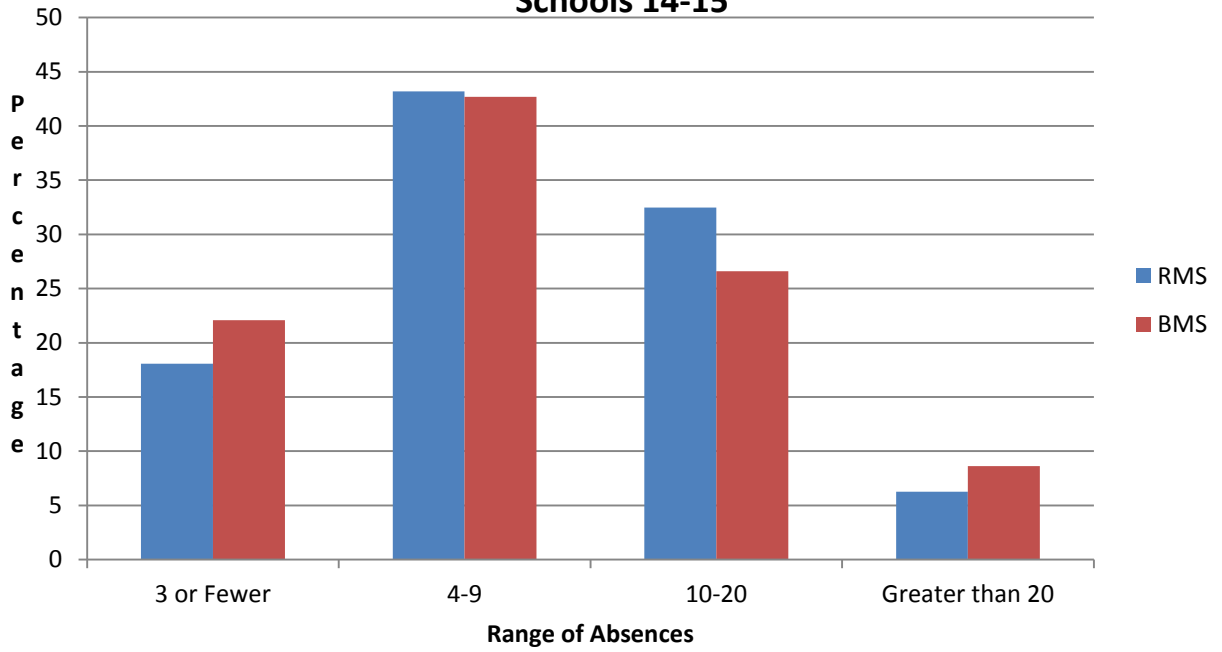


Attendance Summary 2014-2015

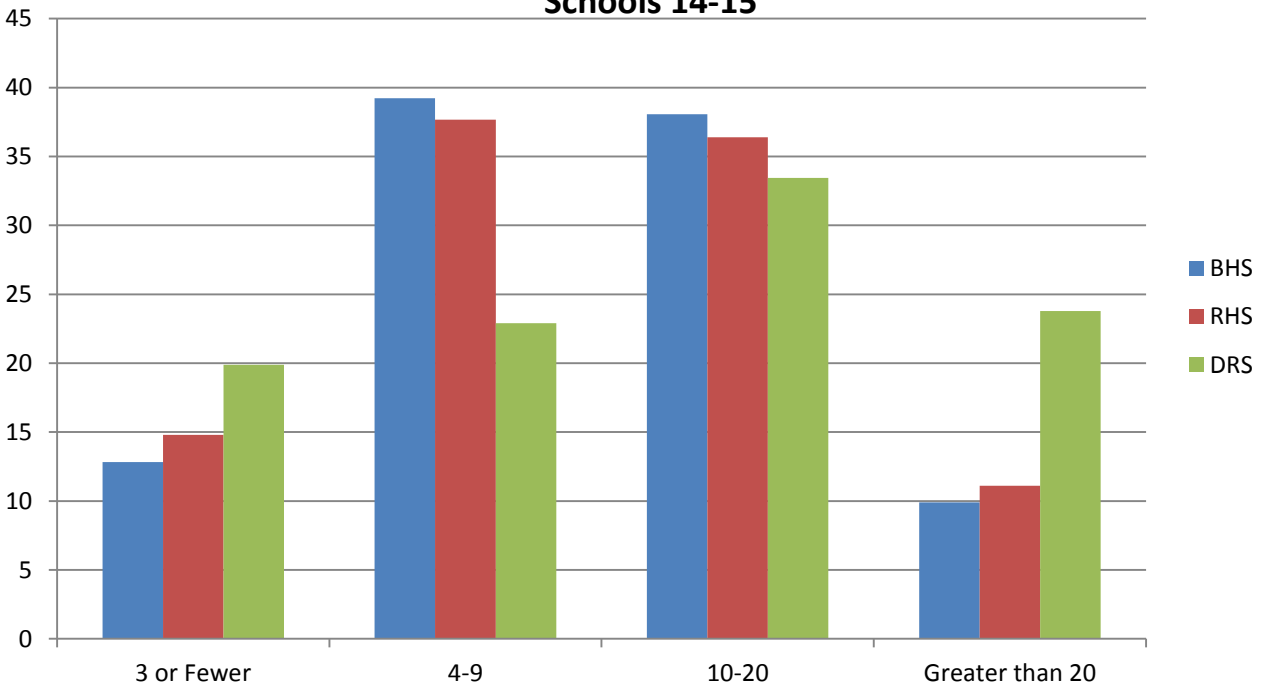
- In the recent past, the average State attendance has been 95%. TCS has a projected attendance rate of 95.9% for the 2014-2015 school year.
- Elementary and Middle Schools record their attendance by daily attendance. A student is not marked absent if they were in attendance for half the school day.
- High Schools record their attendance by period/block attendance.
- Data to track: Unlawful vs. Lawful absences, Retentions due to excessive absences, outcome for compulsory attendance charges.



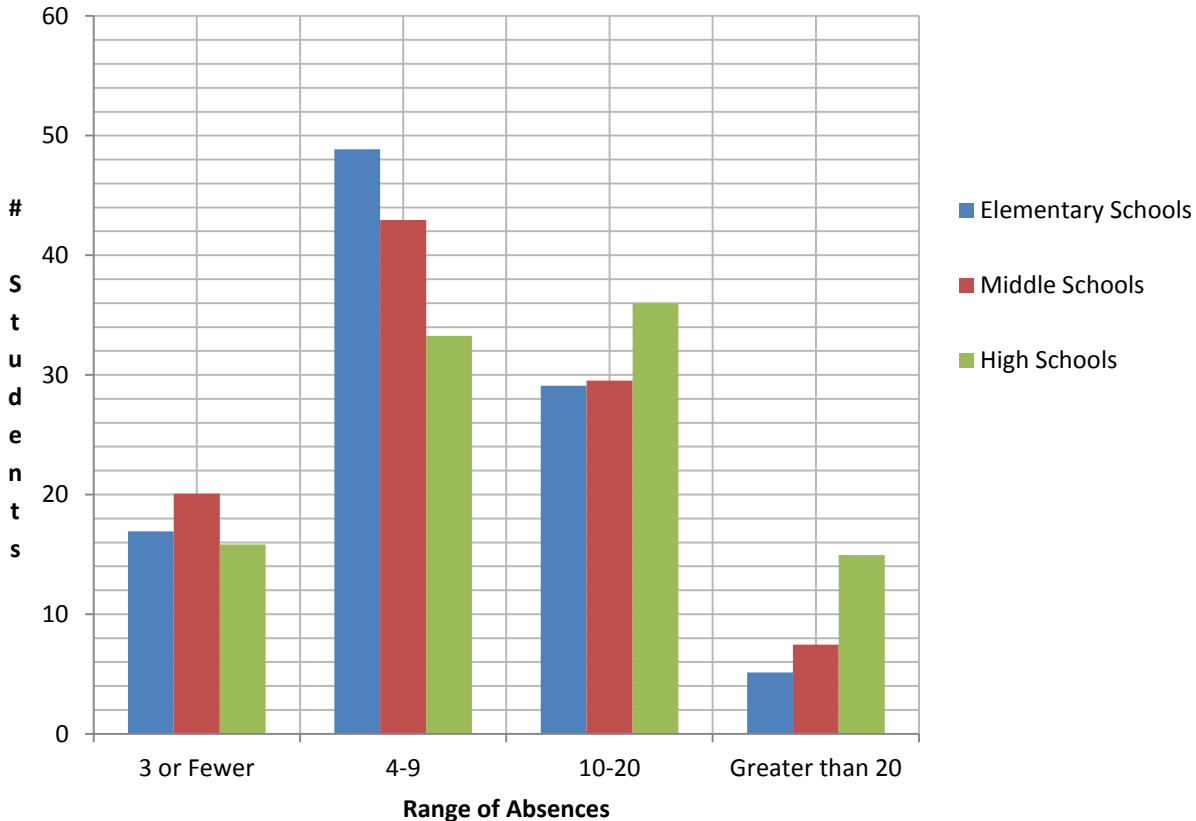
Student Absences Represented by % of Student Body- Middle Schools 14-15



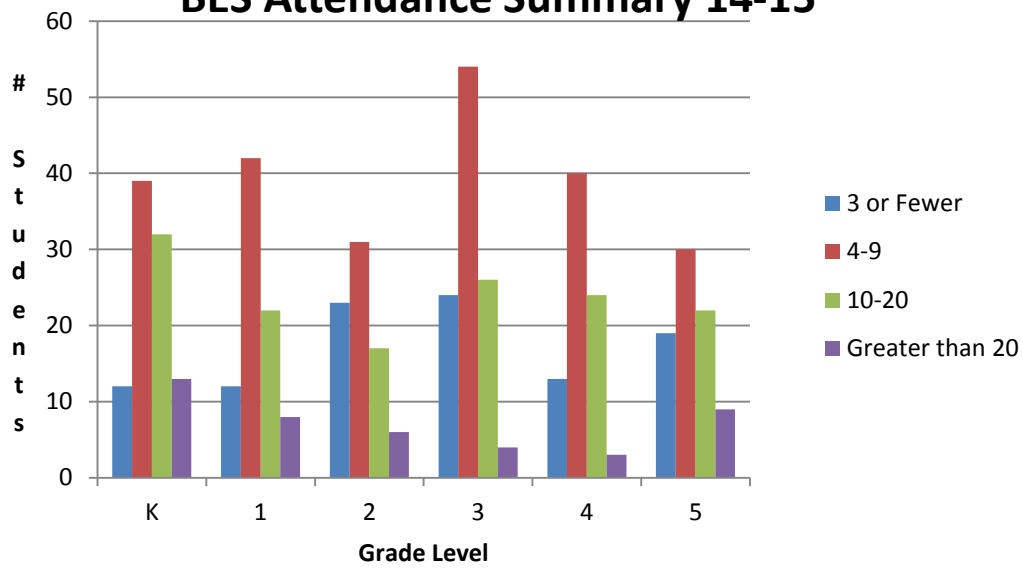
Student Absences Represented by % of Student Body- High Schools 14-15



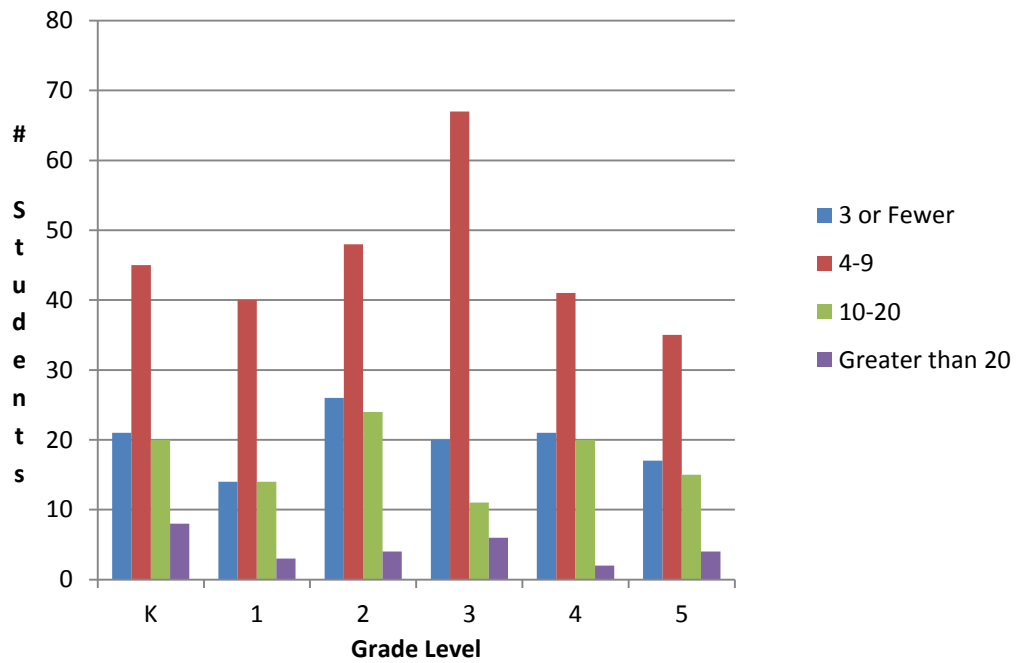
TCS Attendance Summary 14-15



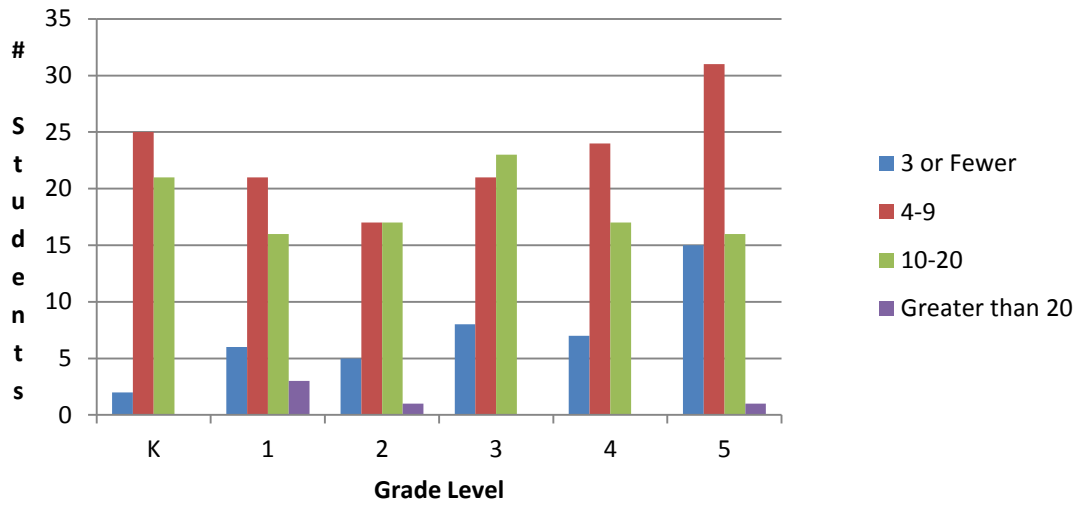
BES Attendance Summary 14-15



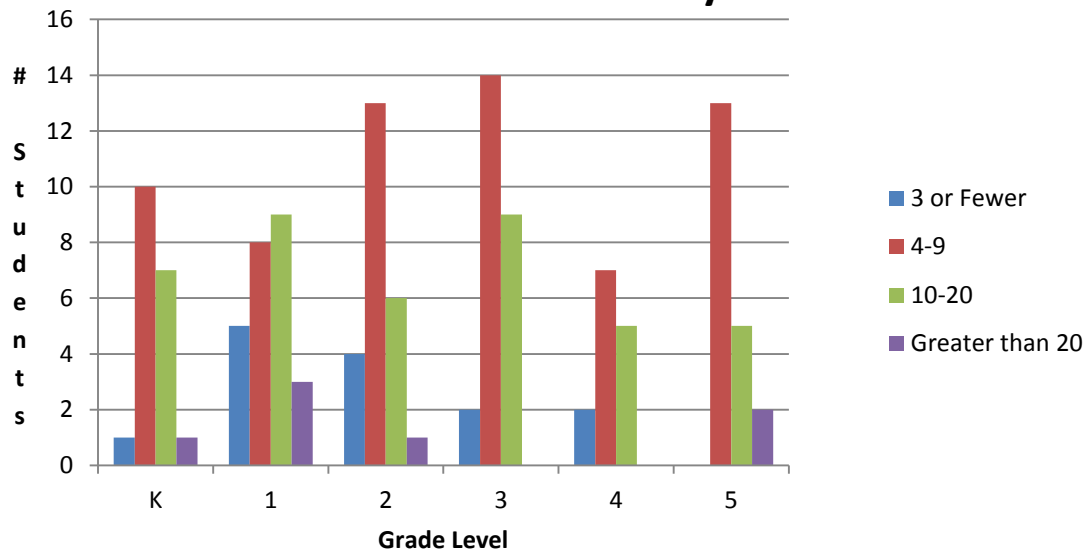
PFE Attendance Summary 14-15



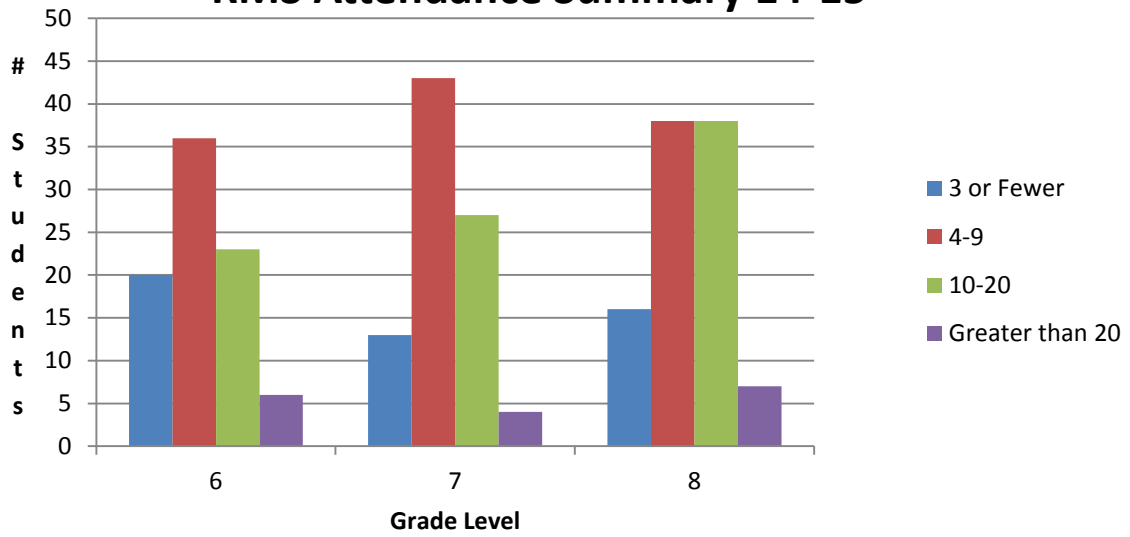
RES Attendance Summary 14-15



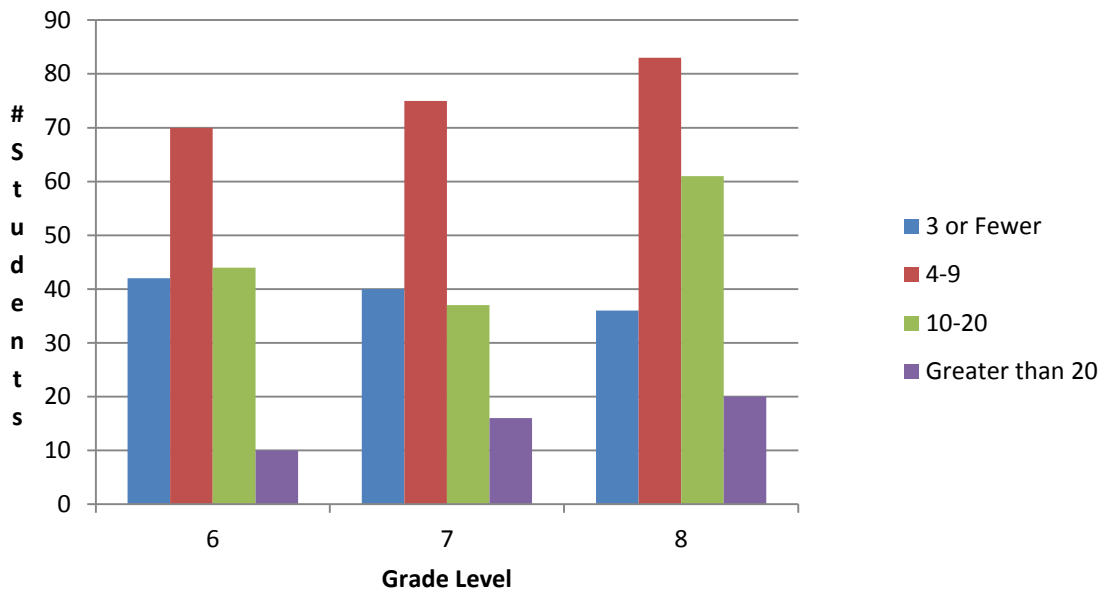
TCH Attendance Summary 14-15

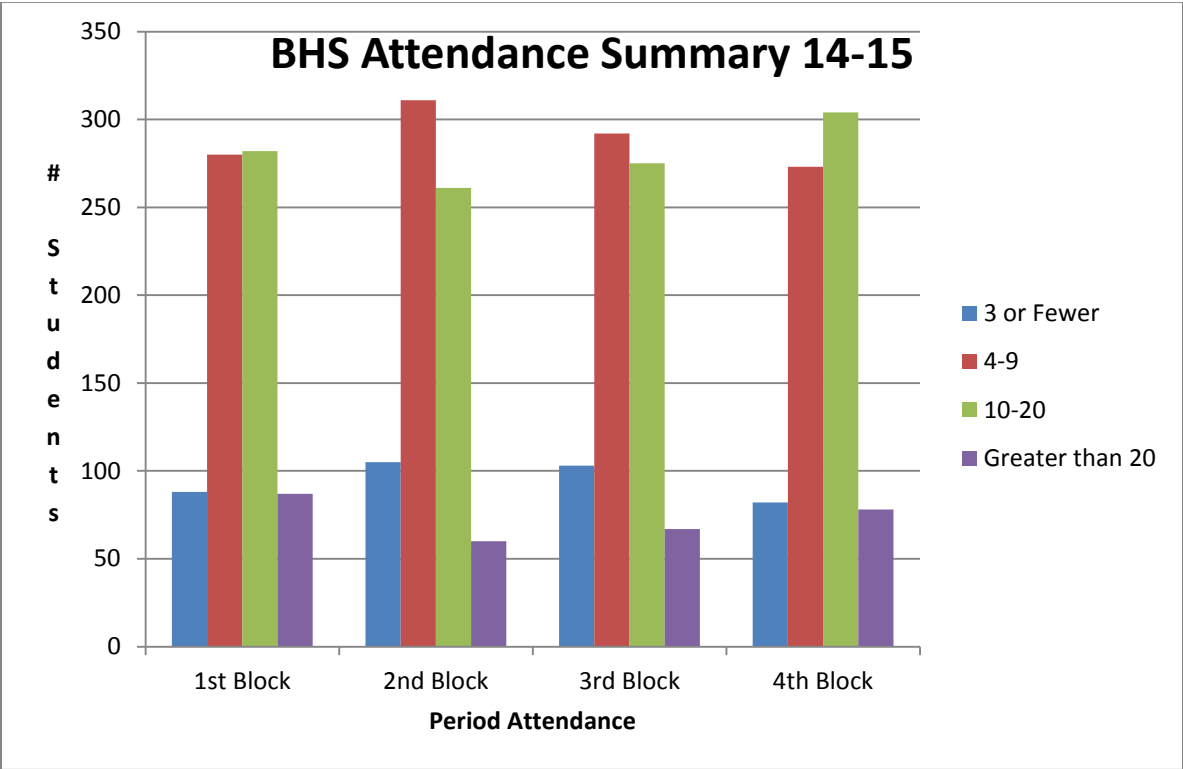
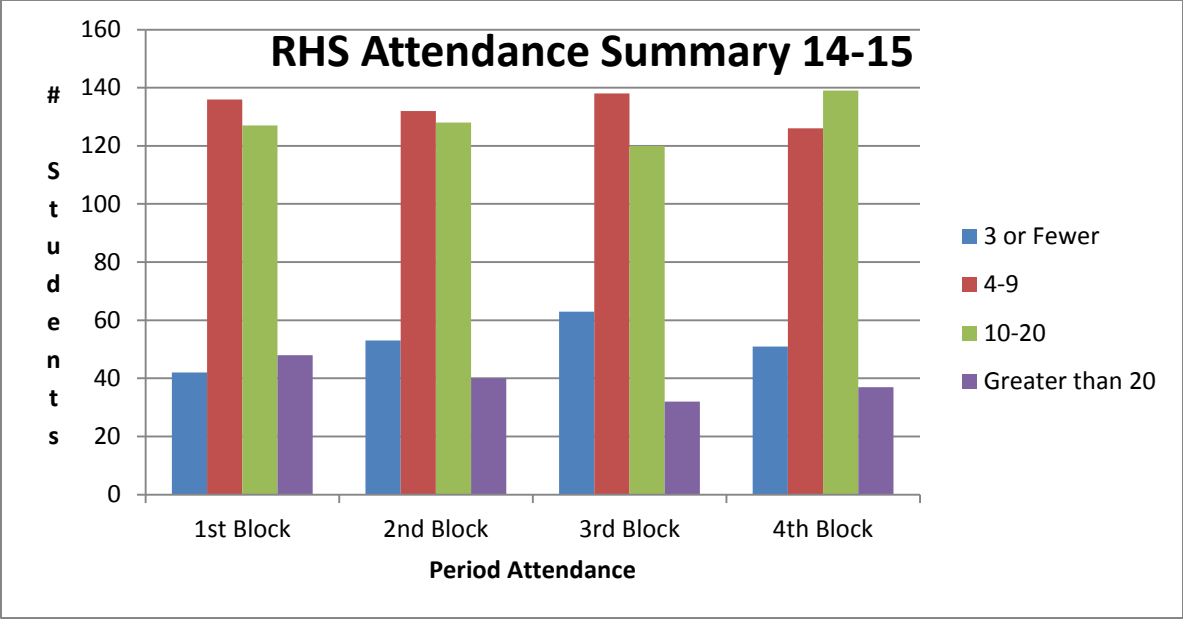


RMS Attendance Summary 14-15



BMS Attendance Summary 14-15





DRS Attendance Summary 14-15

