

Statement of Qualifications

Architectural Services

Transylvania County Schools

NOVEMBER 1, 2017





contents

<i>Transmittal Letter</i>	--
Tab 1: Description of the Firm.....	1
Tab 2: Organization Chart.....	3
Tab 3: Narrative / Criteria for Selection.....	4
<i>Design Philosophy and Approach</i>	
<i>Design Experience with Similar Projects</i>	
<i>Qualifications of Individuals Assigned to Project</i>	
<i>Processes that Engage the Board and Stakeholders</i>	
<i>Partnerships with Educational Planning Firms</i>	
<i>Commitment to Energy Efficient/Healthy Building Plan</i>	
Tab 4: Relevant Experience.....	30



October 31, 2017
Norris Berger
Director of Business Services
Transylvania County Schools
225 Rosenwald Lane
Brevard, NC 28712

RE: Architectural Design Services

Dear Norris:

We appreciate the opportunity to provide our Statement of Qualifications for Architectural Design Services related to the Transylvania County Schools' Master Facilities Plan. Since the founding of our firm in 1981, we have focused on the planning, design and construction of school facilities. Over the past 36 years, we have been entrusted with projects in forty-four different North Carolina Public School Systems across thirty-six different counties from Clay County to Dare County.

Our work with Transylvania County Schools in the late 1980's and 1990's was a major milestone in the foundation of our firm. At this time, we worked with the District to merge Penrose and Straus Elementary Schools into one school, Pisgah Forest. These improvements were, at this time, considered "state of the art." We especially enjoyed and continue to be proud of our past collaborations, which extend to nearly every school in Transylvania County.

Since this time, we've continued to refine our signature practices and procedures. And now, more than ever before, we approach each new project with the wider community in mind. We engage with the District, your students and neighbors to better understand how the Boomerang Design team can provide a design solution custom tailored to your community needs and wants. To this end, we focus on how programs and operations will inform the design; we determine how we can maintain school safety and operations during construction; and we employ time-tested strategies that allow us to deliver exceptional results while respecting your resources (like the schedule and budget). In recent years, this interactive approach has led to the successful completion of more than 205 addition, renovation and expansion projects for Pre-K through 12th grade clients in North Carolina.

We are drawn to this work because of our depth of experience with similar addition and renovation projects, and because of our history with Transylvania County Schools. We recognize how these proposed facility improvements mark a significant milestone in the life of Transylvania County Schools, and we would value the opportunity to work with the District to advance your master facilities plan.

Sincerely,

Boomerang DESIGN

Robert B. Johnson, Jr, AIA
rjohnson@thinkboomerang.com

704-731-7002

Description of the Firm

AREAS OF ARCHITECTURAL SPECIALIZATION AND FIRM HISTORY



In 1981, the world didn't know it needed another architecture firm, but our founder did. Our firm grew and after more than thirty-six years, can be counted as one of the reasons the entire region looks like it looks and is what it is. We are now well into our "next generation" and we have changed our name from MBAJ to Boomerang Design. Not just because "M" and "B" have retired, and not just because there is only a one in twenty-four chance of getting the acronym right, but because of what boomerangs symbolize to us. We believe that when we do it right, clients – like boomerangs – return.

Our team provides facility planning and architectural design services to clients who desire exceptional results. We excel in renovations and additions to existing sites and new facilities on undeveloped properties. And our services include pre-funding planning, facilities assessments, programming, master-planning, phased construction administration, interior design and post-occupancy evaluation.

OFFICE LOCATIONS

Location of Home Office

201 S Washington St, Ste 200
Shelby, NC 28150

Location of Branch Offices

1230 W Morehead St, Ste 214
Charlotte, NC 28208

6131 Falls of Neuse Rd, Ste 204
Raleigh, NC 27609

1070 S Lake Dr, Ste J
Lexington, SC 29073

PRINCIPAL OFFICERS

O. Stanhope Anthony, III, AIA
Robert B. Johnson, Jr., AIA
G. Richard Brown, AIA
Angela Crawford Easterday
James S. Golightly, II, AIA

CONSULTANTS

McGill Associates, P.A. (Asheville, NC)
Civil, Mechanical, Electrical Engineering

Ruggles Engineering PC (Catawba, NC)
Structural Engineering

Foodesign Associates, Inc. (Charlotte, NC)
Food Services

Cost Plus (Clemson, SC)
Cost Estimating

Description of the Firm

HONORS AND AWARDS



We believe Boomerang's record of past performance can be best expressed in one number, that 85% of our work comes from repeat clients. So what does this mean exactly? Well for Transylvania County Schools, it translates to a depth of experience in public education. Boomerang has collaborated with public clients in 74 of North Carolina's 100 Counties. We are proud of this work...both the finished product and the impact it has on student productivity and well-being. But here at Boomerang, we are also proud of the process, because no matter how compelling the design solution, we need to meet program expectations, complete the project on time, and do so within the allocated budget. So how do we go about measuring our performance? **By exceeding industry standards and surpassing our clients expectations.** So take a look at this select summary of our projects that have received special recognition:

Statesville High School Improvements Iredell-Statesville Schools, NC

*Stratton Publishing & Marketing Inc.,
and the NSBA, Learning by Design –
Outstanding Project*

Central Academy of Technology and Arts, Union County Public Schools, NC

*American Schools and Universities
Architectural Portfolio - recognized for
Educational Design Excellence*

First Flight High School Dare County Schools, NC

*CEFPI (A4LE) – Southeast Regional
Design Award for Best Middle School
Construction Design*

NSBA – Exhibit of Architecture

Cape Hatteras Elementary School Dare County Schools, NC

*American Schools and Universities –
Architectural Portfolio recognized for
Educational Design Excellence*

Castle Heights Middle School Rock Hill School District, SC

NSBA – Exhibit of Architecture

Dutchman Creek Middle School Rock Hill School District, SC

*CEFPI (A4LE) – Southeast Regional
Design Award for Best Middle School
Construction Design*

Organization Chart

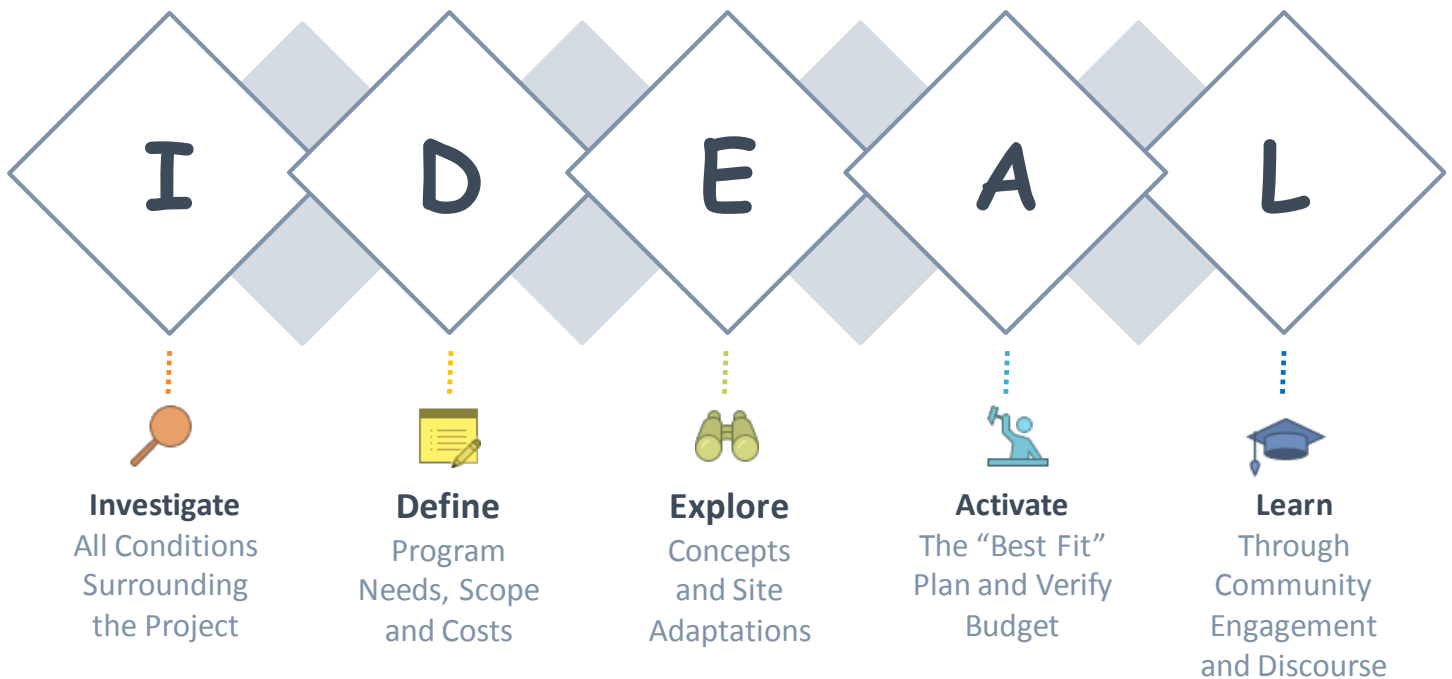


ADDITIONAL CAPACITY AVAILABLE TO SUPPORT MULTIPLE, SIMULTANEOUS PROJECTS

O. Stanhope Anthony, III, AIA, Green Associate; Phil Warren, Larry Hubbard
boomerang DESIGN

Narrative / Criteria for Selection

DESIGN PHILOSOPHY AND APPROACH TO DESIGN IN GENERAL.



We believe the key to any successful planning, programming, and design process lies in our ability to engage with our clients, understand their goals and values, and synthesize those elements into planning for the built environment. To do all of this, we employ a methodical approach consisting of five “IDEAL” steps, or phases, that involve the following elements:

INVESTIGATIONS AND DISCOVERY. This initial phase is an opportunity for us to become re-engaged with Transylvania County Schools in an effort to gain a more thorough understanding of your current mission and culture. The methodology of the discovery process involves a combination of face-to-face meetings and operational observation. As part of our comprehensive investigations, we meet with your staff, collect quantitative and qualitative data about your operations and discuss, in depth, your short-term needs and long-term goals for your proposed facility improvements.

At our client’s discretion, our team can also organize and conduct a series of facilitated interviews and focus groups to receive input from your leadership, administration, students and the wider school community about their expectations, perceptions and vision for the future of your projects.

DEFINE PROBLEM AND PROGRAM. Upon completion of the initial Investigations and Discovery phase, we document our findings and define a design strategy in a detailed “Strategy of Scope” document that will serve as a strategic blueprint for any facility improvements. The scope will include overall goals and objectives and model program guidelines and details for your facilities. This work will be done collaboratively with the School’s designated leadership to review and identify optimization and deficiencies of existing space use and identify new future space needs.

Narrative / Criteria for Selection

DESIGN PHILOSOPHY AND APPROACH TO DESIGN IN GENERAL.



EXPLORATION OF ALTERNATIVES. The insight, the program and the data collected in the initial stages will form the basis for our exploration of alternative concepts. During this phase we present Transylvania County Schools with several alternative approaches to the design of your school improvements. Each alternative approach will be provided with an evaluation of the potential positive and negative impacts of that approach. These alternative approaches will be reviewed with the School. The Comments from this review will be used to refine one of the concepts or to develop a hybrid concept for further refinement. Typically, this exploration process requires two to three rounds of discussions with associated revisions to establish a clear design direction.

ACTIVATE. Upon determining a clear conceptual direction and incorporating refinements as needed, we begin the design development process. We'll assess the impact of a particular choice and a set of decisions that are part of that choice (engineering, materials science, budget, flowchart).

With approval, we finalize the design and prepare Construction Documents. These are then submitted to building code and regulatory agencies for review. We view the local and state permitting agencies within the region as important members of the project team and engage with them as early in the planning, design and construction process as possible in order to minimize delays in the review process.

Upon design completion, Boomerang will review the final plans with Transylvania County Schools and obtains final approval for bidding.



We will work with the owner through the bidding process to ensure the selection of the best possible contractor, anticipating that upon project award, the successful bidder will essentially become a part of the Boomerang Team. We will ensure that the project is advertised and promotes contractor participation in the bidding process. We are particularly emphatic about ensuring local contractors, sub-contractors, suppliers and vendors are aware of the project and will provide a quote for the work.

During the construction period, our Construction Administrator visits the site and remains on call at all times. The Construction Administrator serves as Boomerang's point-of-contact for clarity of communication.

Upon completion of all punch list items, receipt of operation and maintenance manuals, and submission of as-built and contract closeout documents, Boomerang will certify (on behalf of the owner) the final payment to the contractor. We have long established proven procedures which are diligently respected to ensure proper project closeout.

LEARN. We believe that creative excellence depends on continuous feedback. We will conduct post-occupancy evaluations at the 10-11 months of occupancy. This allows us to solicit feedback from you, the client. It also presents us with an opportunity to review any outstanding work items that may need to be brought to the GC's attention. In fact, with our I-D-E-A-L planning and design approach, the Boomerang Team remains involved throughout programming, design, construction, and even after occupancy. We facilitate a continuous feedback loop that serves to keep the School and community informed of the project's progress and ensures that the design team and the client remain on the same page throughout the life of the project.

Narrative / Criteria for Selection

PRIOR DESIGN EXPERIENCE WITH PROJECTS OF SIMILAR SCALE AND COMPLEXITY **AND** PRIOR EXPERIENCE WITH PUBLIC SECTOR CLIENTS AND PROCESSES FOR PROJECTS OF A SIMILAR SCALE AND COMPLEXITY.



A summary of our experience successfully delivering addition and renovations for North Carolina public school clients includes:

ALLEGHANY COUNTY SCHOOLS, SPARTA

- Alleghany High School – Addition and Renovations
- Glade Creek Elementary School – Addition and Renovations
- Piney Creek Elementary School – Addition and Renovations
- Sparta Elementary School – Addition and Renovations

BURKE COUNTY PUBLIC SCHOOLS, MORGANTON

- East Burke High School – Addition and Renovations
- Freedom High School – Addition and Renovations

CABARRUS COUNTY SCHOOLS, CONCORD

- Central Office – Renovations
- A.T. Allen Elementary School – Addition and Renovations
- Charles E. Boger Elementary School – Classroom Addition
- Central Cabarrus High School – Addition and Renovations
- Concord High School – Addition and Renovations
- Carl A. Furr Elementary School – Classroom Addition
- Northwest Cabarrus High School – Addition and Renovations
- Royal Oaks Elementary School – Addition and Renovations

CALDWELL COUNTY SCHOOLS, LENOIR

- Air Conditioning – Nine Campuses
- Energy Conservation – Seventeen Campuses
- Davenport Elementary School – New Physical Education Building
- Dudley Shoals Elementary School – Addition and Renovations ►
- Gamewell Middle School – Four-Classroom Addition

- Granite Falls Middle School – Media Center Addition
- Hibriten High School
 - *School and Community-Use Theater Complex – Addition*
 - *Four-Classroom Addition*
- William Lenoir Middle School – Four-Classroom Addition
- Saw Mills Elementary School – New Physical Education Building
- South Caldwell and West Caldwell High Schools – New Athletic Track
- West Lenoir Elementary School – New Physical Education Building

CHARLOTTE-MECKLENBURG SCHOOLS, CHARLOTTE

- Albemarle Road Middle School – Addition and Renovations
- Alexander Graham Middle School – Addition and Renovations
- East Mecklenburg High School – Addition and Renovations
- Eastway Middle School – Addition and Renovations
- Huntersville Elementary School – Addition and Renovations
- Long Creek Elementary School – Addition and Renovations
- Myers Park High School – Addition and Renovations
- North Mecklenburg High School – Addition and Renovations
- Ranson Junior High School – Addition and Renovations
- Walter G. Byers Elementary School – Renovation and Classroom Conversions and Upfits

CLEVELAND COUNTY SCHOOLS, SHELBY

- Burns Junior High School – Locker Room Addition
- Burns Senior High School – Addition and Renovations ►

Belton-Honea Path Middle / High School

- Crest Senior High School – Addition and Renovations
- Casar Elementary School – Physical Activity Building Renovation
- Crest Junior High School – Locker Room Addition
- Elizabeth Elementary School
- *Physical Activity Building and Classroom Addition*
- Lattimore Elementary School – Physical Activity Building and Media Center Addition
- Township #3 Elementary School – Addition and Renovations
- Washington Elementary School – Renovations

DARE COUNTY SCHOOLS, NAGS HEAD

- Cape Hatteras Secondary School – Addition and Renovations
- First Flight Middle School – Science Classroom Addition
- Kitty Hawk Elementary School – Addition and Renovations
- Manteo Elementary School – Addition and Renovations
- Manteo High School – Addition and Renovations

DAVIDSON COUNTY SCHOOLS, LEXINGTON

- East Davidson High School – Addition and Renovations
- Fairgrove Elementary School – Addition and Renovations
- Ledford Middle School – Addition and Renovations
- Northwest Elementary School – Addition and Renovations
- The Children's Center – Addition and Renovations
- Tyro Middle School – Addition and Renovations
- Wallburg Elementary School – Addition and Renovations

ELKIN CITY SCHOOLS, ELKIN

- Elkin High School – Addition and Renovations

FORT BRAGG SCHOOLS, FORT BRAGG

- Butner Elementary School
- *New Primary Classroom Wing*
- *Existing Building Renovations*
- Holbrook Elementary School
- *New Primary Classrooms*
- *New Multipurpose Room*
- *Media Center Renovations*
- Mcnair Elementary School
- *New Kindergarten and Preschool Classrooms*
- *Media Center Expansion*
- *Existing Facility Renovations*
- Murray Elementary School
- *New Kindergarten Classrooms*
- *Existing Facility Renovations* ►



Belton-Honea Path High School was originally built in 1966 as a replacement school for the Belton High School and the Honea Path High School. The schools were further consolidated when Geer Gant High School merged with BHP, increasing enrollment to approximately 1,000 students. Periodic renovations and additions have been made to accommodate the student population growth.

In 2011, Boomerang was contracted by Anderson School District Two to complete various additions and renovations at both BHP High School and the neighboring Honea Path Middle School.

The project consisted of a new 12,000 SF Field House. Renovations were also made to the site to accommodate event and overflow parking and a new bus loop.

A new 13,000+ SF Cafeteria was added with renovations to the existing cafeteria at the BHP High School Campus. Additionally, renovations to administrative spaces and a 3,400 SF locker room addition was made to the local Honea Path Middle School. The complete project was phased through seven specific schedules to accommodate the school calendar.

Narrative / Criteria for Selection

PRIOR DESIGN EXPERIENCE WITH PROJECTS OF SIMILAR SCALE AND COMPLEXITY **AND** PRIOR EXPERIENCE WITH PUBLIC SECTOR CLIENTS AND PROCESSES FOR PROJECTS OF A SIMILAR SCALE AND COMPLEXITY.

FORT BRAGG SCHOOLS, FORT BRAGG (CONT.)

- Pope Elementary School
 - *New Kindergarten and Preschool Classrooms*
 - *New Multipurpose Room*

FRANKLIN COUNTY SCHOOLS, LOUISBURG

- Bunn Elementary School – Additions and Renovations
- Bunn High School – Additions and Renovations
- Cedar Creek Middle School
 - *New Soccer Field*
 - *New Multipurpose Field*
- Early College High School – New Modular Building (Joint Venture with Vance-Granville Community College)
- Edward Best Elementary School – Addition and Renovations
- Franklinton Elementary School – Addition and Renovations
- Franklinton Middle School – Renovations
- Franklinton High School – Additions and Renovations
- Laurel Mill Elementary School – Additions and Renovations
- Louisburg High School – Additions and Renovations
 - *Mills Building Renovations*
 - *Old Main Building Renovations*
 - *New Athletics Complex*
- Roof Repair and Replacement at Two Schools
- Royal Elementary School – Addition and Renovations
- Terrell Lane Middle School
 - *HVAC System Replacement*
 - *Floor Replacement*
 - *Classroom Addition*
 - *New Soccer Field*
 - *Multipurpose Field and Access Improvements*
- Youngsville Elementary School – Additions and Renovations

GASTON COUNTY SCHOOLS, GASTONIA

- Belmont Middle School – Addition and Renovations
- Bessemer City High School
 - *Additions and Renovations (Multiple Phases)*
 - *New Field House*
- Bessemer City Middle School – Addition and Renovations
- Carr Elementary School – Additions and Renovations
- Catawba Heights Elementary School – Addition and Renovations
- Chapel Grove Elementary School – Addition and Renovations
- Chavis Middle School – Renovations
- Cherryville East Elementary School – Addition and Renovations
- Cherryville High School – Renovations
- Cherryville Middle School – Addition and Renovations
- Costner Elementary School – Addition and Renovations ▶

- Cramerton Middle School – New
- Forest Heights Elementary School – Renovations
- Highland School of Technology – Addition and Renovations
- Holbrook Middle School – Addition and Renovations
- John Chavis Middle School – Addition
- Kiser Elementary School – Addition and Renovations
- Lingerfeldt Elementary School – Addition and Renovations
- Mount Holly Junior High School – Addition and Renovations
- New Hope Elementary School – Additions and Renovations
- North Belmont Elementary School – Addition and Renovations
- North Gaston High School – Addition and Renovations
- Rankin Elementary School – Addition and Renovations
- Rhyne Elementary School – Addition and Renovations
- Robinson Elementary School – Addition and Renovations
- South Point High School – Carpentry Lab
- Stanley Middle School – Renovations
- Tryon Elementary School – Additions and Renovations
- W. A. Bess Elementary School – Addition and Renovations

GRANVILLE COUNTY PUBLIC SCHOOLS, STEM

- Granville Central High School – Addition and Renovations

HENDERSON COUNTY PUBLIC SCHOOLS, HENDERSONVILLE

- East Henderson High School – Addition and Renovations
- Mills River Elementary School – Addition and Renovations

IREDELL-STATESVILLE SCHOOLS, STATESVILLE

- Brawley Middle School – Sixth-Grade Building Addition
 - *Classroom Addition*
- North Iredell High School – Addition and Renovations
- North Iredell Middle School – Addition and Renovations
- South Iredell High School – Freshman Academy Addition
- Statesville High School – Additions and Renovations
- Troutman Middle School – Addition and Renovations

KANNAPOLIS CITY SCHOOLS, KANNAPOLIS

- A.L. Brown High School
 - *New Biotechnology/STEM Academy (LEED® Silver)*
 - *Vocational Building Renovations*

KINGS MOUNTAIN DISTRICT SCHOOLS, KINGS MOUNTAIN

- Kings Mountain Junior High School
 - *Eight-Classroom Addition*
 - *Existing Building Renovations*
- Kings Mountain Senior High School – Additions and Renovations



PROJECT SPOTLIGHT

Granville Central High School Improvements

Granville Central High School was originally constructed as a school for future expansion. In 2013, the district selected Boomerang Design to work with the Board of Education and the school administrators to design and construct 65,000 square feet of additions and 10,000 square feet of renovations affected by the new additions.

During design **Boomerang presented several 3-D rendering options for the new additions to assist Granville County Schools** in selecting the exterior design that best complimented the existing building so that the additions appear to have been constructed when the original building was built.

The additions included a new Auxiliary Gymnasium located adjacent to the main gymnasium with locker rooms for PE, a new weight room, football coach offices and a football locker room with showers.

A new Instrumental Music Suite was designed to include a new band room, music library, office, ensemble room, and storage rooms for instruments, marching band, and percussion.

The largest addition to the building is a 25,000 square foot Career and Technical Education wing, which includes a new campus entrance and STEM labs, classrooms and storage to support PLTW, Engineering Design, Horticulture, Agriculture Technician, and Animal Sciences, as well as a Virtual Enterprise Lab. The addition also includes a new greenhouse.

Renovations include turning the space formerly used as a weight room into a fine arts classroom with storage, turning the former fine arts area into a new Guidance Suite, expansion of the dining room, and renovations to classrooms.

Narrative / Criteria for Selection

PRIOR DESIGN EXPERIENCE WITH PROJECTS OF SIMILAR SCALE AND COMPLEXITY **AND** PRIOR EXPERIENCE WITH PUBLIC SECTOR CLIENTS AND PROCESSES FOR PROJECTS OF A SIMILAR SCALE AND COMPLEXITY.

LEXINGTON CITY SCHOOLS, LEXINGTON

- Lexington Middle School – Interior Renovations
- Southwestern Elementary School – Classroom Building Addition

LINCOLN COUNTY SCHOOLS, LINCOLN

- Asbury Academy – Addition and Renovations
- Bus Garage – Addition

MADISON COUNTY SCHOOLS, MARSHALL

- Hot Springs Elementary School – Addition and Renovations

MARTIN COUNTY SCHOOLS, WILLIAMSTON

- E. J. Hayes Elementary School – Media Center Addition
- Rodgers Elementary School – Media Center Addition

MITCHELL COUNTY SCHOOLS, BAKERSVILLE

- District-Wide Facility Assessment
- Bowman Middle School – Renovations
- Gouge Elementary School – New Exceptional Children’s Suite

MOORESVILLE GRADED SCHOOL DISTRICT, MOORESVILLE

- Mooresville High School – Addition and Renovations
- N. F. Woods Technology and Arts School – Additions and Renovations
- Park View Elementary School – Addition and Renovations
- South Elementary School – Addition and Renovations

ROWAN-SALISBURY SCHOOL SYSTEM, SALISBURY

- Bostian Elementary School – Addition and Renovations
- China Grove Elementary School – Addition and Renovations
- China Grove Middle School – Addition and Renovations
- Cleveland Elementary School – Addition and Renovations
- Corriher-Lipe Middle School – Addition and Renovations
- East Rowan High School – Addition and Renovations
- Enochville Elementary School – Addition and Renovations
- Granite Quarry Elementary School – Addition and Renovations
- Hurley Elementary School – Addition and Renovations
- North Rowan High School – Addition and Renovations
- C. T. Overton Elementary School – Parking Lot
- Rockwell Elementary School – Addition and Renovations
- South Rowan High School – Addition and Renovations
- Salisbury High School – Addition and Renovations
- West Rowan High School – Addition and Renovations
- Woodleaf Elementary School – Addition and Renovations

SCOTLAND COUNTY SCHOOLS, LAURINBURG

- Scotland High School – Roof Replacement

SHELBY CITY SCHOOLS, SHELBY

- Burns Junior High School – Locker Room Addition
- Crest Junior High School – Locker Room Addition
- Marion Elementary School – Addition and Renovations
- Shelby Middle School – Renovations

STANLY COUNTY SCHOOLS, ALBEMARLE

- Albemarle High School – Addition and Renovations
- Aquadale Elementary School – Addition and Renovations
- East Albemarle Elementary School – Addition and Renovations
- Locust Elementary School – Addition and Renovations

STOKES COUNTY SCHOOLS, DANBURY

- Chestnut Grove Middle School – Addition and Renovations
- South Stokes High School – New Auxiliary Gymnasium

THOMASVILLE CITY SCHOOLS, THOMASVILLE

- Thomasville Alternative School – Old Downtown Building Renovation
- Thomasville High School
 - Addition and Renovations
 - Shop Renovations
 - Window Replacement
- Thomasville Primary School – Addition and Renovations

TRANSYLVANIA COUNTY SCHOOLS, BREVARD

- County-Wide Facility Assessment
- Brevard Elementary School – Five-classroom Addition
- Brevard High School – Additions and Renovations
- Brevard Middle School – Additions and Renovations
- T. C. Henderson Elementary School – Additions and Renovations
- Pisgah Forest Elementary School – Merging Penrose and Straus Elementary Schools
- Rosman Elementary School – Additions and Renovations
- Rosman High School – Additions and Renovations

UNION COUNTY PUBLIC SCHOOLS, MONROE

- Benton Heights Elementary School – Addition and Renovations
- Central Academy of Technology and Arts – Addition and Renovations
- East Elementary School – Addition and Renovations
- East Union Middle School – Addition and Renovations
- Fairview Elementary School – Addition and Renovations
- Forest Hills High School – Addition and Renovations
- Hemby Bridge Elementary School – Addition and Renovations
- Indian Trail Elementary School – Addition and Renovations
- Marshville Elementary School – Addition and Renovations
- Media and Technology Center – Renovations
- Monroe Middle School – Addition and Renovations

Locust Elementary School Improvements

Locust Elementary School, a historic kindergarten through eighth-grade school in Stanly County, was originally built in 1929 and had some minor renovations in the 1950s. There was major need for additions and renovations to bring this school up to current standards. To maintain the historical view of the building, the 1970s wing was demolished to allow the exterior of the 1929 building to once again be visible from the highway.

The existing gym, cafeteria, administration, and kindergarten/first-grade wings were replaced and the original demolished. These areas were too small and could not easily be renovated for current and future needs. The two-story portion of the new building houses four kindergarten/first-grade classrooms and six middle school classrooms.

The portion of the building that remained (7,500 square feet) received new finishes and casework in the classrooms. The old media center was converted into a science classroom and resource rooms.

Site work included new staff, visitor and bus parking lots.

- Monroe High School – Addition and Renovations ▶
- New Salem Elementary School – Addition and Renovations
- Parkwood High School – Addition and Renovations
- Parkwood Middle School – Addition and Renovations
- Piedmont High School – Addition and Renovations
- Piedmont Middle School – Addition and Renovations
- Professional Development Center – Addition and Renovations
- Prospect Elementary School – Addition and Renovations
- Sardis Elementary School – Classroom Addition
- Shiloh Elementary School – Classroom Addition
- Sun Valley High School – Addition and Renovations
- Sun Valley Middle School – Addition and Renovations
- Union County Career Center – Addition and Renovations
- Union Elementary School – Addition and Renovations
- Unionville Elementary School – Addition and Renovations
- Walter Bickett Elementary School – Addition and Renovations
- Waxhaw Elementary School – Classroom Addition
- Weddington Elementary and Middle School – Classroom Addition
- Wesley Chapel Elementary School – Addition and Renovations
- Western Union Elementary School – Addition and Renovations
- Wingate Elementary School – Addition and Renovations
- Wolfe Development Center – Addition and Renovations

WAKE COUNTY PUBLIC SCHOOL SYSTEM, RALEIGH

- Baucom Elementary School – Addition and Renovations
- Wendell Elementary School – Gymnasium Renovations

WATAUGA COUNTY SCHOOLS, BOONE

- Bethel Elementary School – Addition and Renovations
- Blowing Rock School – Addition and Renovations
- Hardin Park Elementary School – Addition and Renovations

WHITEVILLE CITY SCHOOLS, WHITEVILLE

- Central Middle School – Additions and Renovations
- Whiteville Alternative School – Addition and Renovations
- Whiteville Elementary School – New Administrative Building
- Whiteville High School – Additions and Renovations

A Community Based Project Approach

Boomerang Design utilizes a team based approach from the conception to the completion of our projects. We carefully select team members who have a history of working together and who will bring complementary skill sets and compatible chemistry centered on the project project-at-hand. This means that our project solutions reflect the values of our client and align with their mission. This approach is creative, collaborative, and interactive. We view each project as an element of the larger context in which it is being constructed and craft a design solution that best supports the operational needs and complements the aesthetic character of the project's location.

Prior to the commencement of a project, Boomerang Design places prime importance on assembling our select Project Team. Under the leadership of the Boomerang Principal-In-Charge, this Project Team remains involved throughout the project design and construction process. This team approach ensures the continuity of the project is maintained and the needs and desires of the collaborative team are successfully achieved.



Narrative / Criteria for Selection

PROFESSIONAL QUALIFICATIONS OF INDIVIDUALS ASSIGNED TO THE PROJECT.



Robert B. Johnson, Jr., AIA

Staff Position: Principal

Roles and Responsibilities: Principal-In-Charge

Years of Service: 39 Years Experience | 28 Years at Boomerang Design

Rob is a Principal at Boomerang Design with 39 years of experience. He is especially skilled at leading our education clients on comprehensive master planning and design efforts that advance their mission by creating hands-on, project-based, and innovative learning environments. A summary of his select experience includes:

PROJECTS OF A SIMILAR NATURE

- Transylvania County Schools, Brevard, NC
 - > Pisgah Forest Elementary School – New
 - > Brevard Middle School – Addition and Renovations
 - > Brevard High School – Addition and Renovations
 - > Rosman High School – Addition and Renovations
 - > T.C. Henderson Elementary School – Addition and Renovations
 - > Pisgah Elementary School – Merging Penrose and Straus Elementary School
- Avery County Schools, Newland, NC
 - > Freedom Trail Elementary School – New
 - > Crossnore Elementary School – New
 - > Cranberry Middle School – New
- Henderson County Public Schools, Hendersonville, NC
 - > Clear Creek Elementary School – New
 - > Fletcher Elementary School – New
 - > Glenn Marlow Elementary School – New
 - > Sugarloaf Elementary School – New
 - > East Henderson High School – Addition and Renovations
- Charlotte-Mecklenburg Schools, Charlotte, NC
 - > Myers Park High School – Additions/Renovations
 - > Alexander Graham Middle School - Additions and Renovations

PROFESSIONAL LICENSE/REGISTRATION

North Carolina Board of Architecture
South Carolina Board of Architecture
Virginia Board of Architecture
National Council of Architectural Registration Boards

PROFESSIONAL MEMBERSHIPS/ACTIVITIES

American Institute of Architects
American Institute of Architects - North Carolina
Board of Directors, President 2014
American Institute of Architects - Charlotte
Board of Directors, 2004 President

EDUCATION

University of Illinois at Urbana - Champaign, Master of Architecture
University of North Carolina at Charlotte, Bachelor of Arts, Architecture

Narrative / Criteria for Selection

PROFESSIONAL QUALIFICATIONS OF INDIVIDUALS ASSIGNED TO THE PROJECT.



Robert J. Buckanavage, AIA, LEED® AP BD+C

Staff Position: Associate

Roles and Responsibilities: Project Manager / Architect

Years of Service: 21 Years Experience | 15 Years at Boomerang Design

Rob has more than 15 years of experience with our firm and more than 20 years of total experience. As the Project Architect, he is responsible for the quality of the design documents and for the coordination of Boomerang's proposed design team. Rob works closely with our clients to help them realize their goals through proper management of available resources (budget, schedule and consultants included). A summary of his relevant project experience includes:

PROJECTS OF A SIMILAR NATURE

- Charlotte Mecklenburg Schools, NC
 - > Alexander Graham Middle School – Additions and Renovations
 - > Bailey Road Intersection Improvements
 - > Eastway Middle School – Additions and Renovations
 - > First Ward Elementary School – Additions and Renovations
 - > Myers Park High School – Additions/Renovations
 - > Walter G. Byers Elementary School – Classroom Upfits
- Gaston County Schools, Gastonia, NC
 - > Costner Elementary School – Addition and Renovations
- Union County Public Schools, Monroe, NC
 - > Monroe Middle School Additions and Renovations
 - > Professional Development Center – Addition and Renovations
 - > Union County Career Center Additions and Renovations
 - > Wolfe Development Center Additions and Renovations
- Horry County Schools, Conway, SC
 - > North Myrtle Beach Intermediate School – Addition and Renovations
 - > North Myrtle Beach Middle School – Addition and Renovations
 - > North Myrtle Beach Primary School – Addition and Renovations
 - > Socaste Elementary School – Addition and Renovations

PROFESSIONAL LICENSE/REGISTRATION

North Carolina Board of Architecture
LEED® Accredited Professional Certification

PROFESSIONAL MEMBERSHIPS/ACTIVITIES

American Institute of Architects

EDUCATION

Virginia Polytechnic Institute and State University,
Bachelor of Architecture

Narrative / Criteria for Selection

PROFESSIONAL QUALIFICATIONS OF INDIVIDUALS ASSIGNED TO THE PROJECT.



G. Richard Brown, AIA

Staff Position: Principal

Roles and Responsibilities: Computer Modeling / Visualization

Years of Service: 29 Years Experience | 25 Years at Boomerang Design

Rick is particularly talented with helping our clients visualize their project goals through the use of Building Information Modeling (BIM) and photo-realistic renderings. He will provide support to the Design Team with production of the design documents. A summary of Rick's relevant project experience includes:

PROJECTS OF A SIMILAR NATURE

- Iredell-Statesville Schools, Statesville, NC
 - > Lake Norman High School – New
 - > North Iredell Middle School – Addition
 - > Statesville High School – Addition and Renovations
- Gaston County Schools, NC
 - > New Stuart W. Cramer High School
- Mooresville Graded School District, Mooresville, NC
 - > Mooresville High School – Additions and Renovations
 - > Mooresville Intermediate School – New
- Anderson School District One, Williamston, SC
 - > Powdersville High School – New
- Rock Hill School District Three, Rock Hill, SC
 - > Castle Heights Middle School – New
 - > Dutchman Creek Middle School – New
 - > South Pointe High School – New
- Trinity Episcopal School, Charlotte, NC
 - > Multipurpose Building – New
 - > Capital Campaign Support
- Wesleyan Christian Academy, High Point, NC
 - > Programming/Master Plan/Capital Campaign Support

PROFESSIONAL LICENSE/REGISTRATION

North Carolina Board of Architecture
National Council of Architectural Registration Board

PROFESSIONAL MEMBERSHIPS/ACTIVITIES

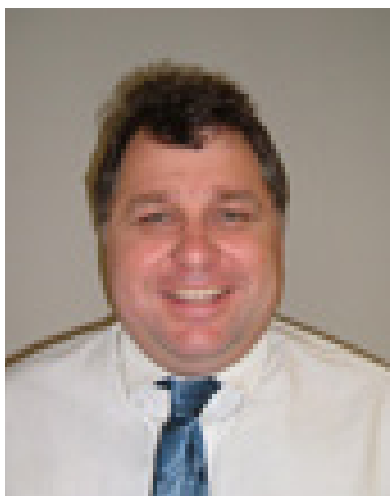
American Institute of Architects

EDUCATION

Virginia Polytechnic Institute and State University, Master of Architecture
University of North Carolina at Charlotte, Bachelor of Arts, Architecture
Land Use Planning

Narrative / Criteria for Selection

PROFESSIONAL QUALIFICATIONS OF INDIVIDUALS ASSIGNED TO THE PROJECT.



Pierre E. Henwood

Staff Position: Technical Support

Roles and Responsibilities: Design Support and Construction Administration

Years of Service: 24 Years Experience | 19 Years at Boomerang Design

Pierre has a keen ability for attention to details. He understands buildings and their systems, and how they need to go together. For this project, he will provide support to the design team with production of the design documents. He will remain a part of the project team through the entirety of the construction process, supporting the construction administrator, the principal, and the project manager.

PROJECTS OF A SIMILAR NATURE

- Brunswick County Schools, Connelly, NC
 - > East Burke Middle School - Roof Repair
- Burke County Schools, Morganton, NC
 - > Property Accounting Drawings all schools
 - > East Burke High School – Additions and Renovations
 - > East Burke Middle School – Additions and Renovations
 - > Freedom High School – Additions and Renovations
- Cleveland County Schools, Shelby, NC
 - > Elizabeth Elementary School – Additions and Renovations
 - > Marion Elementary School – Additions and Renovations
- Gaston County Schools, Gastonia, NC
 - > Bessemer City Middle School – Additions and Renovations
 - > Cherryville East Elementary School – Additions and Renovations
 - > Gaston County Schools Data Center - Renovation
- Iredell/Statesville Schools, Statesville, NC
 - > Brawley Middle School – Additions and Renovations
 - > Lake Norman High School – Classroom Addition
 - > North Iredell High School – Additions and Renovations
 - > Statesville High School – Additions and Renovations
 - > South Iredell High School – Addition and Renovations

- Mooresville Graded School District, Mooresville, NC
 - > Mooresville High School – Addition
 - > Mooresville Middle School – Additions and Renovations
 - > N.F. Woods School – Renovation
- Fairfield County School District, Winnsboro, SC
 - > Fairfield Primary School – Addition and Renovations
 - > Conversion of Old Career Center Building - Renovations
 - > Geiger Elementary School – Addition and Renovations
 - > Kelly Miller Elementary School – Addition and Renovations

EDUCATION

University of Auckland, Auckland, New Zealand
Bachelor of Architecture

Christchurch Polytechnic Institute of Technology, Christchurch, New Zealand
New Zealand Certificate of Architectural Drafting

Narrative / Criteria for Selection

PROFESSIONAL QUALIFICATIONS OF INDIVIDUALS ASSIGNED TO THE PROJECT.



Dan McRae, AIA

Staff Position: Construction Administrator

Roles and Responsibilities: Construction Administration

Years of Service: 35 Years Experience | 23 Years at Boomerang Design

Dan has 35 years of experience, which includes 23 with Boomerang Design. As the construction administrator, Dan works closely with the Project Manager to guide each project from design through construction. He performs constructability reviews throughout document preparation and once construction begins, Dan is the contractor's primary point of contact, conducting site visits, meetings and responding to contractor queries.

PROJECTS OF A SIMILAR NATURE

- Avery County Schools, Newland, NC
 - > Freedom Trail Elementary School – New
 - > Crossnore Elementary School – New
 - > Cranberry Middle School – New
- Henderson County Public Schools, Hendersonville, NC
 - > Clear Creek Elementary School – New
 - > Fletcher Elementary School – New
 - > Glenn Marlow Elementary School – New
 - > Sugarloaf Elementary School – New
 - > East Henderson High School – Addition and Renovations
- Elkin City Schools, Elkin, NC
 - > Elkin High School – Additions and Renovations
- Davidson County Schools, Lexington, NC
 - > East Davidson High School – Additions and Renovations
 - > Ledford Middle School – Additions and Renovations
 - > Northwest Elementary School – Additions and Renovations
 - > Tyro Middle School – Additions and Renovations
 - > Wallburg Elementary School – Additions and Renovations
- Charlotte-Mecklenburg Schools, Charlotte, NC
 - > Myers Park High School – Additions/Renovations
 - > Alexander Graham Middle School - Additions and Renovations

PROFESSIONAL LICENSE/REGISTRATION

North Carolina Board of Architecture

PROFESSIONAL MEMBERSHIPS/ACTIVITIES

American Institute of Architects

EDUCATION

University of North Carolina at Charlotte, Masters of Business Administration

North Carolina State University,
Bachelor of Environmental Design in Architecture

Narrative / Criteria for Selection

PROFESSIONAL QUALIFICATIONS OF INDIVIDUALS ASSIGNED TO THE PROJECT.



Teresa L. Merck, AIA, NCIDQ, LEED® AP

Staff Position: Director of Interior Design

Roles and Responsibilities: Interior Design

Years of Service: 13 Total Years | 1 Year at Boomerang Design

As a licensed architect and registered interior designer, Teresa's 'design-sense' comes from years of training and experience in interior design before moving into the field of architecture. Her background in interior design has molded her design process, which tends to move from the inside of a space outward. Teresa has a passion for 'placemaking'. The details, large or small, are what make a space and define the sense of a place. She has extensive experience leading clients and project teams through the design process to develop a place that reflects the client's goals, culture and values.

PROJECTS OF A SIMILAR NATURE

- Trinity Episcopal School, Charlotte, NC
 - > Multipurpose Building – New
 - > Capital Campaign Support
- Wake County Public School System, Raleigh, NC
 - > E-40/Rogers Lane Elementary School – New
- Gaston County Schools, Gastonia, NC
 - > Pleasant Ridge Elementary School – New
- Colliers International, Raleigh, NC
 - > 702 Oberlin Road Project
- Lexington County, SC
 - > Irmo Library – Renovation
 - > Main Library – Renovation
- Rockingham Community College, Wentworth, NC
 - > Whitcomb Student Center – Renovation

PROFESSIONAL LICENSE/REGISTRATION

North Carolina Board of Architecture
LEED® Accredited Professional Certification
NCIDQ Interior Design Certification

PROFESSIONAL MEMBERSHIPS/ACTIVITIES

Triangle Commercial Real Estate for Women

EDUCATION

North Carolina State University, Masters of Architecture
University of North Carolina at Greensboro, Bachelor of Science,
Interior Design

Narrative / Criteria for Selection

PROFESSIONAL QUALIFICATIONS OF INDIVIDUALS ASSIGNED TO THE PROJECT.



Stephen H. Wilt, AIA

Staff Position: Associate

Roles and Responsibilities: Quality Assurance and Master Specs

Years of Service: 30 Total Years | 16 Years at Boomerang Design

Steve has 30 years in the A/E industry, with 16 years with Boomerang Design. Dedicated to quality assurance, he oversees the development and production of the design and construction documents and specifications. What this means is that Steve performs the detailed check on coordination of trades and coordination between the plans and the specifications. He especially enjoys, and has extensive experience with education projects.

PROJECTS OF A SIMILAR NATURE

- Brunswick County Schools, Bolivia, NC
 - > Cedar Grove Middle School – New
 - > Town Creek Elementary School – New
- Dare County Schools, Manteo, NC
 - > Cape Hatteras Secondary School – Addition and Renovation
 - > Central Office Building – New
 - > Central Office Building Vestibule – Addition
 - > First Flight High School – New
 - > First Flight Middle School – Addition
 - > Kitty Hawk Elementary School – Addition and Renovation
 - > Manteo Elementary School – Additions and Renovation
 - > Nags Head Elementary School – New
- Franklin County Schools, Louisburg, NC
 - > Bunn High School – Addition and Renovation
 - > Franklinton High School – New
 - > Louisburg High School – Addition and Renovation
- Granville County Public Schools, Oxford, NC
 - > Granville Central High School – Addition and Renovations
- Halifax County School District, Halifax, NC
 - > District-Wide Facility Study

- Martin County Schools, Williamston, NC
 - > Williamston Middle School – New
- Wake County Public School System, Raleigh, NC
 - > H-8/South Garner High School – New
 - > E-37/White Oak Elementary School – New
 - > E-28/Poole Road Elementary School – New
 - > E-40/Rogers Lane Elementary School – New

PROFESSIONAL LICENSE/REGISTRATION

North Carolina Board of Architecture
National Council of Architectural Registration Boards

PROFESSIONAL MEMBERSHIPS/ACTIVITIES

American Institute of Architects

EDUCATION

Virginia Polytechnic Institute and State University, Bachelor of Architecture

Narrative / Criteria for Selection

PROFESSIONAL QUALIFICATIONS OF INDIVIDUALS ASSIGNED TO THE PROJECT.



Bob Wiggins, PE

Staff Position: Mechanical Engineer Manager

Roles and Responsibilities: Mechanical Engineering

Years of Service: 35 Total Years

Bob Wiggins has over 30 years of expertise in mechanical engineering. He has worked with numerous schools, universities, industrial and health care systems, including the preparation of design, specifications, studies, and reports. Bob has experience with LEED projects as well as two publications. A summary of his relevant project experience includes:

PROJECTS OF A SIMILAR NATURE

- Asheville City Schools, Asheville, NC
 - > Asheville Middle School – New
 - > Ira B. Jones Elementary School – Media Center HVAC
- Western North Carolina School for the Deaf, Morganton, NC
 - > Kitchen Plumbing – Renovation
 - > Old Gym Building – Renovation
 - > Replacement of Site Water System
- Hanger Hall School for Girls, Asheville, NC
 - > School Building– New
- Wetmore Building, Buncombe, North Carolina
 - > Wetmore Classroom Building – HVAC Renovation
- Buncombe County Schools, Asheville, NC
 - > Erwin High School – Mechanical Renovation
 - > Enka High School – Classroom Addition
 - > North Buncombe – Classroom Addition
- Gaston County Schools, Gastonia, NC
 - > 10 Mechanical Renovation Projects
 - > Starnes Auditorium – HVAC
 - > Ashebrook High School Chiller Replacement
 - > Performance Contracting Evaluations

PROFESSIONAL LICENSE/REGISTRATION

North Carolina Registered Professional Engineer
South Carolina Registered Professional Engineer
Virginia Registered Professional Engineer
Tennessee Registered Professional Engineer
New Jersey Registered Professional Engineer
AEE Certified Commissioning Agent

PROFESSIONAL MEMBERSHIPS/ACTIVITIES

American Society of Heating, Refrigerating and Air Conditioning Engineers
National Fire Protection Association
WNC Green Building Council

EDUCATION

Duke University, Master of Science in Mechanical Engineering
Duke University, Bachelor of Science in Mechanical Engineering

Narrative / Criteria for Selection

PROFESSIONAL QUALIFICATIONS OF INDIVIDUALS ASSIGNED TO THE PROJECT.



Phil Fisher, PE

Staff Position: Electrical Services Manager

Roles and Responsibilities: Electrical Engineering

Years of Service: 31 Total Years

Phil Fisher has more than 31 years of engineering design and field experience, including extensive electrical projects for schools and higher learning institutions; utility power transmission; distribution and substation systems; normal and standby (on-site generation) power; lighting; telecommunications; fire alarm; security, and control systems. He has strong conceptualization and problem-solving skills, and can quickly and efficiently develop solutions to engineering problems. A select summary of his relevant project experience includes:

PROJECTS OF A SIMILAR NATURE

- Wake County Public School System, Raleigh, NC
 - > Centennial Campus Magnet Middle School – New School
 - > Athens Drive High School – Complete Renovation
 - > Enloe High School – Additions and Renovations
 - > Fuquay Varina High School – Additions and Renovations
 - > York Elementary School – Additions and Renovations
 - > 100+ Schools – Computer Networking Upgrades
- The Covenant School, Charlottesville, VA
 - > Upper School – New School

Note: Projects were completed with previous firm.

PROFESSIONAL LICENSE/REGISTRATION

North Carolina Registered Professional Engineer
South Carolina Registered Professional Engineer
Virginia Registered Professional Engineer
Tennessee Registered Professional Engineer
Kentucky Registered Professional Engineer

EDUCATION

North Carolina State University, Bachelor of Science, Electrical Engineering
George Mason University, Project Management Education and Development Program
Auburn University, Power System Analysis
Georgia Institute of Technology, Substation Grounding and Analysis

Narrative / Criteria for Selection

PROFESSIONAL QUALIFICATIONS OF INDIVIDUALS ASSIGNED TO THE PROJECT.



Mark Cathey, PE

Staff Position: Senior Project Manager

Roles and Responsibilities: Civil Engineering

Years of Service: 21 Total Years

Mark Cathey has more than 21 years of design and management experience with a strong background in civil and environmental engineering. He has managed a substantial number of engineering projects from concept to completion – including trails and greenways, parks and recreation, roadways, sidewalks, storm drainage, utilities, solid waste, and GIS-related projects. Mark has developed a noteworthy reputation for his ability to adhere to the client’s needs and complete projects in a timely, yet efficient manner. He also has considerable experience in permitting and with projects that may involve extensive permitting.

PROJECTS OF A SIMILAR NATURE

- Buncombe County, Candler, NC
> Enka Intermediate School
- Buncombe County, Black Mountain, NC
> Owen High School Tennis Courts
- Mars Hill University, Mars Hill, NC
>North Buncombe High School Drainage Improvements Day Hall
- Mars Hill University, Mars Hill, NC
> Athletic Field House
- Mars Hill University, Mars Hill, NC
>MHU dormitories
- Asheville-Buncombe Technical Community College, Asheville, NC
> Numerous projects
- A. C. Reynolds High School, Asheville, North Carolina
> Entrance Improvements

PROFESSIONAL LICENSE/REGISTRATION

North Carolina Registered Professional Engineer
South Carolina Registered Professional Engineer
Tennessee Registered Professional Engineer

PROFESSIONAL MEMBERSHIPS/ACTIVITIES

American Water Works Association
American Public Works Association
Solid Waste Association of North America
Southeastern Stormwater Association

EDUCATION

Clemson University, Bachelor of Science in Civil Engineering

Narrative / Criteria for Selection

PROFESSIONAL QUALIFICATIONS OF INDIVIDUALS ASSIGNED TO THE PROJECT.



RUGGLES ENGINEERING PC
Structural Engineers

Randy Ruggles, PE

Staff Position: President/Owner

Roles and Responsibilities: Structural Engineering

Years of Service: 43 Total Years

As the owner and lead structural engineer and Ruggles Engineering, Randy specializes in all aspects of design, building and construction of a variety of institutional and educational projects. Mr. Ruggles is licensed to practice structural engineering in North and South Carolina and Virginia. Ruggles Engineering now complements its engineering services by conducting building investigations and providing design for special structures, renovations, retrofits, and upfits. Services range from the conceptual phase through construction, providing a structurally sound building within the client's budget and time schedule.

PROJECTS OF A SIMILAR NATURE

- Charlotte-Mecklenburg Schools, Charlotte, NC
 - > Chantilly School – New
 - > Shamrock School – New
 - > Piney Grove School – New
- Gaston County Schools, Gastonia, NC
 - > W. A. Bess Elementary School – New
 - > Stuart W. Cramer High School – New
 - > Robinson Elementary School – New
 - > John Chavis Middle School – Addition
 - > W C Friday School – Elevator Addition
 - > Costner Elementary School – Addition
- Cabarrus County Schools, Concord, NC
 - > Rocky River Middle School – New
 - > Harris Road Middle School – New
- Lincoln County, Lincolnton, NC
 - > Pumpkin Center Middle School – New

PROFESSIONAL LICENSE/REGISTRATION

North Carolina Registered Professional Engineer
South Carolina Registered Professional Engineer

PROFESSIONAL MEMBERSHIPS/ACTIVITIES

American Council of Engineering Companies
American Concrete Institute
American Institute of Steel Construction

EDUCATION

University of Illinois, Master of Architecture Coursework
University of Illinois, Bachelor of Architecture
Springfield College, Associate of Architecture

Narrative / Criteria for Selection

PROFESSIONAL QUALIFICATIONS OF INDIVIDUALS ASSIGNED TO THE PROJECT.



Russell Roark

Staff Position: President

Roles and Responsibilities: Cost Estimating

Years of Service: 25 Total Years

Russell has over twenty years of estimating a wide variety of project types including educational, medical and military facilities, religious buildings, detention centers, high-end residential and sports complexes. He leads the team at Cost Plus, where they believe that accurate and detailed project costing information is the foundation of a successful building program. They provide detailed cost estimates at each design phase and assist owners and architects in evaluating the cost of different construction materials and systems.

PROJECTS OF A SIMILAR NATURE

- Buncombe County Schools, Asheville, NC
 - > Asheville STEM Academy – Renovations
 - > Community High School – New
- Chatham County Schools, Pittsboro, NC
 - > Northwood High School – Additions and Renovations
- Yancey County Schools, Burnsville, NC
 - > Yancey County Elementary School – New
- Wake County Public School System, Raleigh, NC
 - > H8/South Garner High School – New
- Rowan-Cabarrus Community College, Salisbury, NC
 - > Buildings 600 and 300 – Additions and Renovations
- University of North Carolina at Asheville, NC
 - > NC Center for Health Promotions – New
- University of North Carolina Healthcare, Cary, NC
 - > Amberly Wellness Center – New
- University of North Carolina at Chapel Hill, NC
 - > Dean Smith Center– Expansion

- City of Greensboro, NC
 - > Southwest Greensboro Recreation Center – New
- Western Carolina University, Cullowhee, NC
 - > Western Carolina Regional Recreation Center
- Asheville Buncombe Technical Community College, Asheville, NC
 - > Elm Building – Renovations
- Augusta State University, Wrightsboro, GA
 - > Classroom Building – New

EDUCATION

Clemson University, Bachelor of Science, Building Science and Construction

Narrative / Criteria for Selection

PROFESSIONAL QUALIFICATIONS OF INDIVIDUALS ASSIGNED TO THE PROJECT.



Kris Morphis

Staff Position: Principal

Roles and Responsibilities: Food Services

Years of Service: 17 Total Years

Foodesign is a premier foodservice design agency providing superior facility design services to their clients. And their proposed project lead, Kris Morphis has over 17 years experience in the industry. As a Principal at Foodesign, Kris he has been involved in all aspects of food facilities design including planning, technical execution and site supervision. He has completed many types of projects for private, state and federal institutions as well. His responsibilities include in-house execution of the work as well as administration throughout the project.

PROJECTS OF A SIMILAR NATURE

- Charlotte-Mecklenburg Schools, Charlotte, NC
 - > Child Development Center – New
- Anderson School District Two, Honea Path, SC
 - > Belton Honea Path High School – Cafeteria Renovation
- Anderson School District One, Williamston, SC
 - > Powdersville High School – New
- Franklin County Schools, Louisburg, NC
 - > Bunn High School – New
 - > High School and Culinary – New
 - > Franklinton High School – New
- Charlotte-Mecklenburg Schools, Charlotte, NC
 - > Myers Park High School – Phased Improvements
- Wake County Public School System, Raleigh, NC
 - > South Garner High School – New
- Gaston County Schools, Gastonia, NC
 - > Stuart W. Cramer High School – New

EDUCATION

Catawba College
University of North Carolina at Charlotte
Art Institute of Charlotte

Narrative / Criteria for Selection

PROCESSES THAT CREATIVELY ENGAGE BOARD STAFF AND OTHER STAKEHOLDERS IN ALL STAGES OF THE PROJECT AND ESTIMATED TIME TO COMPLETE THE PROCESS.



Boomerang Design utilizes a team based approach from the conception to the completion of our projects. This approach is creative, collaborative, and interactive.

Prior to the commencement of a project, we place prime importance on assembling a select Project Team which also identifies key client participants. The client members of the Project Team usually consist of administrative leadership, facilities personnel, departmental representatives, and in some cases, governing board members.

From the very start of a project we work closely with the client and all members of the design team to identify a detailed scope of work for all trades. This better ensures that, at project conception, a clear budget, as well as a project schedule is defined and understood.

At the School's discretion, we will also engage the wider school community in facilitated interviews and focus groups to receive input from students, neighbors, and other stakeholders about their expectations, perceptions and vision for your proposed projects. Our client and stakeholder engagement creates a continuous feedback loop that serves to keep the school and community informed of the project's progress and ensures that the design team, the client and the community remain on the same page throughout the life of the project.

The estimated time to complete this process varies and will be defined on a project-by-project basis.

Once we've gathered all qualitative and quantitative data and solidify the scope of work, we then engage the collective team in an interactive design "Problem Solving" process to explore alternative plans which seek to best accommodate the program needs and achieve the project goals. This approach allows the client's selected participants to become an integral part in achieving the design solution. Through a series of round table workshops, we develop space needs and relationships, review alternative plans, determine a best-fit conceptual plan and craft a solidified schematic design.

At the beginning, middle, and end of each phase of work we will also conduct face-to-face meetings with all of the design team members. Client project management and maintenance teams are invited to attend these meetings to communicate critically important project issues or concerns, which will be addressed.

Under the leadership of the proposed principal, Stan Anthony, the Project Team remains involved throughout the project design and construction process. This team approach ensures the continuity of the project is maintained and the needs and desires of the collaborative team are successfully achieved.

Narrative / Criteria for Selection

PARTNERSHIPS WITH ANY EDUCATIONAL PLANNING FIRMS THAT WOULD BE USED.



Boomerang Design provides our clients with comprehensive master planning and programming services that are centered on your district, your schools and your community. We focus on understanding how each school is organized, how existing facilities are being utilized, the life span of existing facilities and systems, the campus infrastructure, site master planning, program assessment and recommendations. And after in-depth investigations we develop a comprehensive plan for moving forward with your projects.

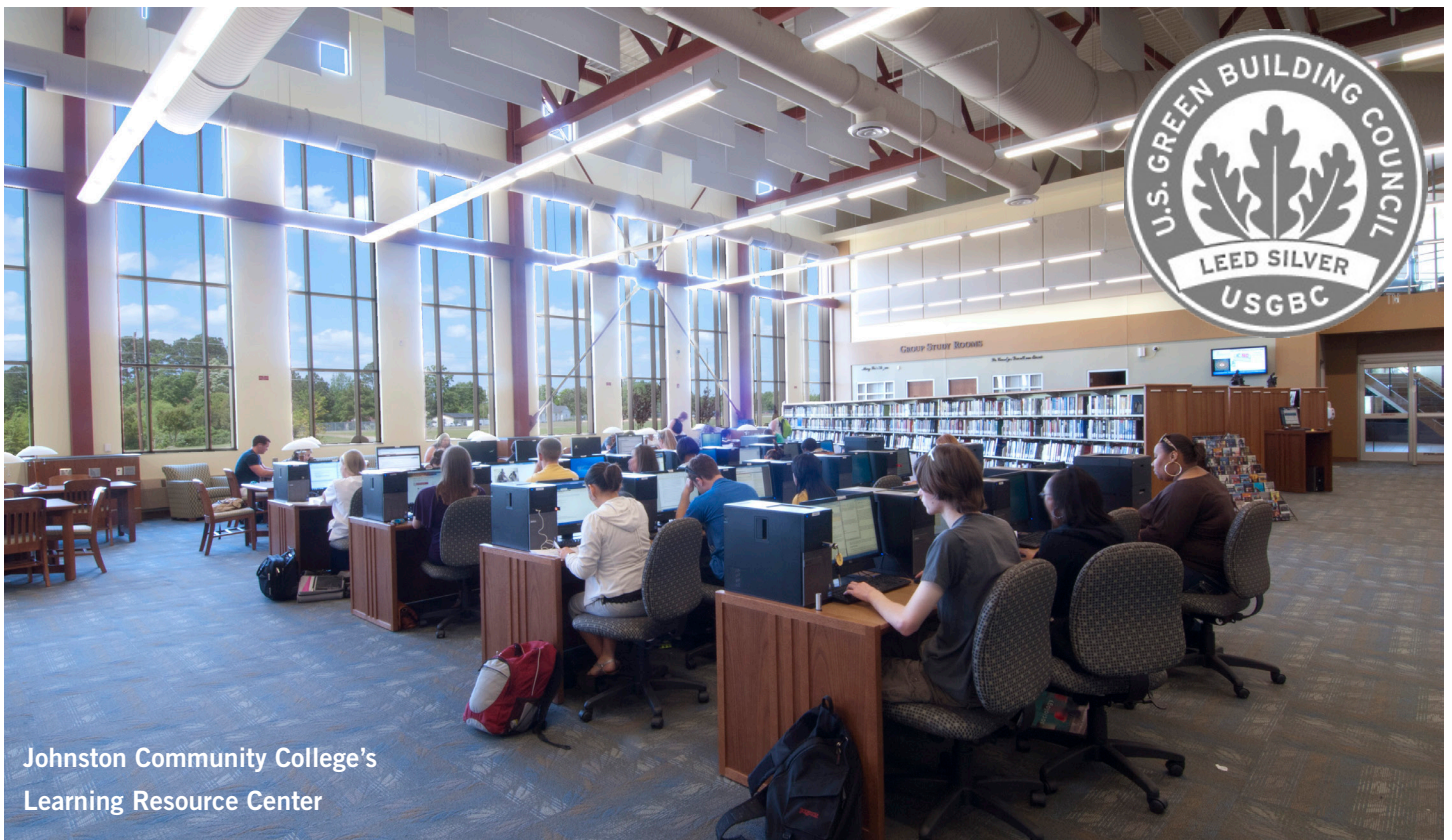
When necessary, we do team with educational planning firms. This includes award-winning planner Mike Raible with The School Solutions Group. Mike has over 25 years of experience in public education. As the Executive Director for Planning and Project Management for Charlotte-Mecklenburg Schools in North Carolina, he developed the ten year Facility Needs Assessment and demographic analysis, the Strategic Plan, and the capital funding requests. He led CMS' 2010 plan that closed ten under-used and under-performing schools and restructured more than 20 others. As a consultant, he has worked with Gaston County Schools on capital needs planning and demographics, Davidson County Schools on strategic planning, and Weldon City Schools on strategic planning.

During our educational planning process we will work with Transylvania County Schools to answer your most challenging questions, like:

- How can we educate students with today's level of technology sophistication in antiquated spaces?
- How can our spaces be flexible enough to provide program support for today and for programs we have not even thought about yet?
- How can we provide support for our faculty, both full-time and adjunct, within the limited space we have?
- Where are we headed and how can our facilities support our mission?
- What is the life expectancy of our facilities, systems, and infrastructure? How should we plan for the future with the least disruption as possible?
- What shade of green should we be?

Narrative / Criteria for Selection

COMMITMENT TO DEVELOPING AN ENERGY EFFICIENT AND HEALTHY BUILDING PLAN.



Johnston Community College's
Learning Resource Center

Boomerang Design coordinates with each client to determine the desired sustainability goals for a specific project through an eco-charette process. Based upon our expertise, we evaluate these goals and determine which are attainable and incorporate them into the project.

This process involves an evaluation of diverse energy conservation provisions on a component-by-component, project-by-project basis. Each is site and project specific and determined based on a balance between the initial cost versus the long-term operational performance and savings. We will work with Transylvania County Schools to explore the cost benefit ratio for all potential green initiatives both for construction costs now and total building life cycle.

Mechanical systems selection and controls are always extremely important to the energy efficiency of a school building. We spend a considerable amount of time with our engineers and your mechanical and project management staff to better ensure that we select the proper system and the appropriate level of controls.

In addition to the above mentioned considerations, we utilize the USGBC LEED points system to evaluate a project and make specific recommendations as to what can be done with orientation of the building, exterior envelope materials selection, selection of components and assemblies, mechanical system selection, and interior materials and finishes selection.

Relevant Experience

LIST NO MORE THAN THREE RELEVANT PROJECTS



THE NUMBERS

Project Area:

330,000 SF (Total Phased Improvements)

Cost:

Phase 1: \$2,572,800

Phase 2: \$7,100,100

Phase 3: \$9,688,259

Phase 4 & 5: \$27,400,000 (projected)

Completed:

Phase 1: 1996 Phase 2: 2002

Phase 3: 2014 Phase 4: 2016

Phase 5: 2018 (Projected)

OWNER CONTACT:

Mike Higgins

Charlotte-Mecklenburg Schools

P.O. Box 30035, Charlotte, NC 28230

980-343-6050

Myers Park High School

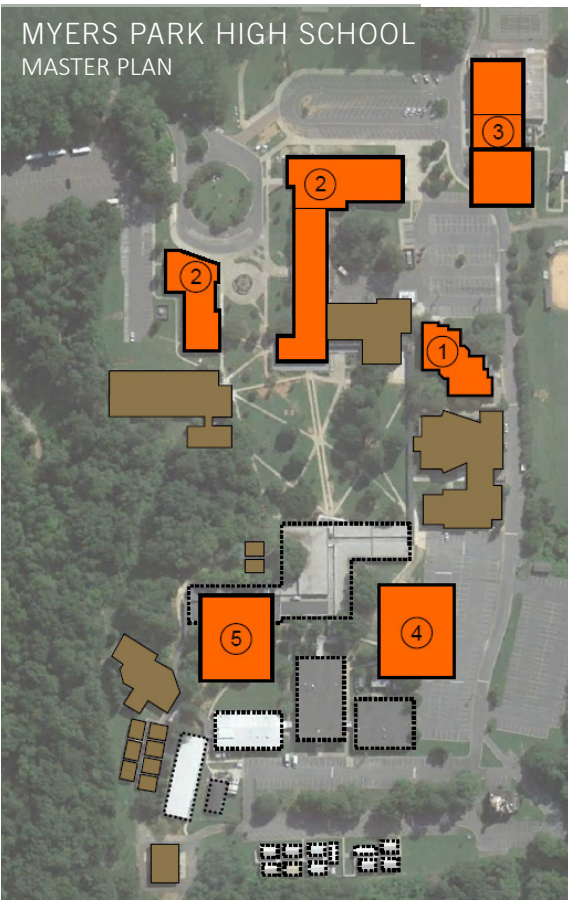
A comprehensive master plan was developed when Charlotte-Mecklenburg Schools commissioned Boomerang Design to design additions and renovations for Myers Park, a 2,800-student high school that originally opened in 1954. Construction was divided into several multi-phase programs and at final build out will include a total of over 330,000 square feet. Myers Park is a beautiful collegiate-style campus composed of 16 buildings. The primary design challenge for each phase of work was maintaining the campus aesthetic, while expanding the usable footprint.

Phase one included campus-wide window and mechanical up-fits and the construction of a two-story, 23,496 SF classroom building. The new building was sited to close off one end of an existing quad and provide additional separation between the pedestrian and vehicular traffic flow on campus.

Phase two included the construction of a science classroom building, a new administration building and the renovation of the existing gym along with technology service and life safety system improvements to 14 existing campus buildings. Boomerang resolved numerous site and building accessibility issues, completely replaced the domestic water system, added additional parking, and transformed six existing classrooms into three new science laboratories.



PHASE 1
NEW CLASSROOM BUILDING



MYERS PARK HIGH SCHOOL
MASTER PLAN



PHASE 2
NEW STUDENT CENTER AND ADMIN OFFICES



PHASE 3
NEW GYMNASIUM ADDITION (INTERIOR)



PHASE 3
NEW GYMNASIUM ADDITION (EXTERIOR)

Phase three was the design of a new competition gym, locker rooms, athletic storage and offices. The existing physical education building was also renovated and a lobby was constructed to tie the existing and new facilities together in a cohesive manner. Also involved was the renovation of the school stadium with new bleachers, a restroom and concession building.

With the most recent phases of design Boomerang provided CMS with an updated campus master plan which included the replacement of five outdated buildings with two new buildings. Combined, these new buildings will house academic, science classrooms, and CTE classrooms; staff support spaces and a new campus media center.

PHASE 4
NEW CLASSROOM & MEDIA CENTER BUILDING



MODELED AFTER A BOOKSTORE



FURNISHED FOR COMFORT



INCLUDES A "MAKER SPACE"



They have been designed to “straddle” the natural grade-change of the campus allowing easy access to the school’s programs and reducing construction costs.

Phase five, a new multi-story science classroom building is currently under construction. However, **phase four**, a multi-story classroom and media center building has since been constructed. This building stands out as an example of a modern media center that provides students with a flexible environment that facilitates learning.

THE TEAM

Structural Engineering:

Arp Engineering

M/E/P Engineering:

McKnight Smith Ward Griffin, Inc.

Civil Engineering:

Turnbull Sigmon Design
Merrick & Company

Relevant Experience

LIST NO MORE THAN THREE RELEVANT PROJECTS



THE NUMBERS

Project Area:

100,000 SF (Total Phased Improvements)

Cost:

Phase 1: \$3,006,912

Phase 2: \$874,367

Phase 3: \$5,812,709

Phase 4: \$6,950,261

Phase 5: \$1,700,000

Completed:

Phase 1: 2001 Phase 2: 2003

Phase 3: 2008 Phase 4: 2009

Phase 5: 2012

OWNER CONTACT

Mike Higgins

Charlotte-Mecklenburg Schools

P.O. Box 30035, Charlotte, NC 28230

980-343-6050

Alexander Graham Middle School

Alexander Graham Middle School was a collection of sprawling structures that had been added over time, creating problems with access and security. The new additions and renovations, completed in multiple phases over several years, touched virtually every space in the 100,000 square foot campus.

Phase 1 was renovation of the media center and the kitchen and dining room, and general campus-wide upfits. Much-needed space was added to the media stacks and reading room by absorbing adjacent space. The technology infrastructure was upgraded to better support the exchange of information and learning, and an elevator addition at the multi-story classroom wing was provided.

Phase 2 was the replacement of windows campus-wide including the removal of the original 3-story steel window wall at the classroom building, and its replacement with an energy efficient aluminum curtain-wall system with insulated glazing and panels. This dramatically upgraded the image of the overall campus, while increasing the energy efficiency of the individual buildings. This provided light, airy enclosed walkways, which streamlined access, enhanced security, and added continuity to the existing buildings.



PHASE 3
ENTRANCE/ADMIN (BEFORE)



PHASE 3
ENTRANCE/ADMIN (AFTER)



PHASE 5
GYMNASIUM (BEFORE)



PHASE 5
GYMNASIUM (AFTER)

Phase 3 was a 2-story classroom building addition and further renovations to existing classroom wings and the gym. Also included were site modifications to improve traffic flow, safety, and security, providing for the administration, which was relocated to an existing classroom wing, giving the campus a much more appropriate and secure “entry.”

Phase 4 was campus-wide HVAC replacement, upfit for accessible staff and student toilet rooms, classroom finishes, acoustics, and casework upfit. This work replaced the campus’ main boiler room equipment and campus piping and added digital controls, further enhancing the energy efficiency of the campus overall.

Phase 5 was a 2,400 sf expansion and 16,390 sf renovation of the existing gym. The overall height of the gym roof was raised by 6 feet. This phase also completed the campus wide HVAC replacement and automatic sprinkler system installation.

THE TEAM

Structural Engineering:

Chao and Associates, Inc.
Stewart Engineering

M/E/P Engineering:

Tyler Engineering
Evans Engineering, Inc.
McKnight Smith Ward Griffin, Inc.

Civil Engineering:

GeoScience Group, Inc.
Merrick & Company

Food Services:

Foodesign Associates, Inc.

Relevant Experience

LIST NO MORE THAN THREE RELEVANT PROJECTS



THE NUMBERS

Project Area:

21,839 SF (New) / 44,903 (Renos)

Cost:

\$8,564,390

Completed:

2018 (Projected)

OWNER CONTACT

Don Icenhower, Chief Operations Officer
Lexington School District Two
715 Ninth St. West Cola, SC 29169
803-739-4083

THE TEAM

Civil/Structural Engineering:

ADC Engineering, Inc.

M/E/P Engineering:

GWA, Inc.

Mechanical Design, Inc.

Food Services:

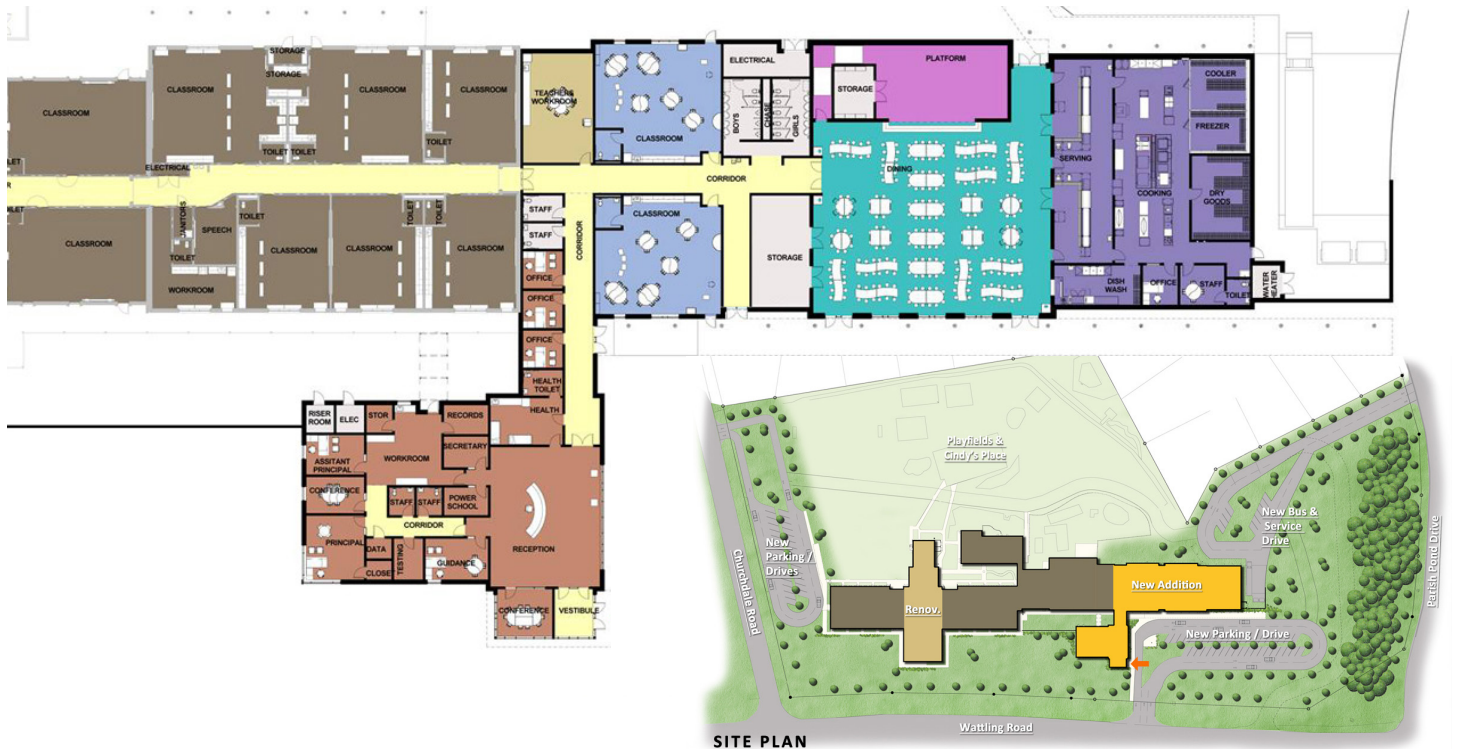
TriMark

Pleasant Ridge Elementary School

Boomerang Design was contracted by Lexington School District Two to renovate and expand this existing elementary school in West Columbia. The existing main entry, visitor parking, and drop off areas were all located near a main road. Site improvements therefore involved creating a new, centralized main entry that is removed from this road. A new separate bus and service road was created with access to the cafeteria and kitchen, and the existing visitor parking and drop-off was also relocated.

New additions include Pre-K Classrooms, a new reception and administration area off of the main entry, a new cafeteria and kitchen, along with new student and staff restrooms. Major renovations include transforming the old administration and media center space into new classrooms and converting the old cafeteria and kitchen into a new media center. While minor renovations were made involving the removal and replacement of old chalkboards and cabinets with new marker boards, cabinets, lighting and technology infrastructure.

The final design pays tributes to native "Doolittle Tokyo Raiders," a South Carolina-based squadron of men, who volunteered for raid on the Japanese Mainland in response to the attack on Pearl Harbor in 1941.



SITE PLAN

