



Rosman Elementary Bus Parking for Transylvania County Schools

July 18, 2008

Symbol	Description
	Spot Elevation
	Existing Contours
	New Contours
	New Concrete Sidewalks
	Storm Drain
	Fence Line

Date
7/18/08
Revisions

Building Code Summary

Name of Project: Rosman Elementary Bus Parking
 Address: Rosman, North Carolina
 Proposed Use: Bus Parking
 Owner/Authorized Agent: The Transylvania County Board of Education
 Norris Barger Phone: 828-684-6113

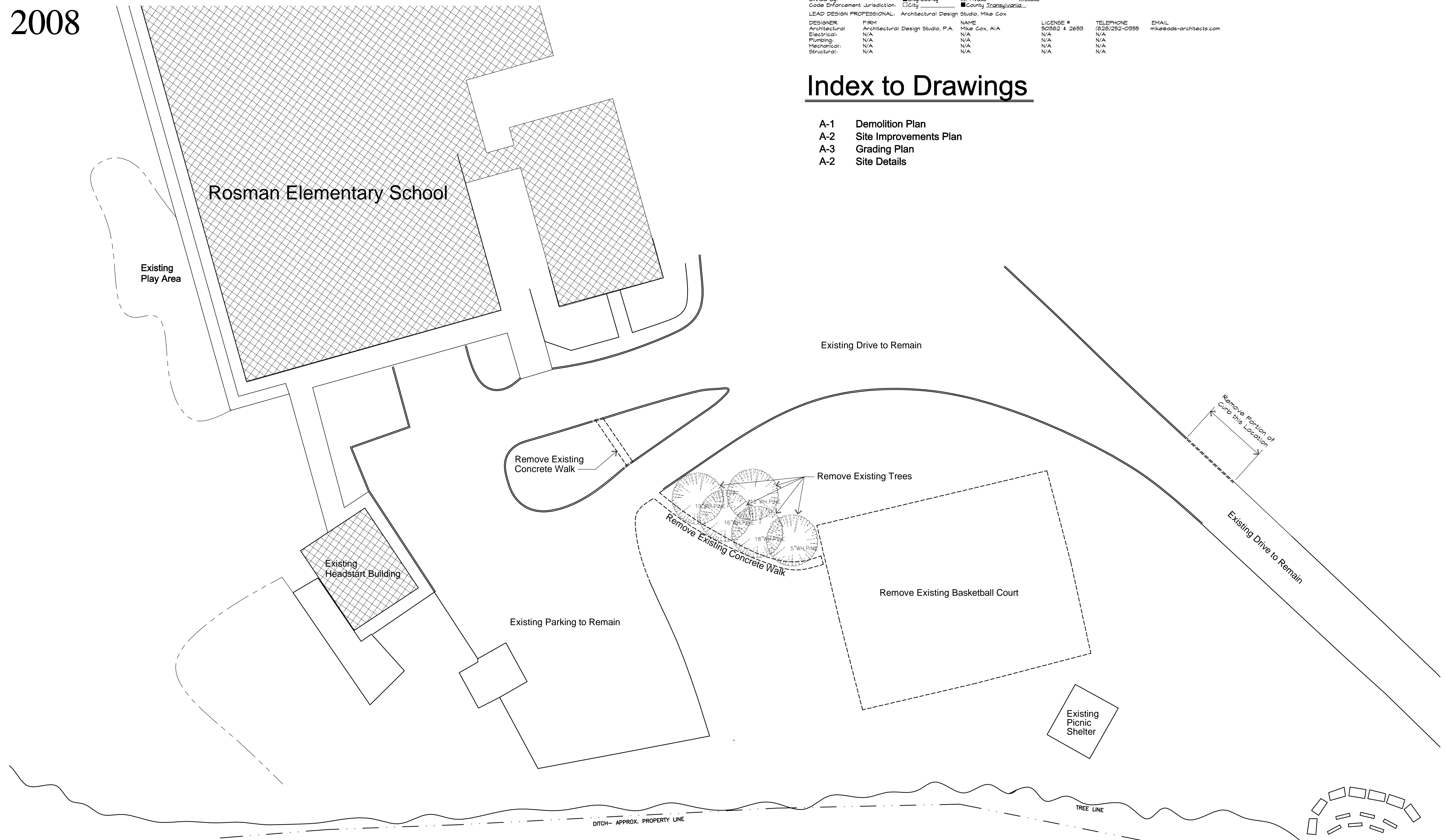
Owned By: City/County Private State
 Code Enforcement Jurisdiction: City County Transylvania

LEAD DESIGN PROFESSIONAL: Architectural Design Studio, Mike Cox

DESIGNER	FIRM	NAME	LICENSE #	TELEPHONE	EMAIL
Architectural	Architectural Design Studio, P.A.	Mike Cox, AIA	50382 + 2653	(828)252-0355	mike@ads-architects.com
Electrical	N/A	N/A	N/A	N/A	N/A
Plumbing	N/A	N/A	N/A	N/A	N/A
Mechanical	N/A	N/A	N/A	N/A	N/A
Structural	N/A	N/A	N/A	N/A	N/A

Index to Drawings

- A-1 Demolition Plan
- A-2 Site Improvements Plan
- A-3 Grading Plan
- A-2 Site Details



GRAPHIC SCALE - FEET
 Rosman Elementary Bus Parking - Demolition Plan
 Scale 1" = 20'



Rosman Elementary Bus Parking
Rosman, North Carolina

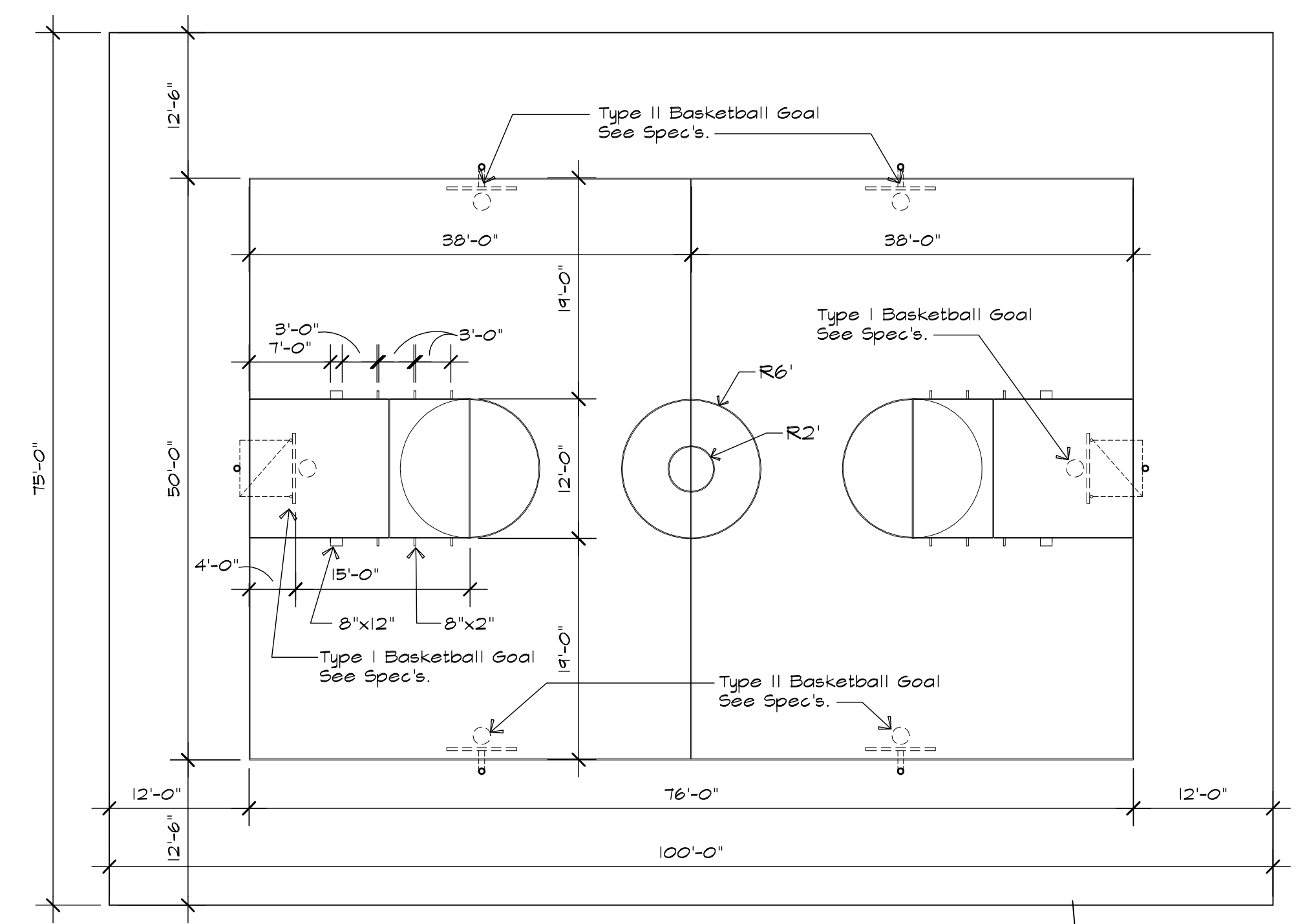
Architectural Design Studio, P.A.
90 Church Street, Asheville, NC 28801 Phone: 828.252.0355 Fax: 828.252.4059



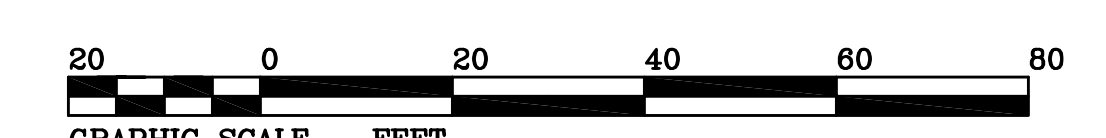
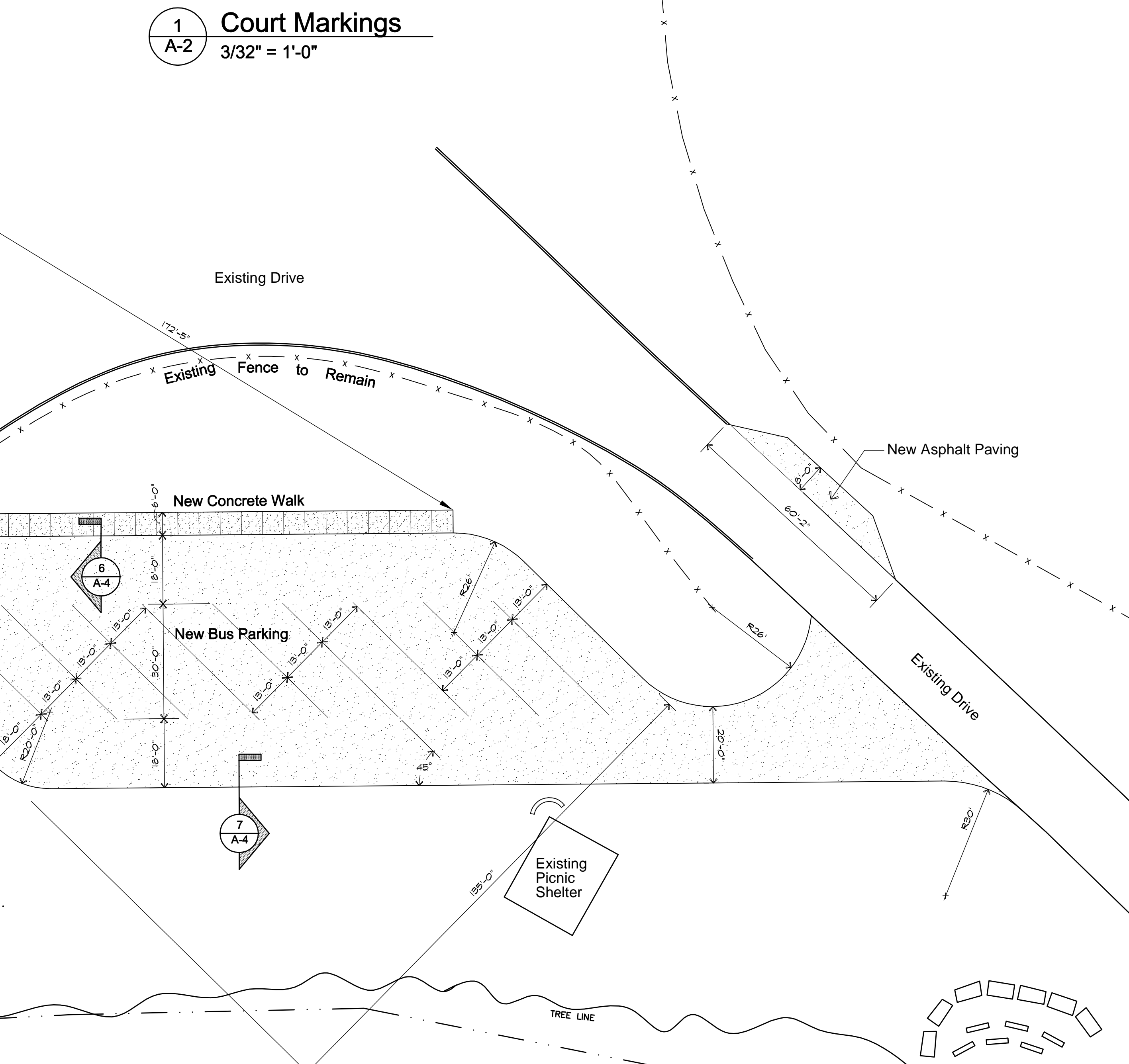
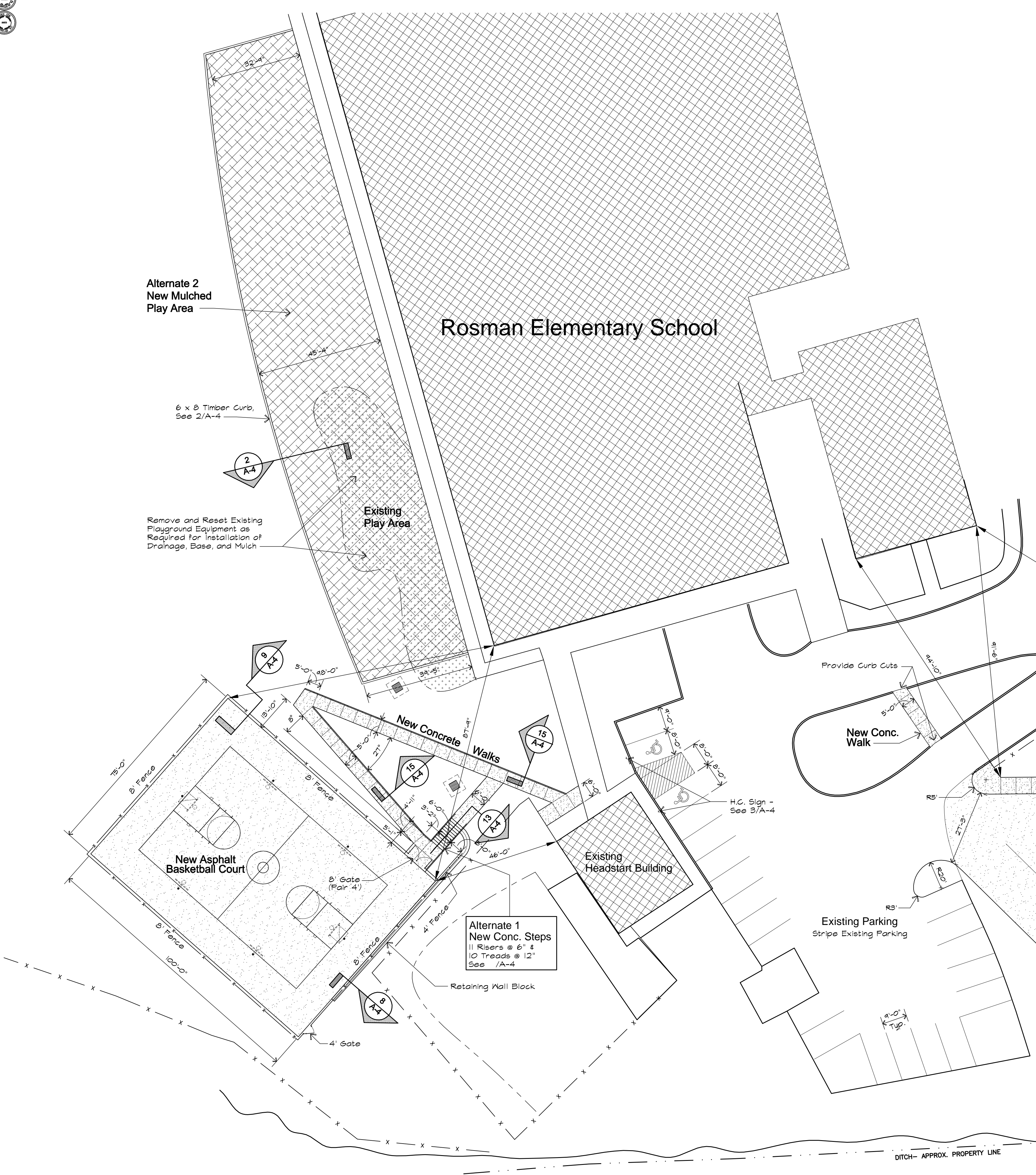
Legend	
Symbol	Description
	Spot Elevation
	Existing Contours
	New Contours
	New Concrete Sidewalks
	Storm Drain
	Fence Line

Date
7/18/08

Revisions



1 Court Markings
A-2 3/32" = 1'-0"



GRAPHIC SCALE - FEET
Rosman Elementary Bus Parking - Site Improvements
Scale 1" = 20'



Rosman Elementary Bus Parking
Rosman, North Carolina

Architectural Design Studio, P.A.
90 Church Street, Asheville, NC 28801 Phone: 828.252.0355 Fax: 828.252.4059

Sheet
A-2



Legend	
Symbol	Description
⊕	Spot Elevation
—	Existing Contours
- - -	New Contours
▨	New Concrete Sidewalks
---	Storm Drain
---	Fence Line

Date	7/18/08
Revisions	

Provide 6" Conc. Plug for Perforated Culvert

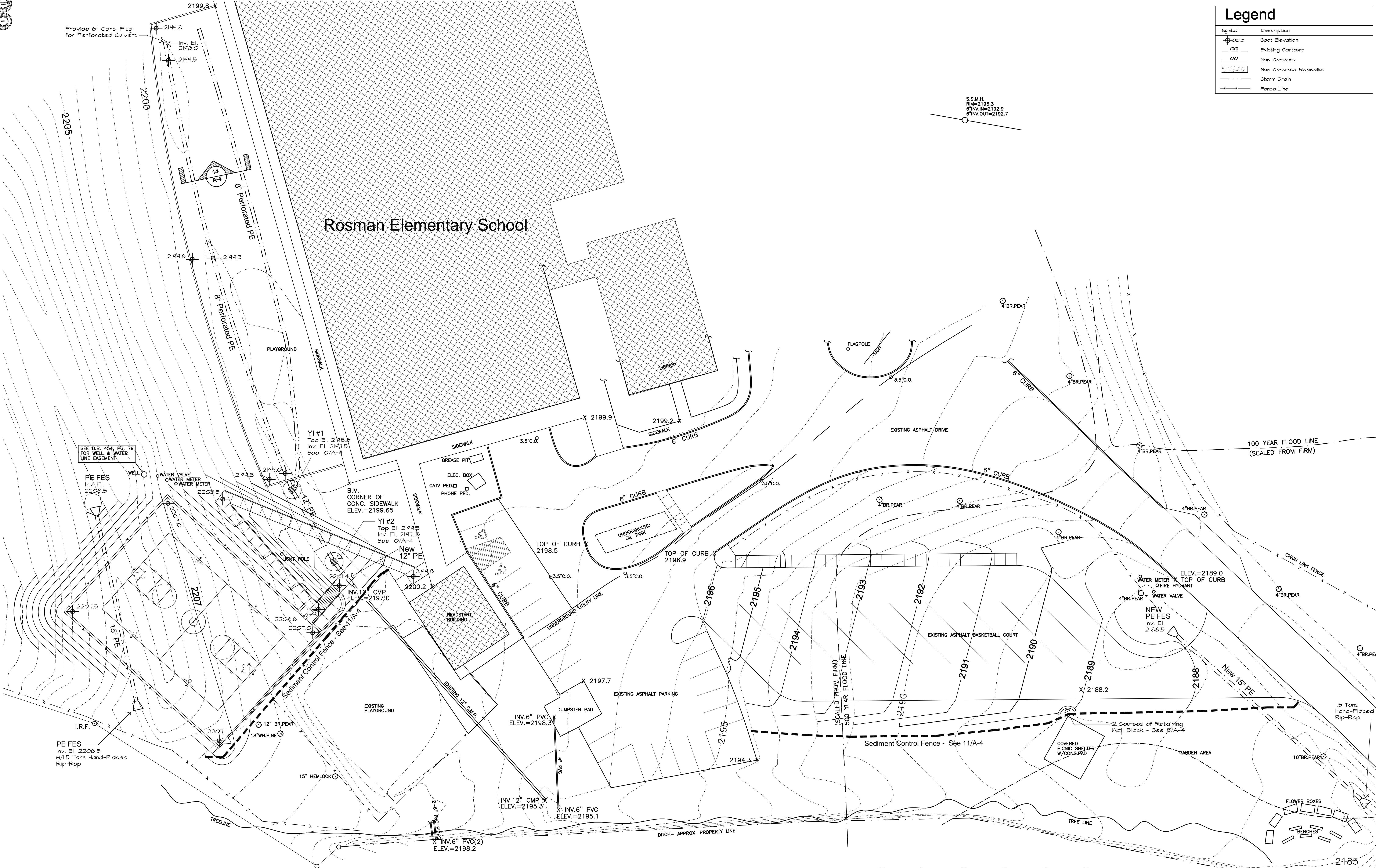
S.S.M.H.
RM=2196.3
6" INV. IN=2192.9
6" INV. OUT=2192.7

Rosman Elementary School

Rosman Elementary Bus Parking

Rosman, North Carolina

Architectural Design Studio, P.A.
90 Church Street, Asheville, NC 28801 Phone: 828.252.0355 Fax: 828.252.4059



SEE D.B. 454, PG. 79 FOR WELL & WATER LINE EASEMENT

Y1 #1
Top El. 2198.8
Inv. El. 2197.5
See 10/A-4

B.M. CORNER OF CONC. SIDEWALK
ELEV.=2199.65

Y1 #2
Top El. 2199.5
Inv. El. 2197.5
See 10/A-4

INV. 12" CMP
ELEV.=2197.0

INV. 6" PVC
ELEV.=2198.3

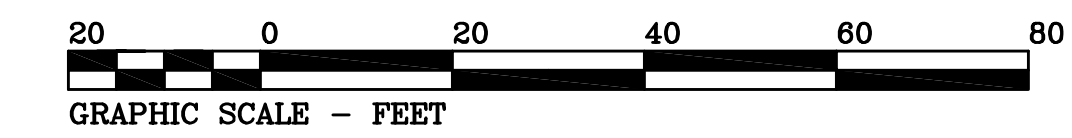
INV. 12" CMP
ELEV.=2195.3

INV. 6" PVC
ELEV.=2195.1

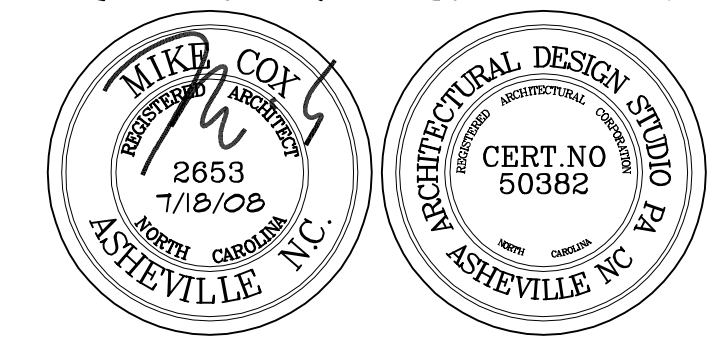
INV. 6" PVC(2)
ELEV.=2198.2

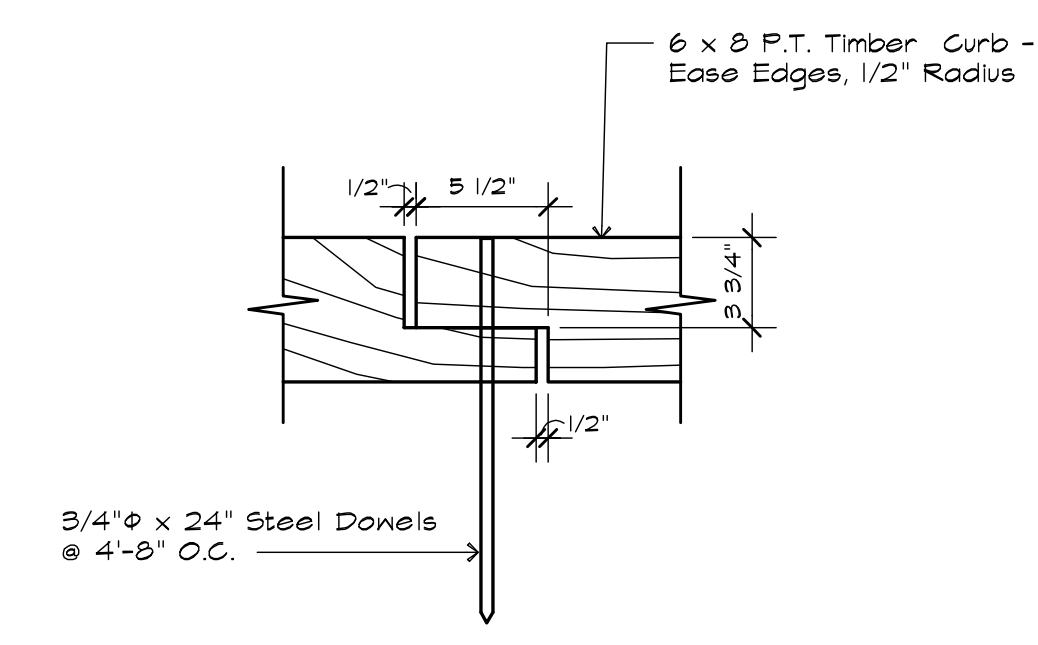
PE FES
Inv. El. 2206.5
w/1.5 Tons Hand-Placed Rip-Rap

NEW PE FES
Inv. El. 2184

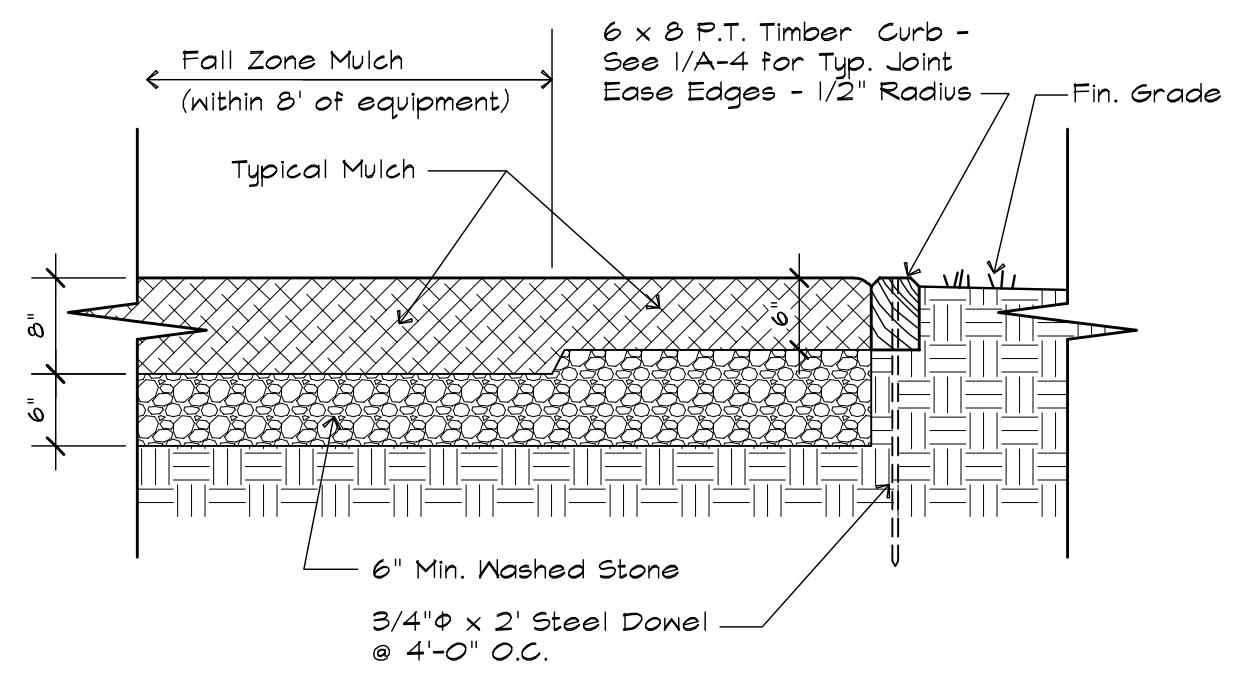


Rosman Elementary Bus Parking - Grading Plan
Scale 1" = 20'

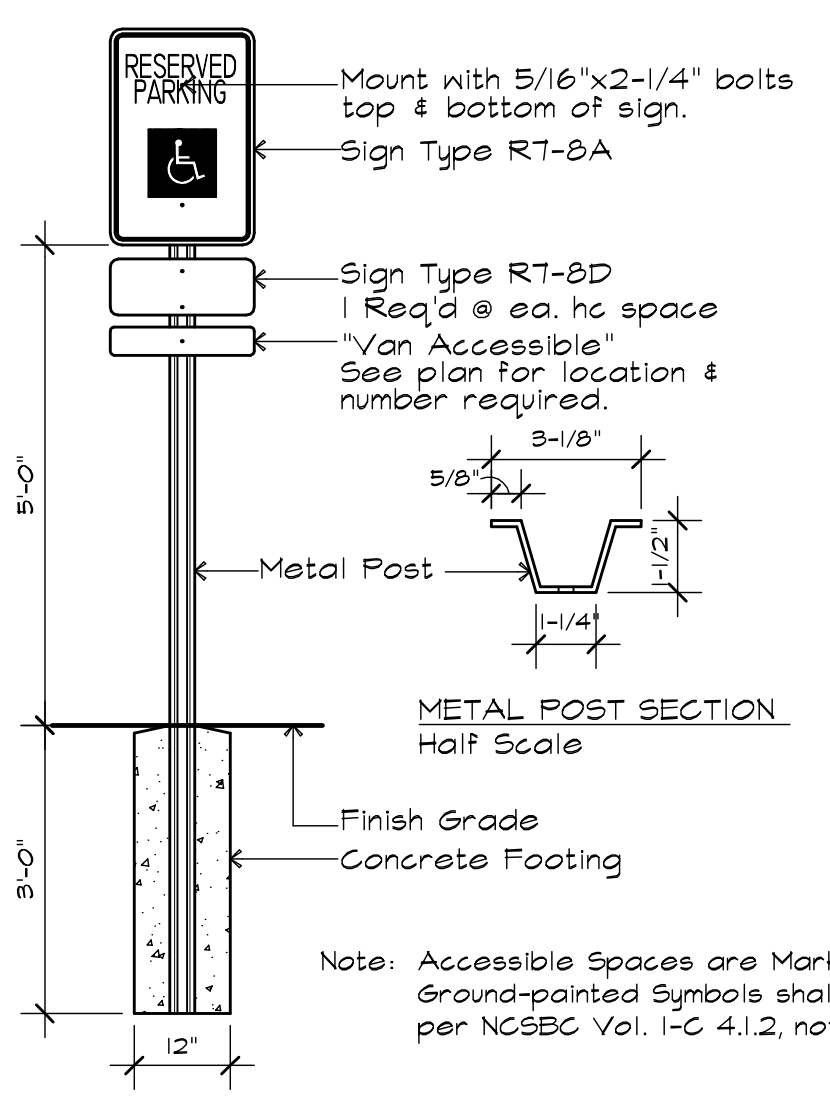




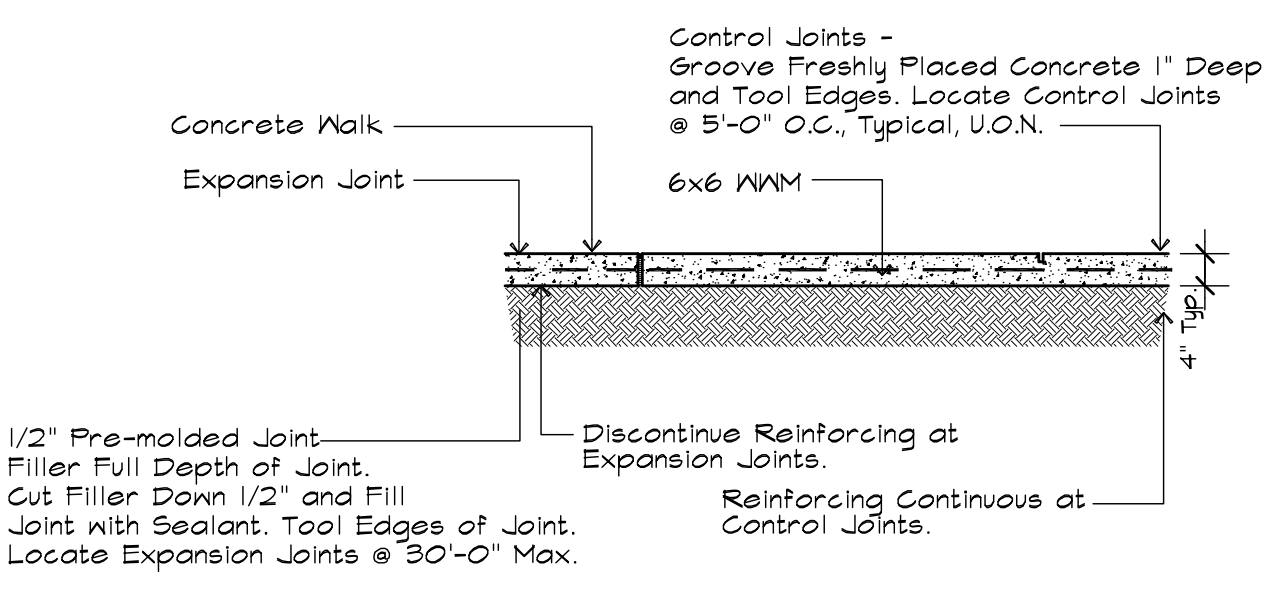
1
A-4 **Typ. Jt. For Wood Curb**
Not to Scale
Jts. @ 8'-0" O.C. Max.



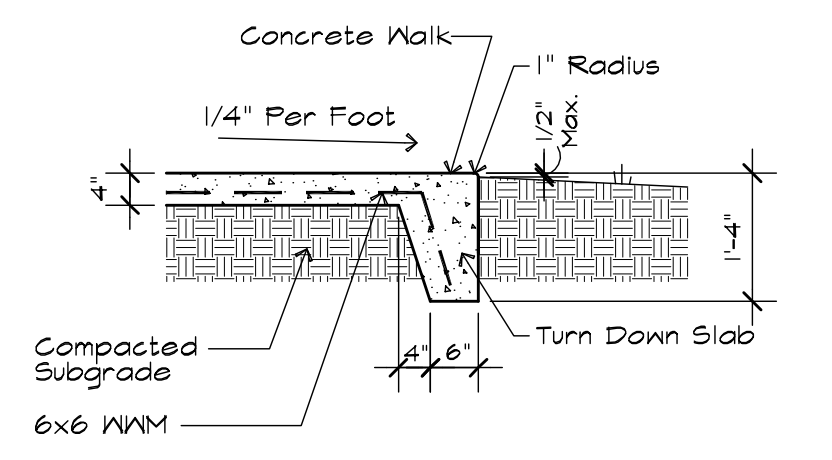
2
A-4 **Mulch Detail**
3/4" = 1'-0"



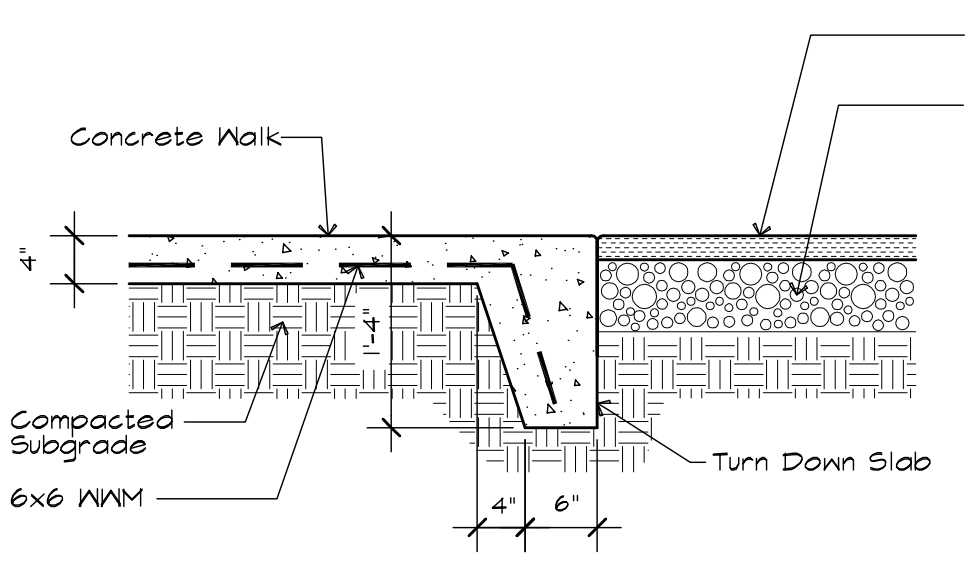
3
A-4 **H.C. Parking Sign**
No Scale



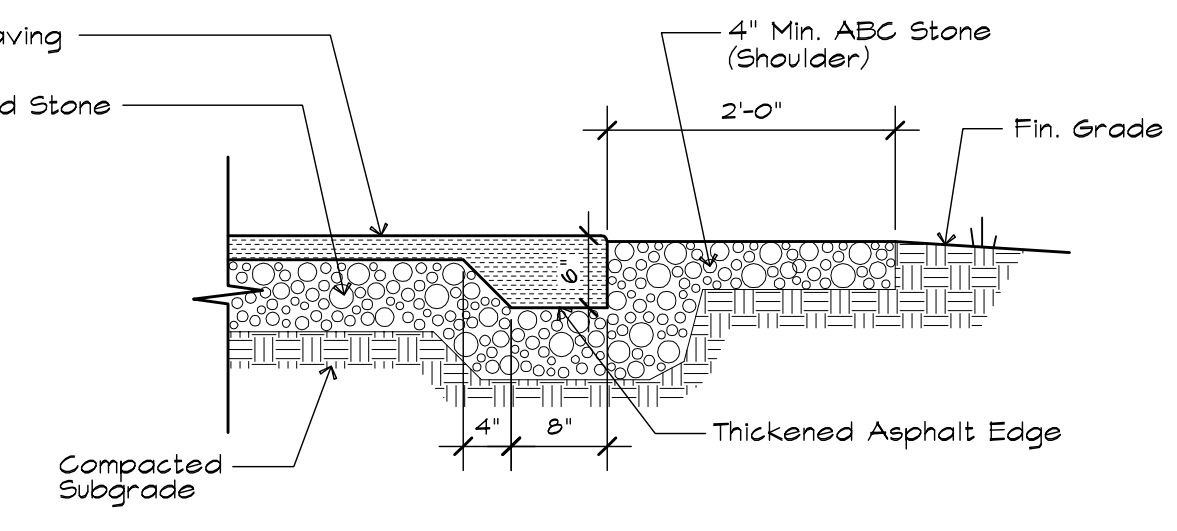
4
A-4 **Typical Walk Joint**
Not to Scale



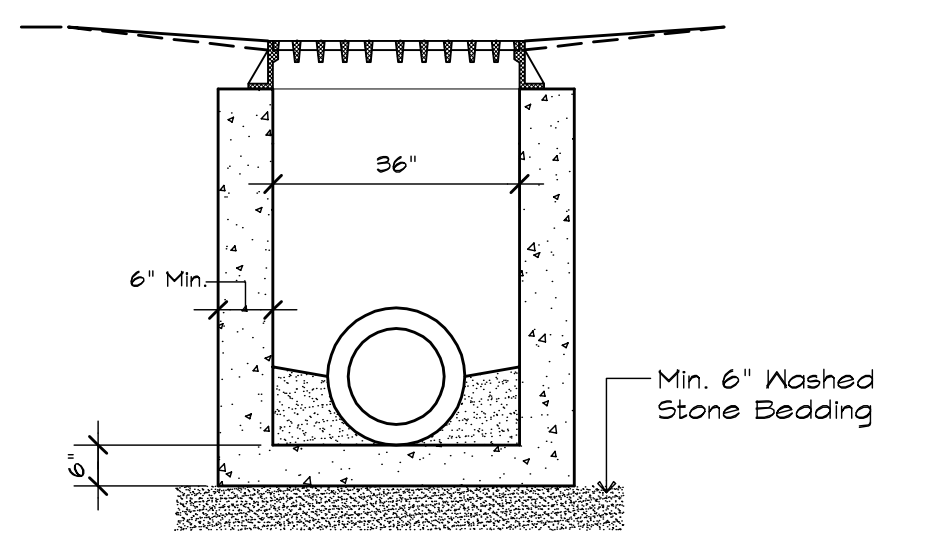
5
A-4 **Typical Walk Edge**
1/2" = 1'-0"



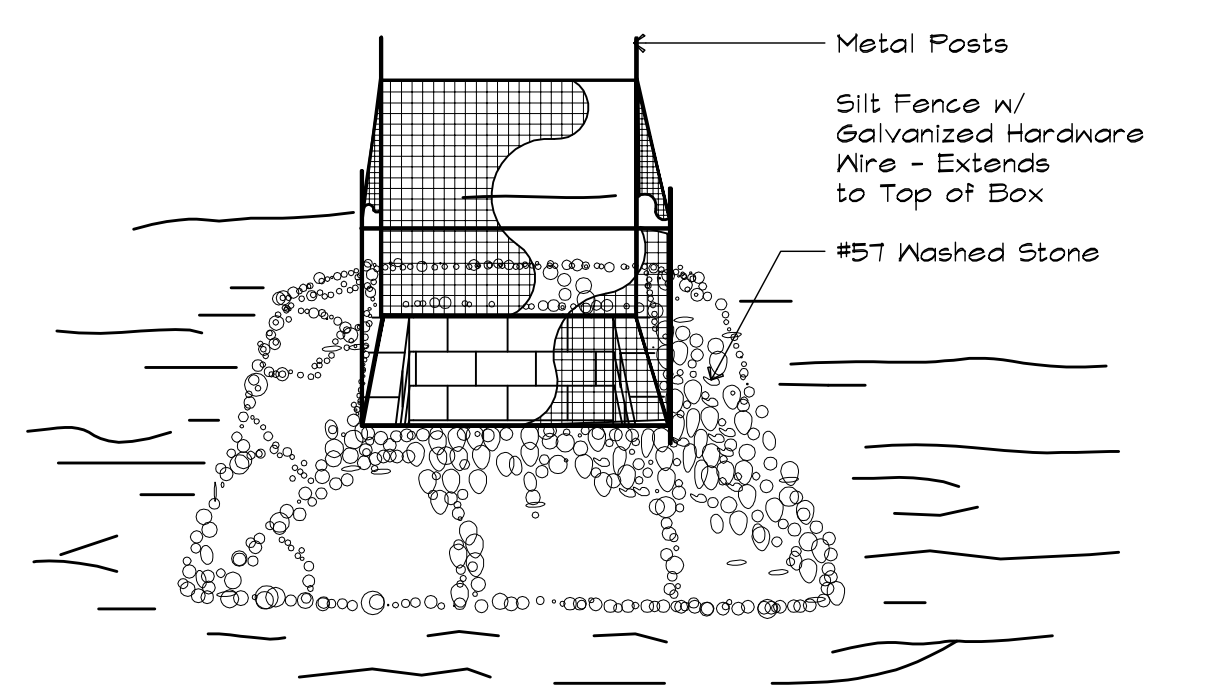
6
A-4 **Walk-to-Paving Detail**
3/4" = 1'-0"



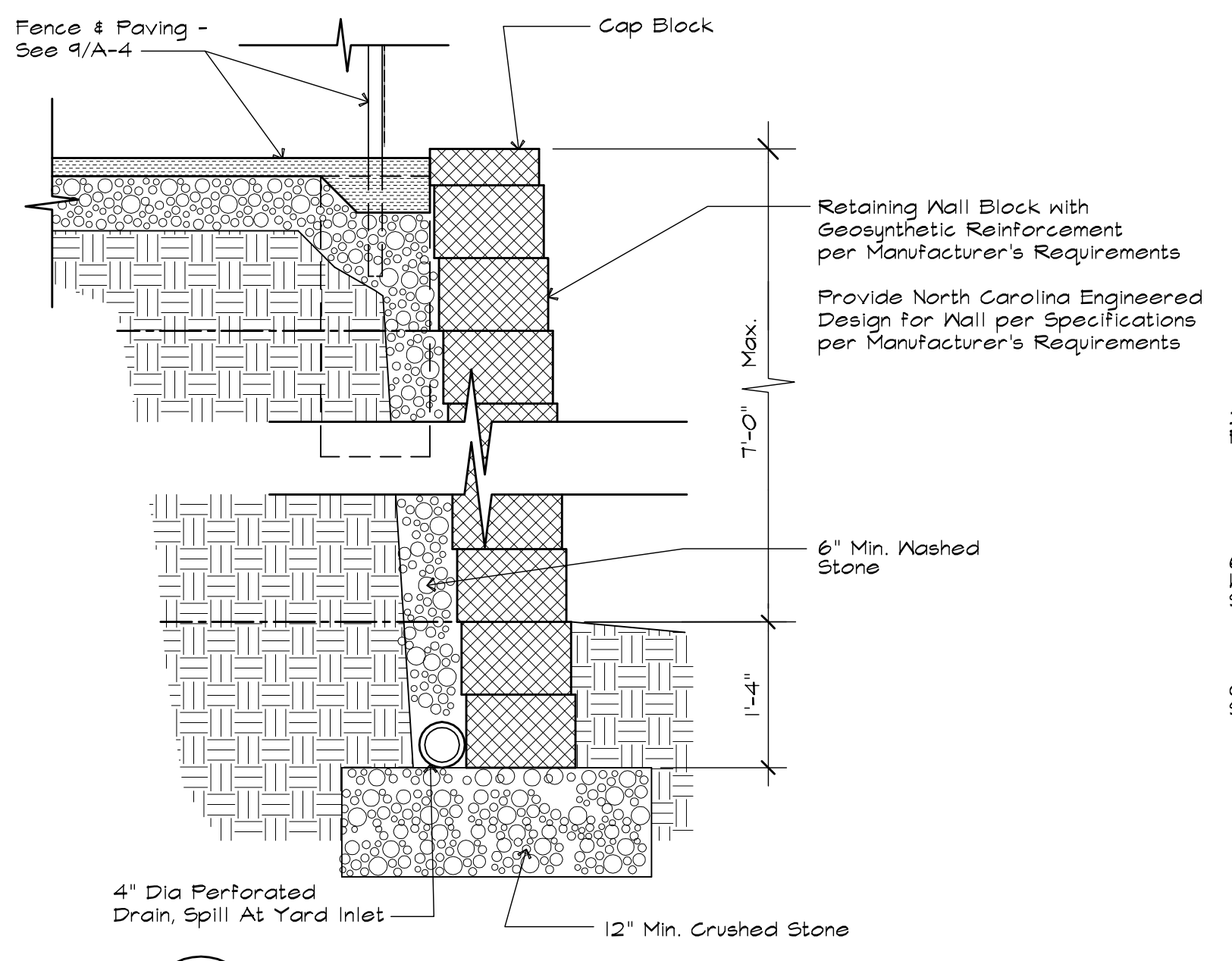
7
A-4 **Asphalt Edge Detail**
3/4" = 1'-0"



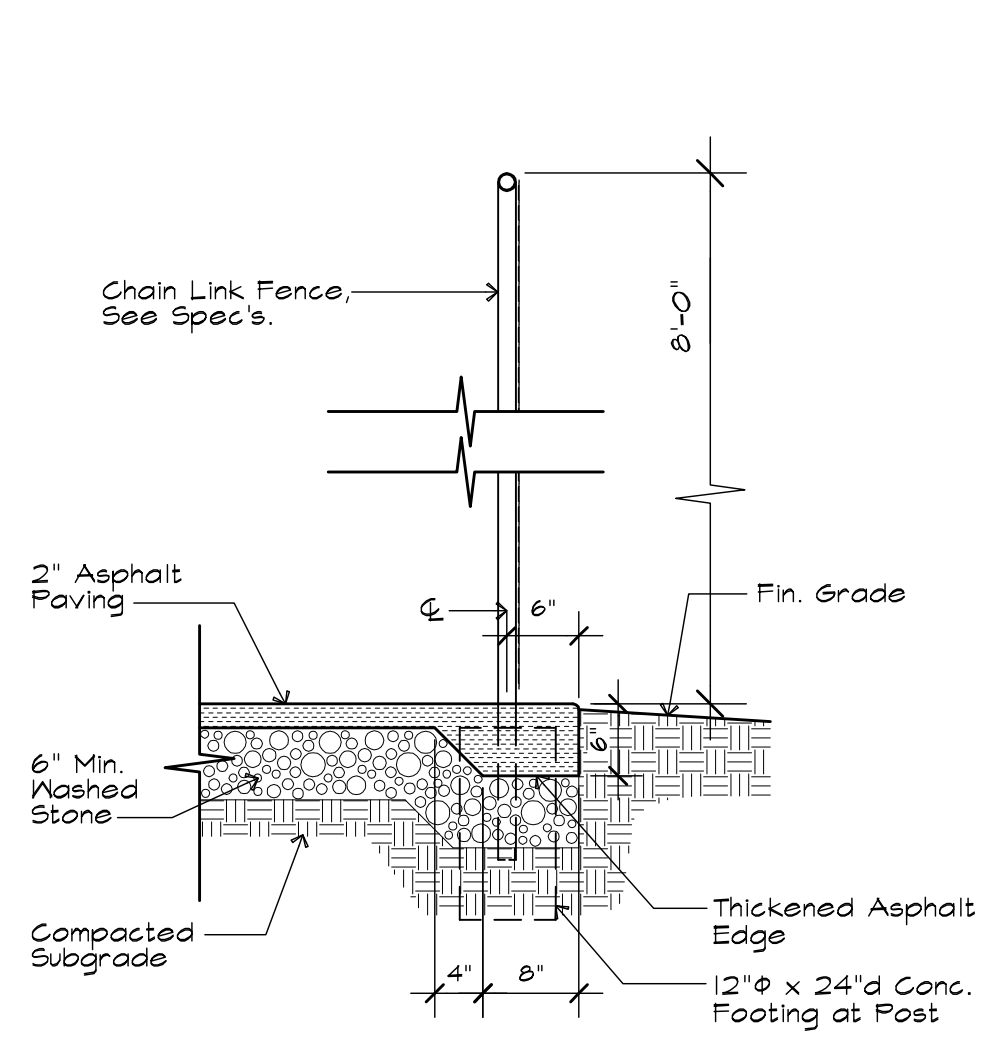
11
A-4 **Sediment Control Fence**
No Scale



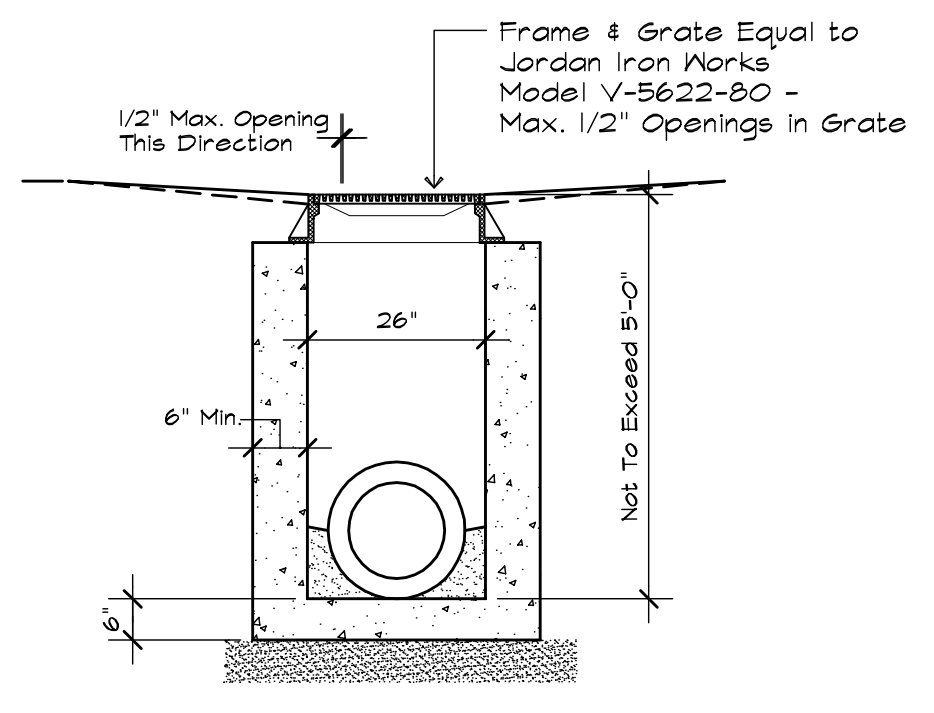
12
A-4 **Catch Basin/Yard Inlet Protection**
No Scale



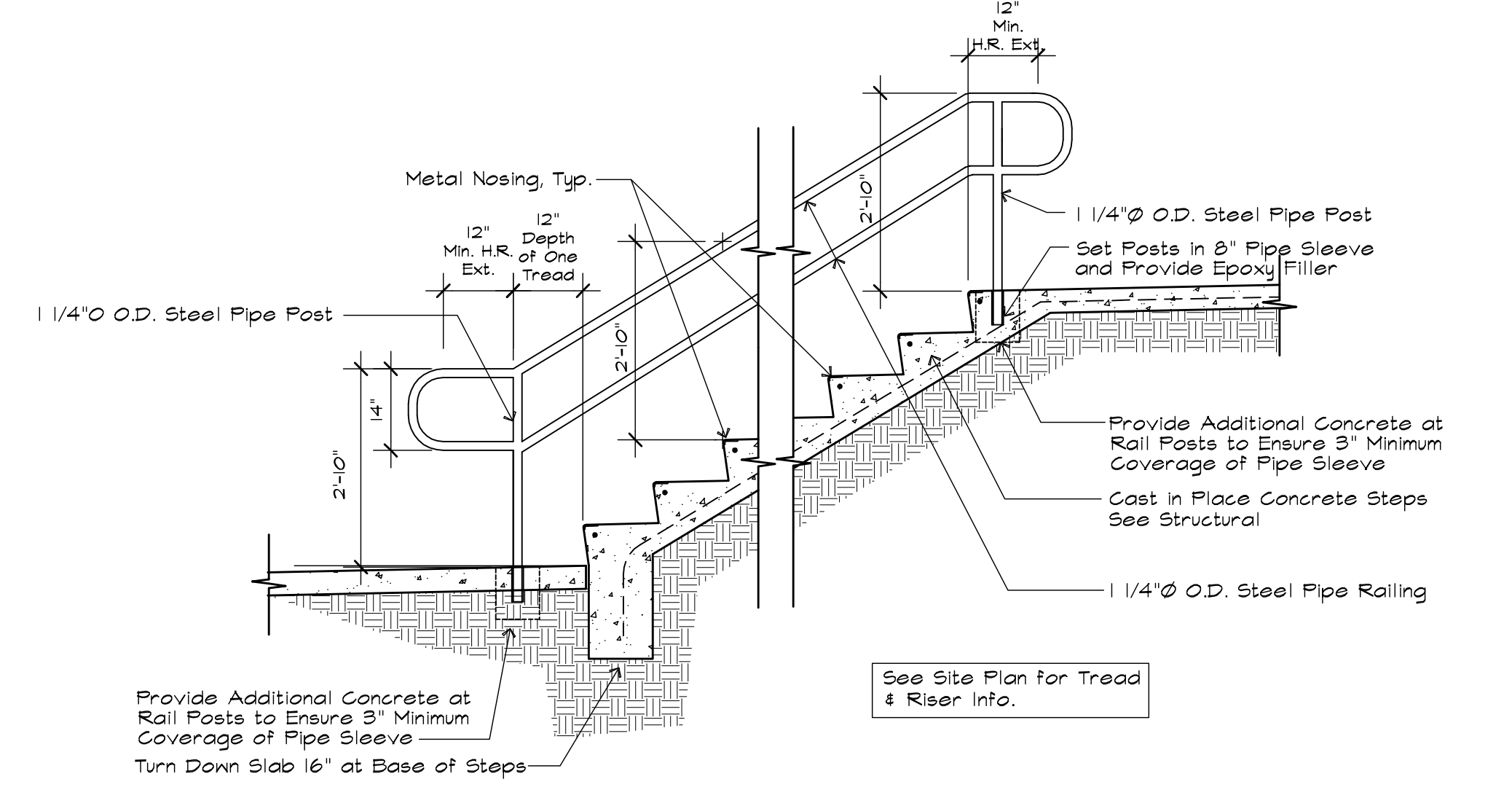
8
A-4 **Retaining Wall Detail**
3/4" = 1'-0"



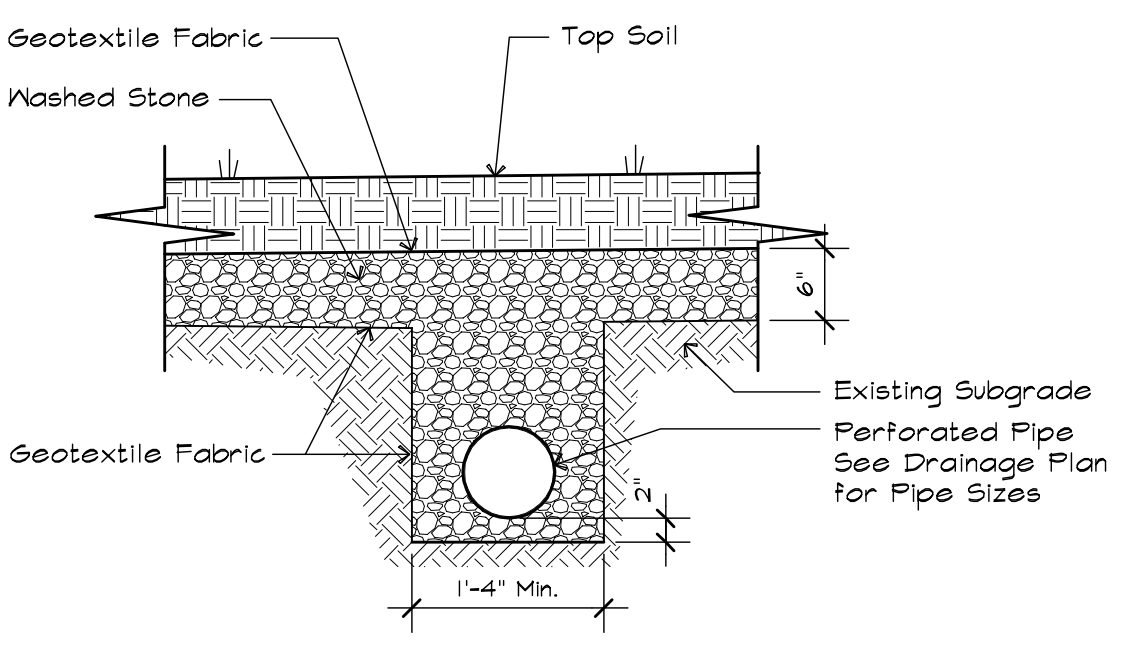
9
A-4 **Fence @ Asphalt Edge**
No Scale



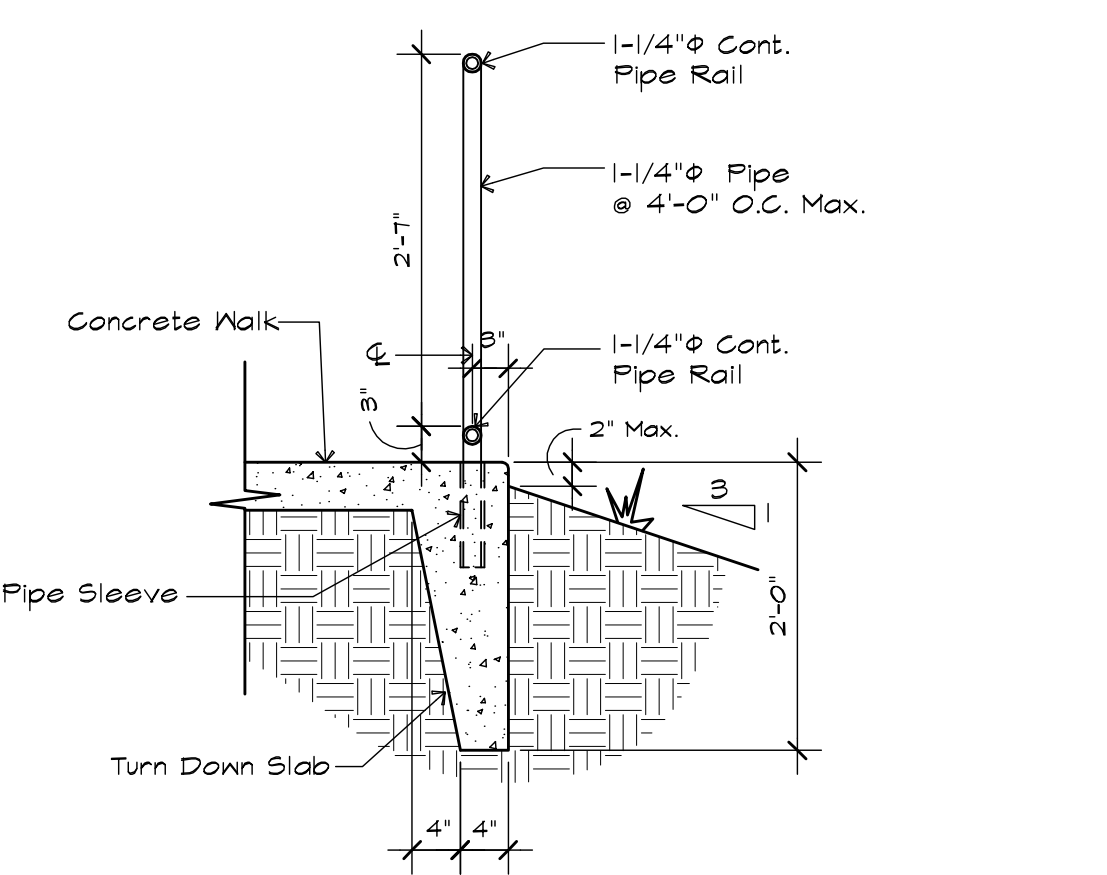
10
A-4 **Precast Concrete Yard Inlet**
Not to Scale



13
A-4 **Concrete Steps - Alternate 1**
1/2" = 1'-0"



14
A-4 **Subsurface Drainage Detail**
3/4" = 1'-0"



15
A-4 **Walk Edge with Handrail**
3/4" = 1'-0"

