

# EARLY LEARNING, FEDERAL PROGRAMS AND AIG

TRANSYLVANIA COUNTY SCHOOLS

20-21

# EARLY LEARNING WE ARE INCLUSIVE LEARNING CENTERS





# WHAT DO WE DO?

SING

DANCE

PLAY

COUNT

SCIENCE EXPERIMENTS

READ

GROSS MOTOR

FINE MOTOR

PROBLEM SOLVE

EAT TOGETHER

HELP ONE ANOTHER

WORK TOGETHER

SNACK

NAP

**WE HAVE FUN LEARNING EVERYDAY!**

## HOW DO WE LEARN?

FACE TO FACE

GOOGLE MEETS

GOOGLE CLASSROOM

**HANDS-ON, ENGAGED LEARNING**

# A LOOK AT OUR NUMBERS 20-21

48 TOTAL

## THE BEE HIVE AT BES

12 CHILDREN

1 TEACHER

1 TEACHER ASSISTANT

## THE CUB HOUSE AT RES

18 CHILDREN

1 TEACHER

2 TEACHER ASSISTANTS

## THE CUBS DEN AT TCH

18 CHILDREN

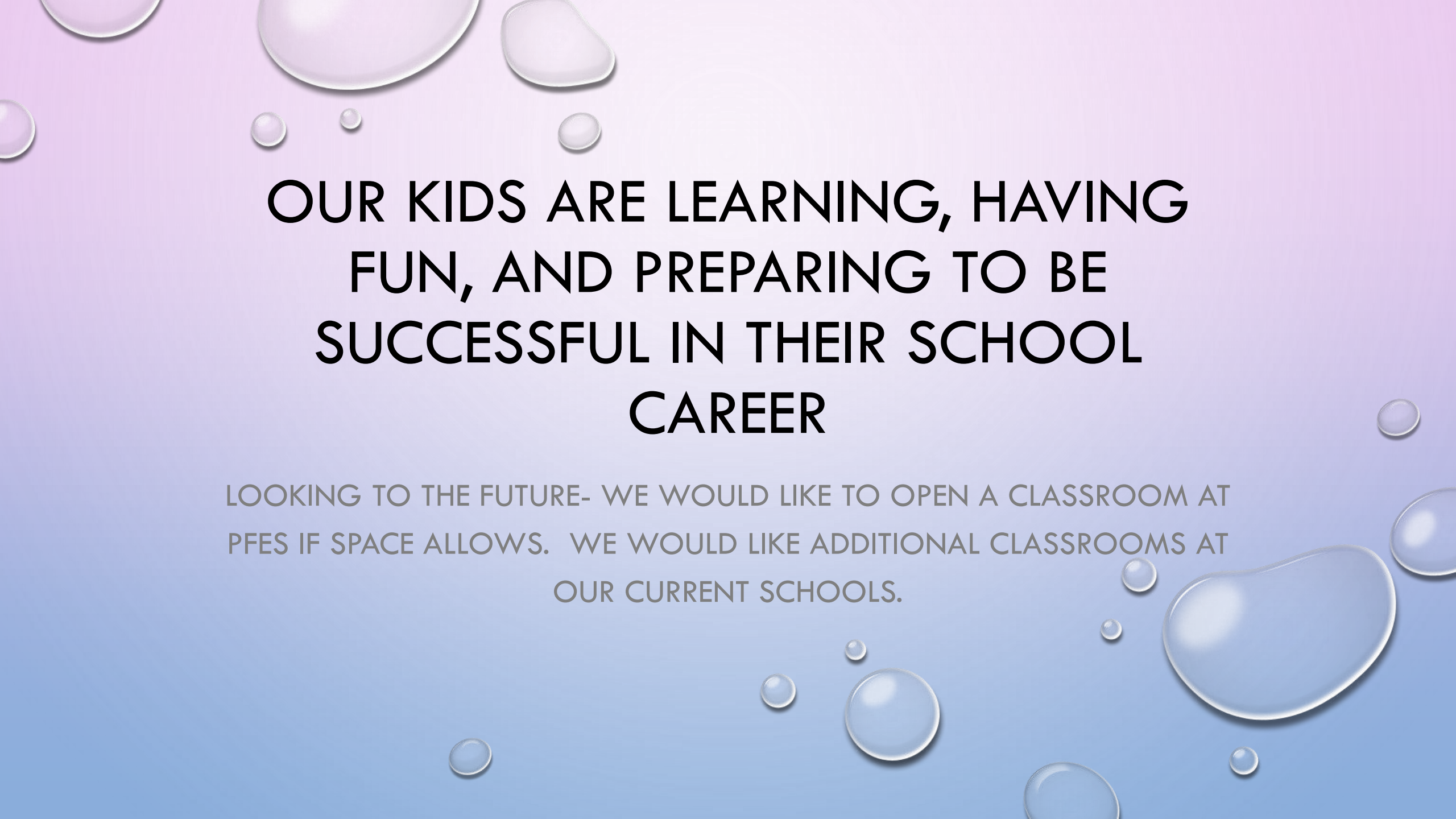
1 TEACHER

2 TEACHER ASSISTANTS

**WE**

**ARE**

**FULL!**



**OUR KIDS ARE LEARNING, HAVING  
FUN, AND PREPARING TO BE  
SUCCESSFUL IN THEIR SCHOOL  
CAREER**

LOOKING TO THE FUTURE- WE WOULD LIKE TO OPEN A CLASSROOM AT  
PFES IF SPACE ALLOWS. WE WOULD LIKE ADDITIONAL CLASSROOMS AT  
OUR CURRENT SCHOOLS.

# FEDERAL PROGRAMS

FREE AND REDUCED NUMBERS  
47% DISTRICT (1 508/3194)

**BES 47%**

**PFES 51%**

**RES 55%**

**TCH 52%**

**BMS-46%    RMS- 50%**

**BHS- 33%    RHS -38%**

**DRS – 71%**





# FEDERAL PROGRAMS

**TITLE I-** IMPROVING BASIC EDUCATION

**TITLE II -** SUPPORTING EFFECTIVE INSTRUCTION

**TITLE III-** SUPPORTING ELL

**TITLE IV -** STUDENT SUPPORT AND ACADEMIC ENRICHMENT

ALWAYS KEEPING THE FOCUS ON OUR STUDENTS

# AIG

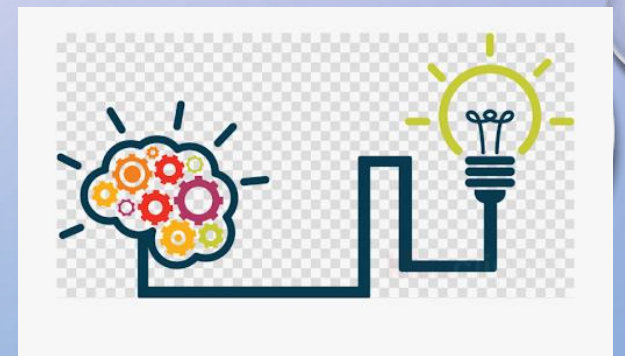
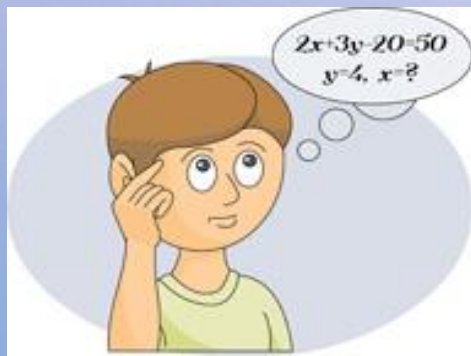
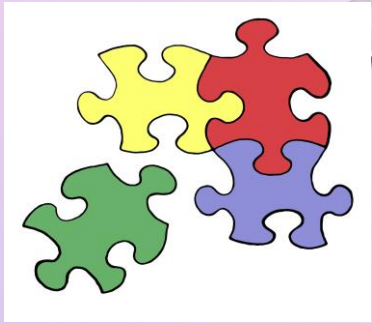
CURRENTLY WE HAVE 254 IDENTIFIED STUDENTS

WE NURTURE 286 STUDENTS

\*\*\* MULTIPLE PATHWAYS TO AIG IDENTIFICATION

MOST IMPORTANTLY- HOW ARE WE MEETING THE NEEDS OF OUR CHILDREN?

AIG –ALL DAY, EVERY DAY





# THE END

