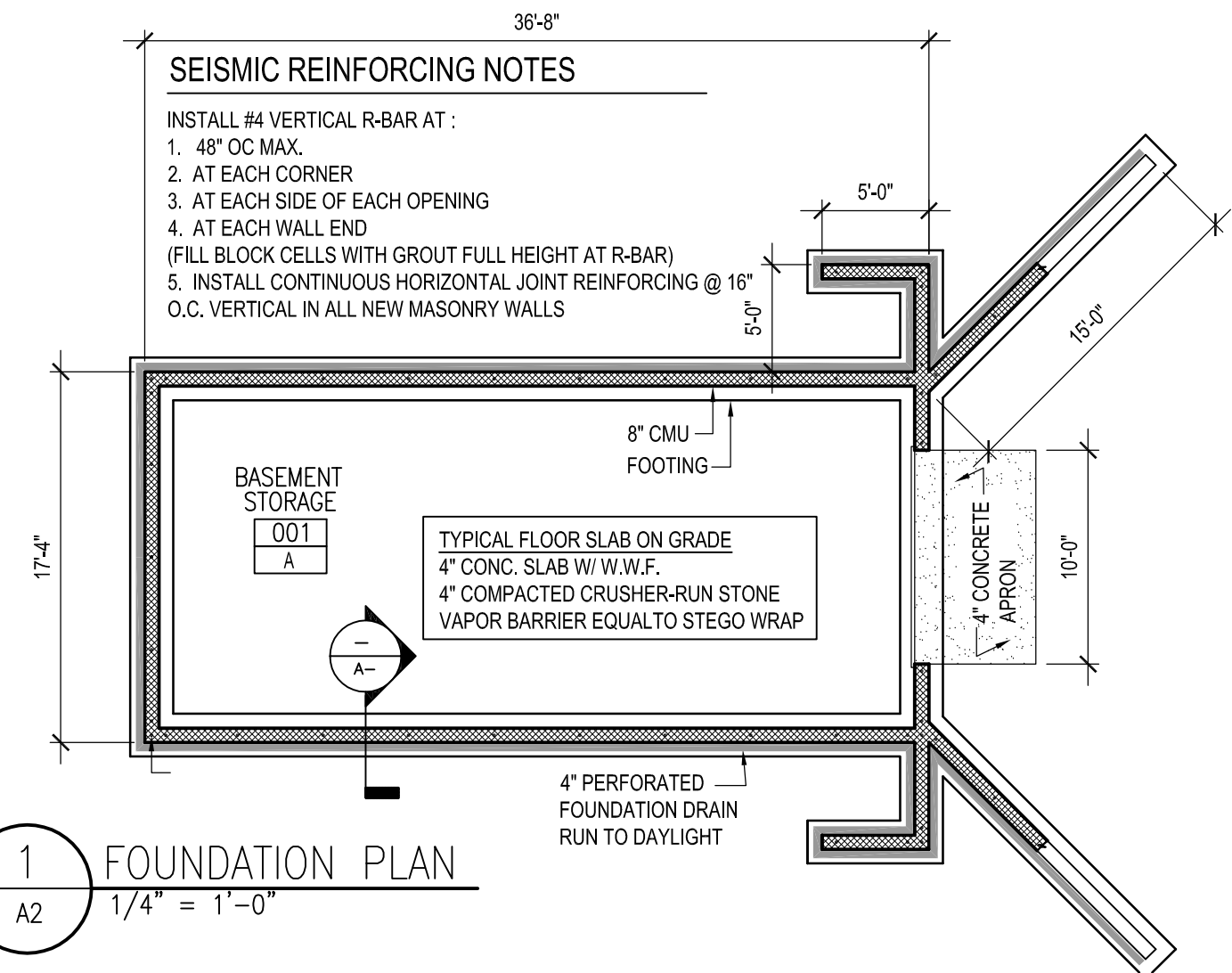
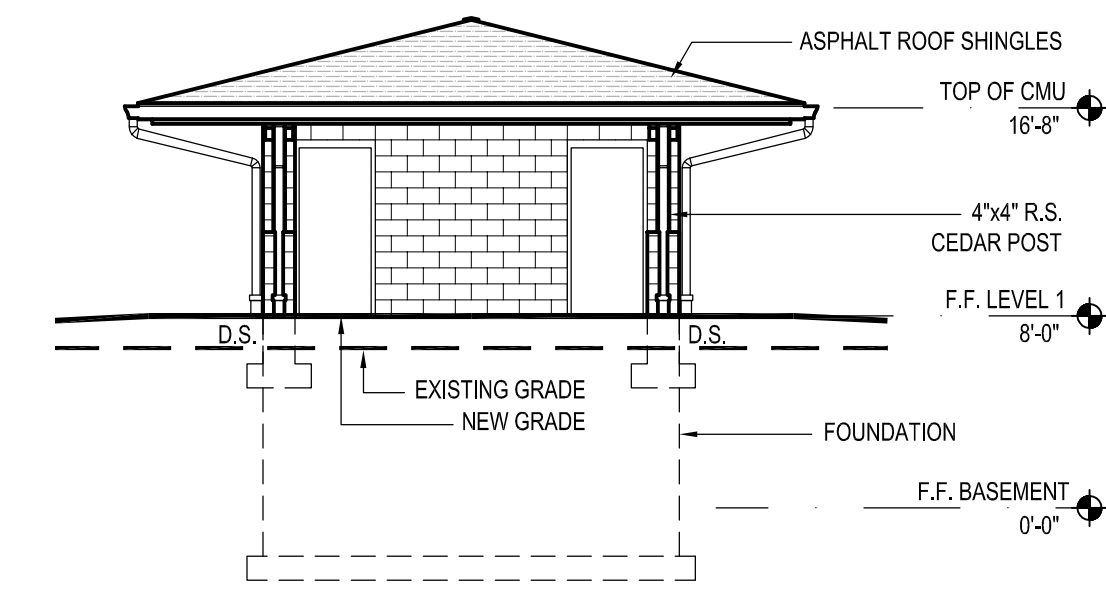


9 CEILING PLAN  
A2 1/4" = 1'-0"



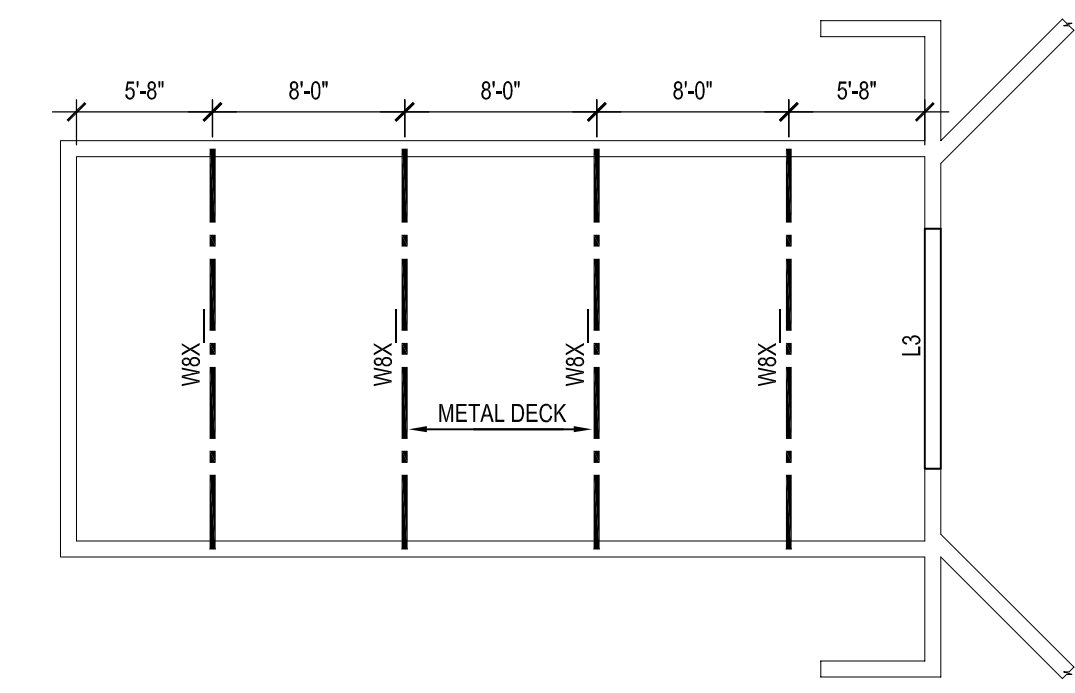
1 FOUNDATION PLAN  
A2 1/4" = 1'-0"



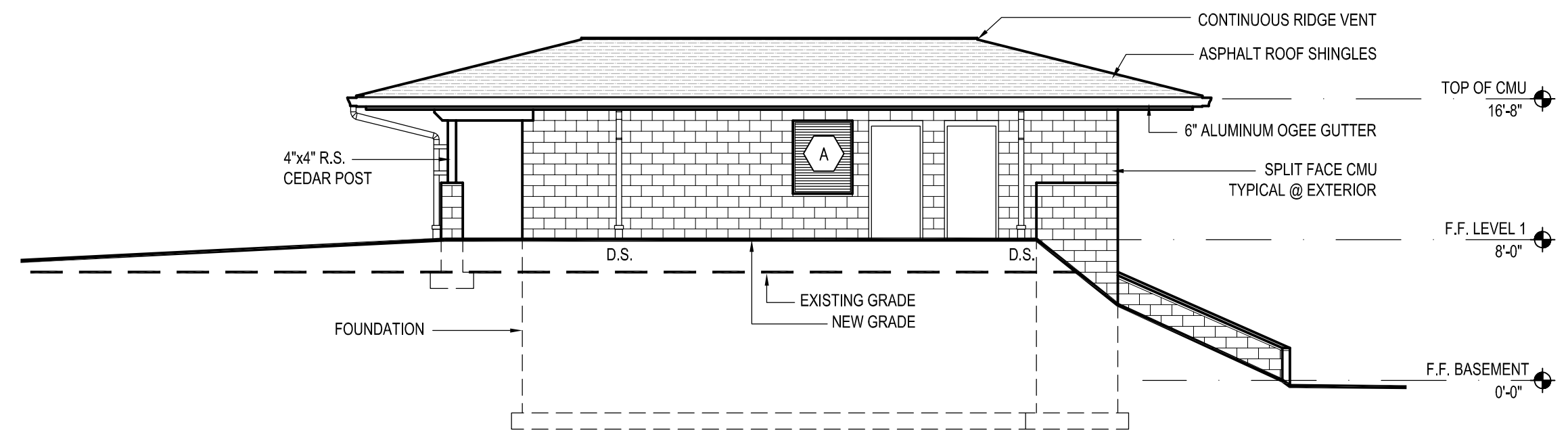
5 ELEVATION  
A2 1/8" = 1'-0"

**LEGEND:**

1/2" EXT. GYPSUM BOARD - PAINT	
LIGHT FIXTURES:	
2' x 2' LAY-IN FLUORESCENT	
2' x 4' LAY-IN FLUORESCENT	
RECESSED CAN FIXTURE	
RELOCATE EXISTING	
2' x 4' RADIANT PANEL	
MECHANICAL EXHAUST FAN	



2 FRAMING PLAN  
A2 1/8" = 1'-0"

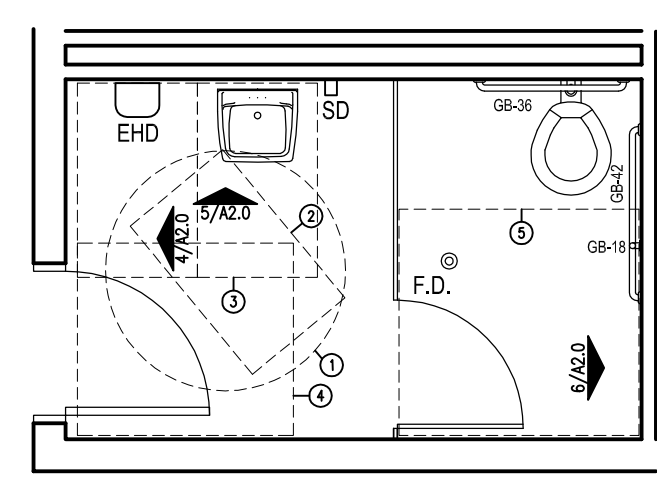


6 ELEVATION  
A2 1/8" = 1'-0"

**TOILET ACCESSORIES**

MARK	MODEL	ACCESSORY
GB-18	B-4805.09x18	GRAB BAR 18"
GB-24	B-4805.09x24	GRAB BAR 24"
GB-36	B-4805.09x36	GRAB BAR 36"
GB-42	B-4805.09x42	GRAB BAR 42"
TRD	DFCI	DUAL TOILET PAPER DISPENSER
WY	E-200-3438	MIRROR 24" x 36"
EHD	SLQMN EHD001	ELECTRIC HAND DRYER
SD	DFCI	SOAP DISPENSER

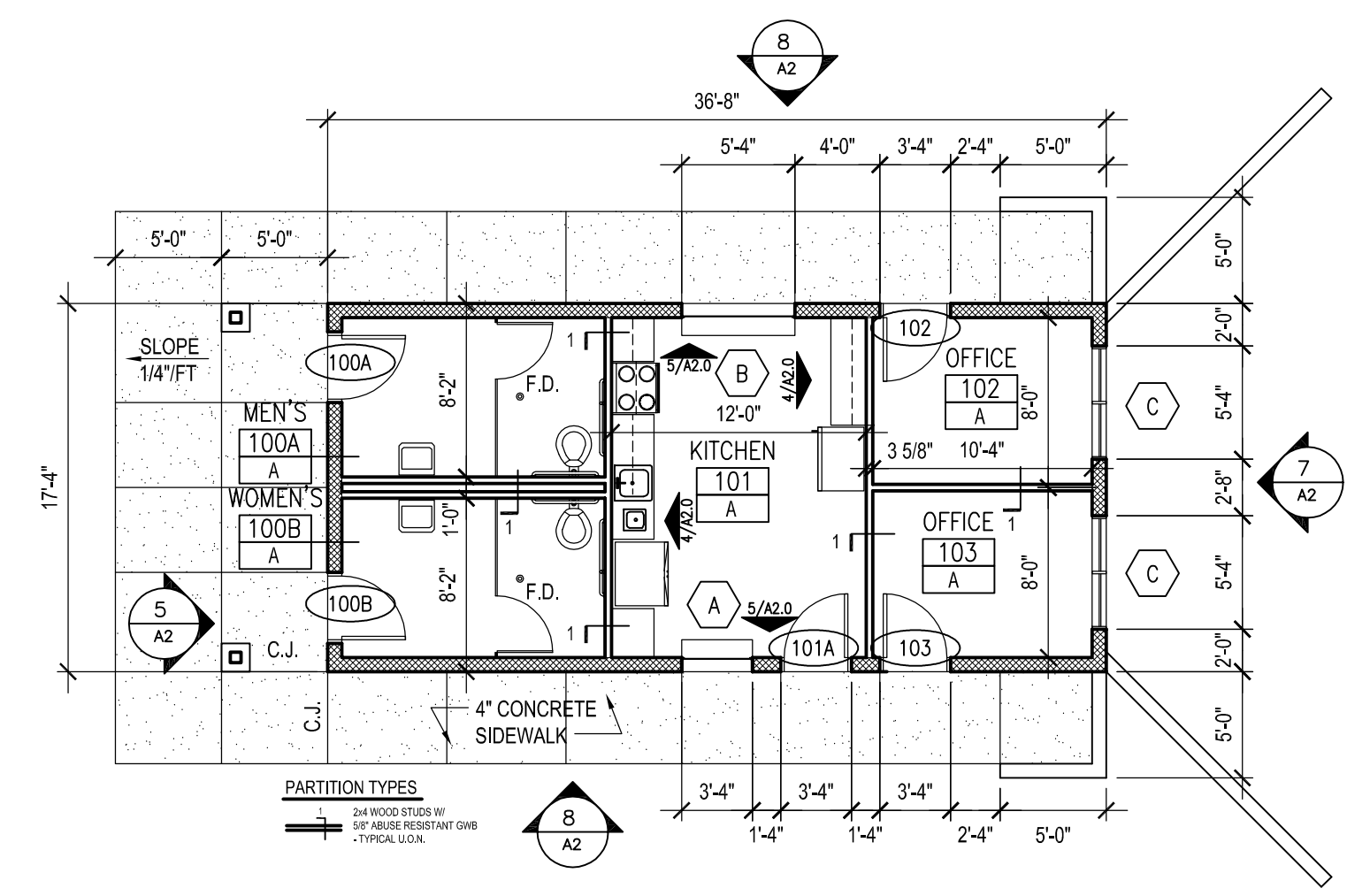
**NOTES:**  
 1. ALL NUMBERS ARE BORRCK UNLESS OTHERWISE NOTED. EQUAL PRODUCTS BY BRADLEY, AMERICAN SPECIALTIES OR MANNING PARKER ARE ACCEPTABLE. ITEMS NOTED "OWNER FURNISH" WILL BE FURNISHED BY THE OWNER AND INSTALLED BY THE CONTRACTOR.  
 2. ALL DIMS & ELEVATIONS TO CONFORM TO ANSI 117.1-2003.  
 3. "OFCC" = OWNER FURNISHED CONTRACTOR INSTALLED  
 4. "OFCC" ITEMS ARE TO CONFORM TO MOUNTING HEIGHT AND DIMENSIONAL REQUIREMENTS OUTLINED ON THE PLANS.



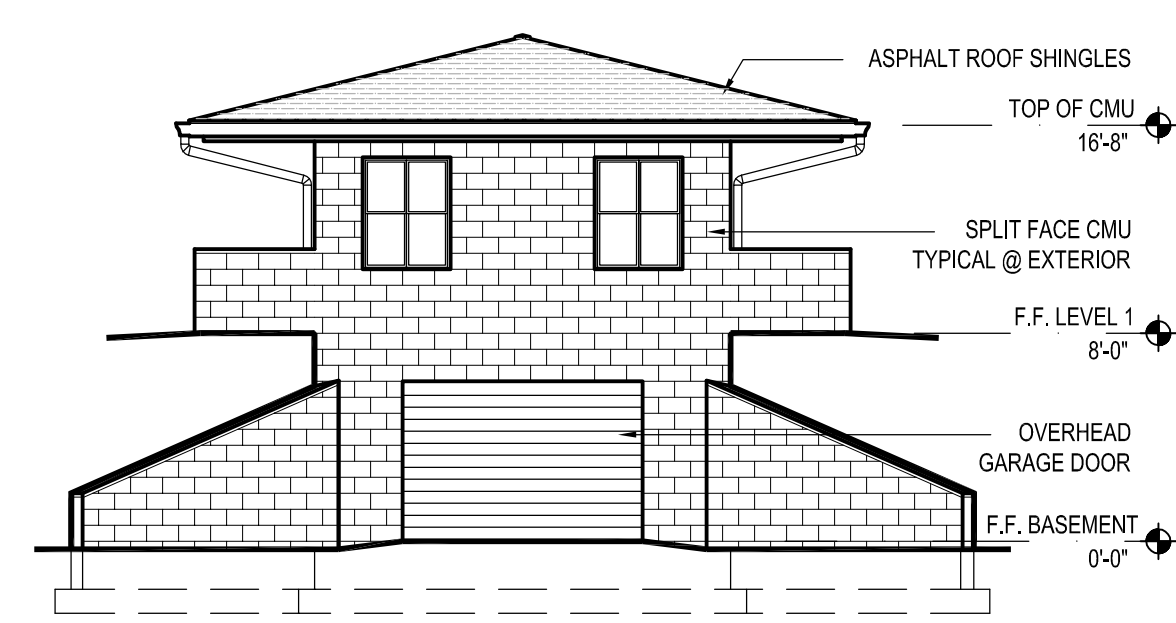
**TOILET COMPARTMENT MANEUVERING SPACE LEGEND**

SYM	DESCRIPTION
⊙	60" DIAMETER TURNING CIRCLE
⊖	30" x 48" MANEUVERING SPACE PAST DOOR SWING
⊕	30" x 48" CLEARANCE FOR LAVATORY
⊗	60" x 60" MANEUVERING CLEARANCE AT DOOR (PULL SIDE) 48" x 48" PUSH SIDE
⊙	60" x 60" CLEARANCE AT TOILET

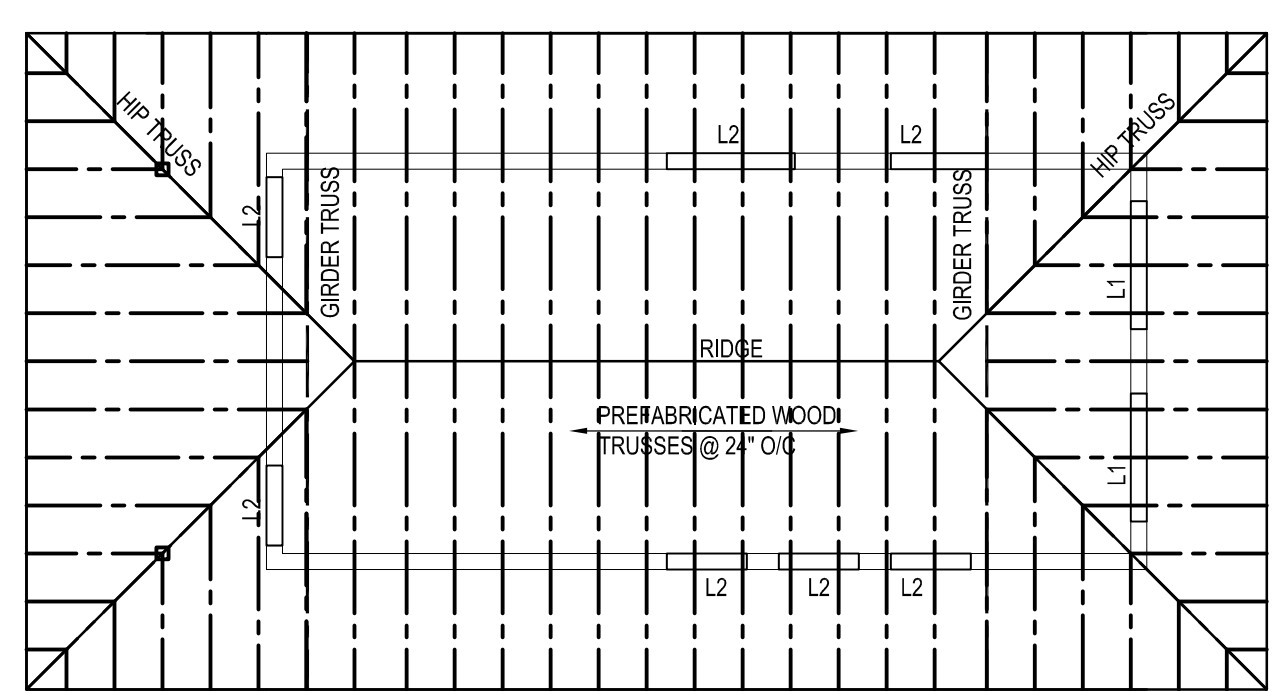
**NOTE:**  
 1. MANEUVERING SPACES CAN OVERLAP.  
 2. A FLOORING FIXTURE CANNOT BE IN THE MANEUVERING SPACE OF ANOTHER FIXTURE.  
 3. POST MOUNTED OBJECTS SHALL NOT PROJECT INTO THE APPROACH PATH OF A MANEUVERING SPACE BY MORE THAN 6-INCHES.



3 LEVEL 2 PLAN  
A2 1/8" = 1'-0"



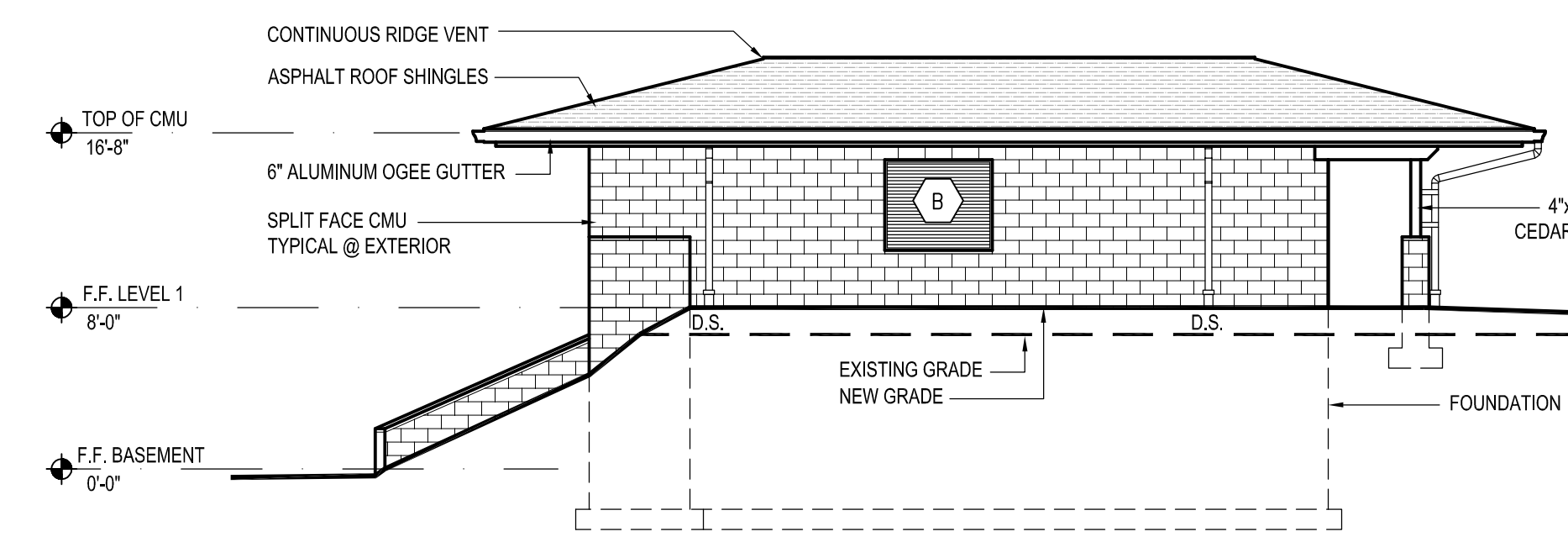
7 ELEVATION  
A2 1/8" = 1'-0"



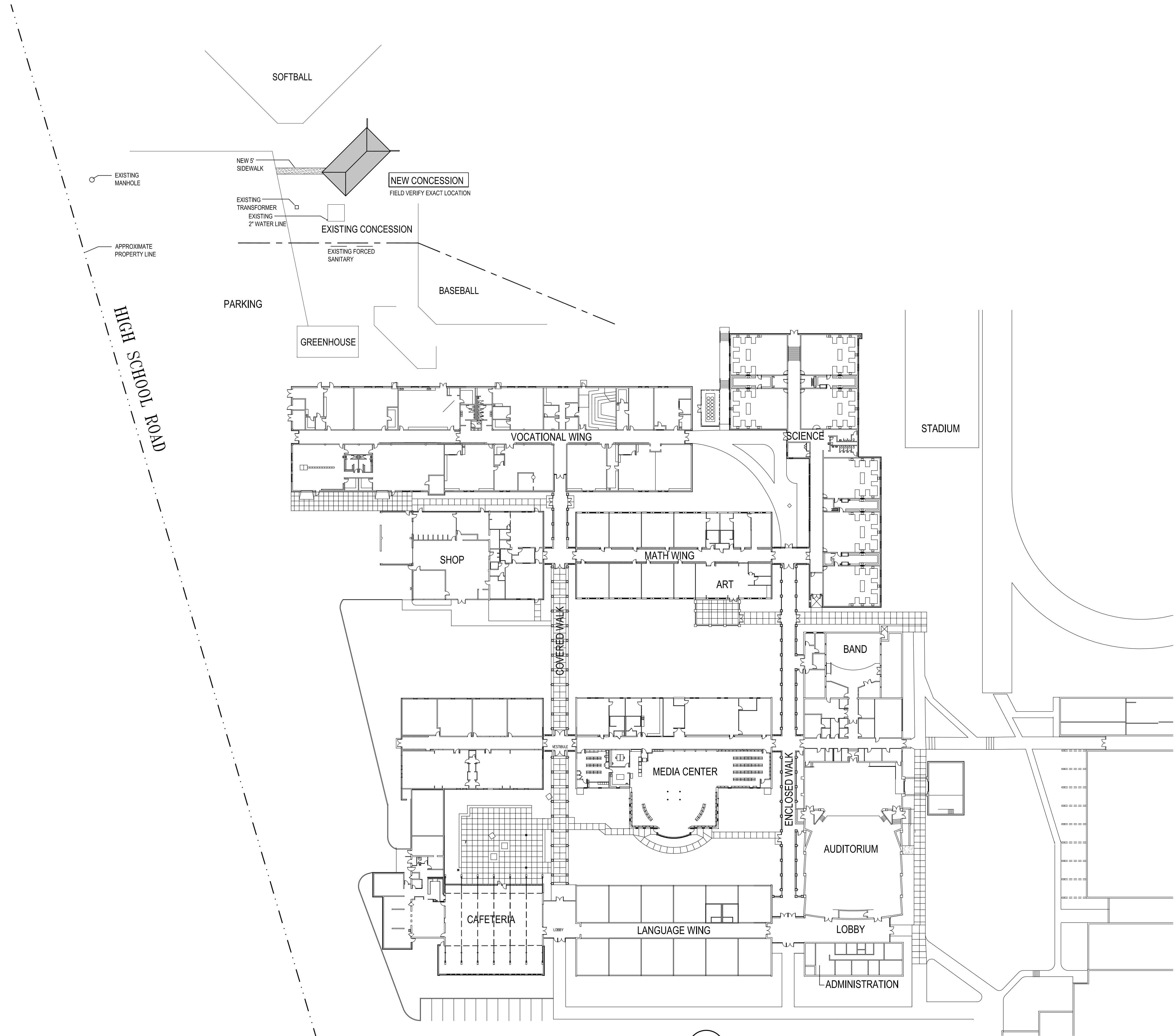
4 ROOF FRAMING PLAN  
A2 1/8" = 1'-0"

**LINTEL SCHEDULE**

L1	
L2	
L3	



8 ELEVATION  
A2 1/8" = 1'-0"

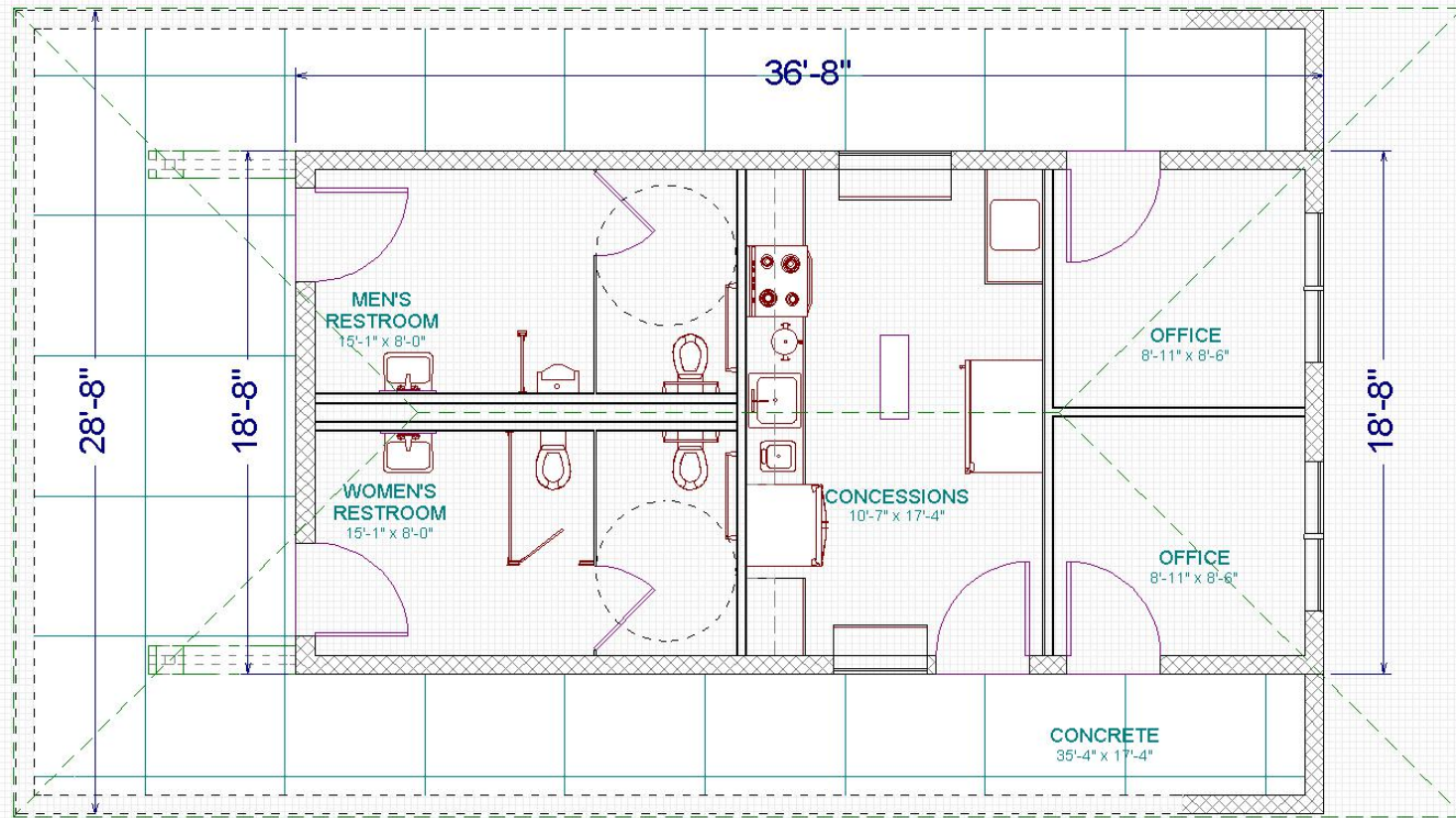


1 CAMPUS PLAN  
1" = 40'

**NOT FOR CONSTRUCTION FOR REVIEW ONLY**

**BREVARD HIGH SCHOOL  
BASEBALL-SOFTBALL  
RESTROOMS AND CONCESSION  
BREVARD, NORTH CAROLINA**

Revision  
  
Project number  
1341  
Drawn by  
CEG  
Name  
SITE PLAN  
  
Date  
AUG 1, 2013  
Sheet



1<sup>st</sup> Floor – 685 sq ft.

- Split-face insulated block exterior walls, painted on interior
- Fire-rated drywall and metal stud interior walls, painted
- Sealed concrete floors on metal pan
- Hollow metal doors and windows
- Insulated metal roof on wood trusses
- Electric space heaters, no A/C
- ADA compliant concrete walks around perimeter
- 2 fixture ADA compliant restrooms

Basement – 685 sq ft.

- Concrete block wall, continuous core
- Gravel floor
- Steel overhead sectional door

Cost – app. \$180,000 as drawn

Cost without offices – deduct app. \$19,000

In-kind and cash pledges to date - \$30-40,000

