

## Fact

Half of students who miss 2-4 days in September will go on to miss nearly a month of school.

## Fact

An estimated 5 million to 7.5 million U.S. students miss nearly a month of school each year.

## Fact

Poor attendance can influence whether kids read proficiently by grade 3 or be held back.

## Fact

By 6th grade, chronic absence becomes a leading indicator that a student will drop out of high school.

## Fact

Research shows that missing only an average of 2 days a month negatively affects academic performance.

## Fact

Excused and unexcused absences have the same negative effect on student academic performance.

## Fact

Low income students are 4 times more likely to be chronically absent.

## Fact

When a student improves attendance, they improve their chances of graduating.



## Fact

Attendance improves with parent participation and mentors for chronically absent students.

## Fact

Many schools only track unexcused absences, when they should be tracking excused as well.



# TCS Attendance

---

Rebound at Davidson River School

Noticeable trend

Two year project(s)

- Data
- Policy
- Community
  - Truancy Task Force

Chronic Absenteeism vs Truancy

# Attendance Matters

---

Differences in absentee rates and projections for graduation observed as early as kindergarten.

By 6th grade, chronic absence becomes a leading indicator that a student will drop out of high school.

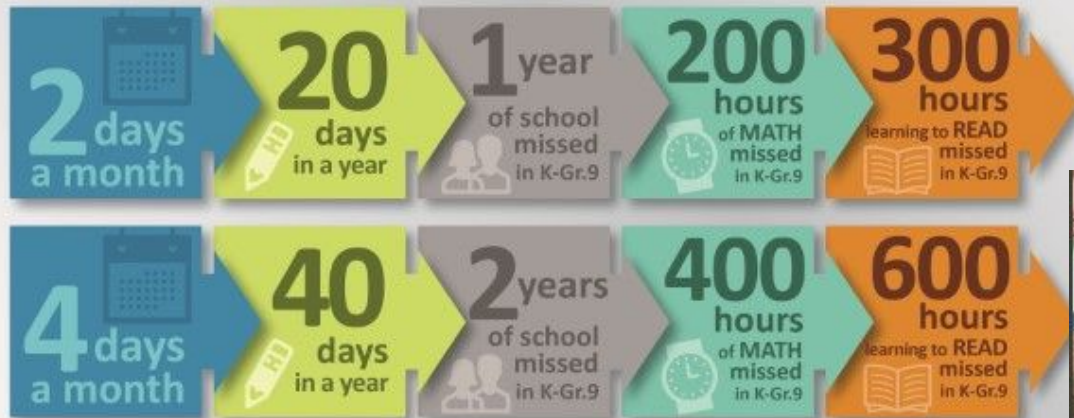
By 9th grade, attendance shown to be a key indicator significantly correlated with high school graduation.

Absences affect everyone

- Teachers must spend more time “catching students up”
- Discipline data shows more disruptions from chronically absent students

## Student absences

When children regularly miss school, they miss out on fundamental reading and math skills and the chance to build good attendance habits for the future.



# Chronic Absenteeism

---

NC: A student whose total number of absences is equal to or greater than 10% of the total number of days that such student has been enrolled at such school during such school year (18 days)

2015 ESSA reauthorized NCLB giving states power to set their own accountability standards within certain parameters.

- School Quality
- NC did not include

Many districts have yet to develop the data capacity for tracking absences for individual students, and thus do not know the extent to which chronic early absence is a problem in any or all of their schools.

A school can have average daily attendance of 90% and still have 40% of its students chronically absent, because on different days, different students make up that 90%.

# Truancy Vs. Chronic Absence

---

## TRUANCY

- Counts only unexcused absences
- Emphasizes compliance with school rules
- Relies on legal & administrative solutions

≥ 10 **Unexcused** Absences

Vs.

## CHRONIC ABSENCE

- Counts all absences: excused, unexcused & suspensions
- Emphasizes academic impact of missed days
- Uses community-based, positive strategies

≥ 18 Absences

# How Well Should We Be Doing?

---

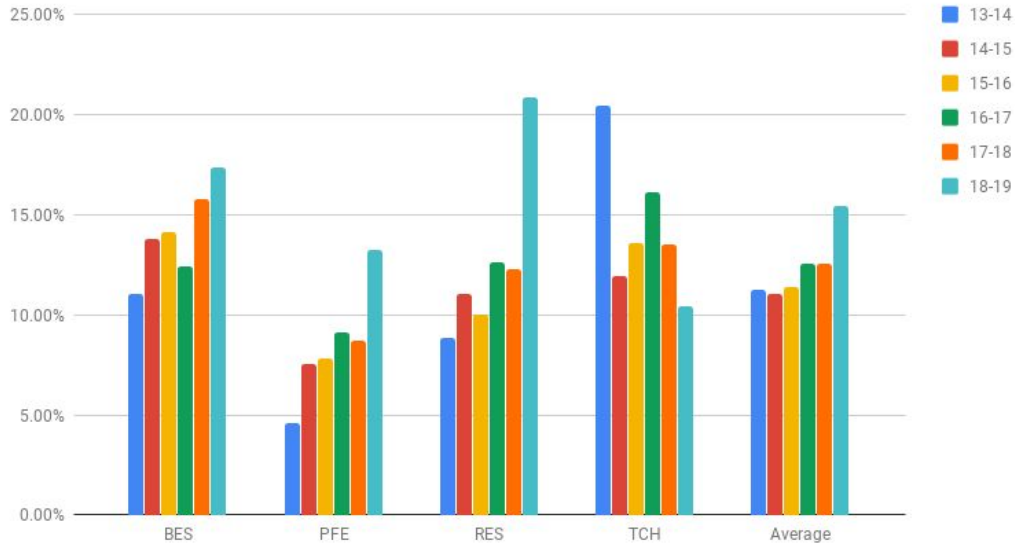
- In 2015-16, the average for North Carolina was 14.8%
  - Slightly lower than the national rate of 15.5%
  - Higher than SC, TN and GA
- Typically increases with age
  - 20% High School
  - 14% Middle School
  - 13% Elementary

# 6 Year Trends

<b>% of Students at Each School Who Missed 10% or More of Days Enrolled</b>						
	<b>13-14</b>	<b>14-15</b>	<b>15-16</b>	<b>16-17</b>	<b>17-18</b>	<b>18-19</b>
<b>BES</b>	11.04%	13.78%	14.13%	12.42%	15.76%	17.35%
<b>BMS</b>	12.22%	13.96%	12.62%	14.53%	14.93%	15.50%
<b>BHS</b>	23.79%	10.09%	11.39%	11.62%	9.37%	12.35%
<b>DRS</b>	62.24%	64.14%	62.73%	71.68%	76.38%	52.17%
<b>PFE</b>	4.59%	7.52%	7.85%	9.15%	8.72%	13.26%
<b>RES</b>	8.88%	11.02%	10.03%	12.61%	12.28%	20.86%
<b>RMS</b>	10.46%	10.88%	10.45%	13.55%	14.62%	18.64%
<b>RHS</b>	24.38%	36.51%	35.68%	43.14%	26.27%	32.43%
<b>TCH</b>	20.41%	11.92%	13.61%	16.11%	13.48%	10.40%
<b>Average</b>	<b>19.78%</b>	<b>19.98%</b>	<b>19.83%</b>	<b>22.76%</b>	<b>21.31%</b>	<b>21.44%</b>

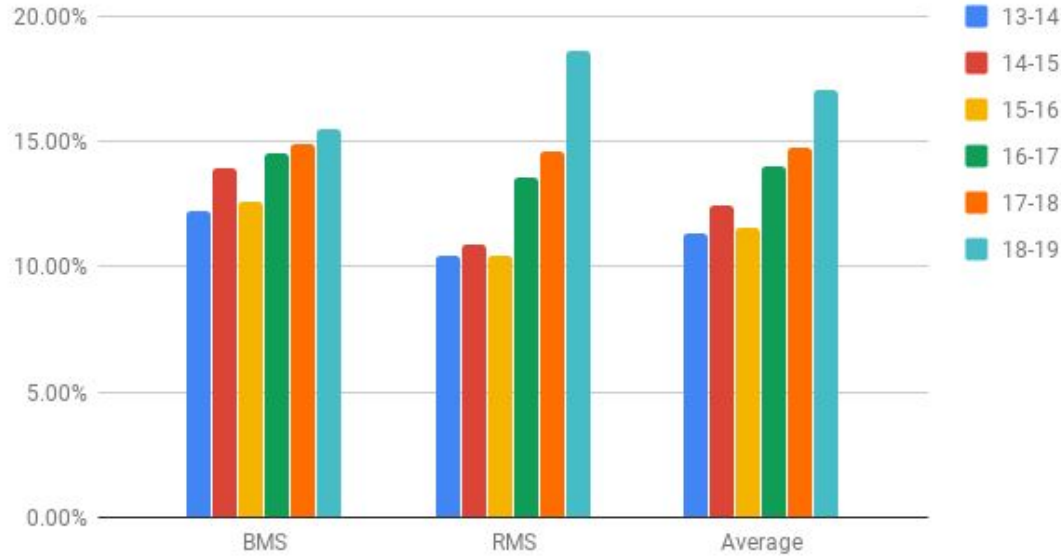


## 6 Years Elementary Chronic Absenteeism



	13-14	14-15	15-16	16-17	17-18	18-19
<b>BES</b>	11.04%	13.78%	14.13%	12.42%	15.76%	17.35%
<b>PFE</b>	4.59%	7.52%	7.85%	9.15%	8.72%	13.26%
<b>RES</b>	8.88%	11.02%	10.03%	12.61%	12.28%	20.86%
<b>TCH</b>	20.41%	11.92%	13.61%	16.11%	13.48%	10.40%
<b>Average</b>	11.23%	11.06%	11.41%	12.57%	12.56%	15.47%

## 6 Years Middle Schools Chronic Absenteeism

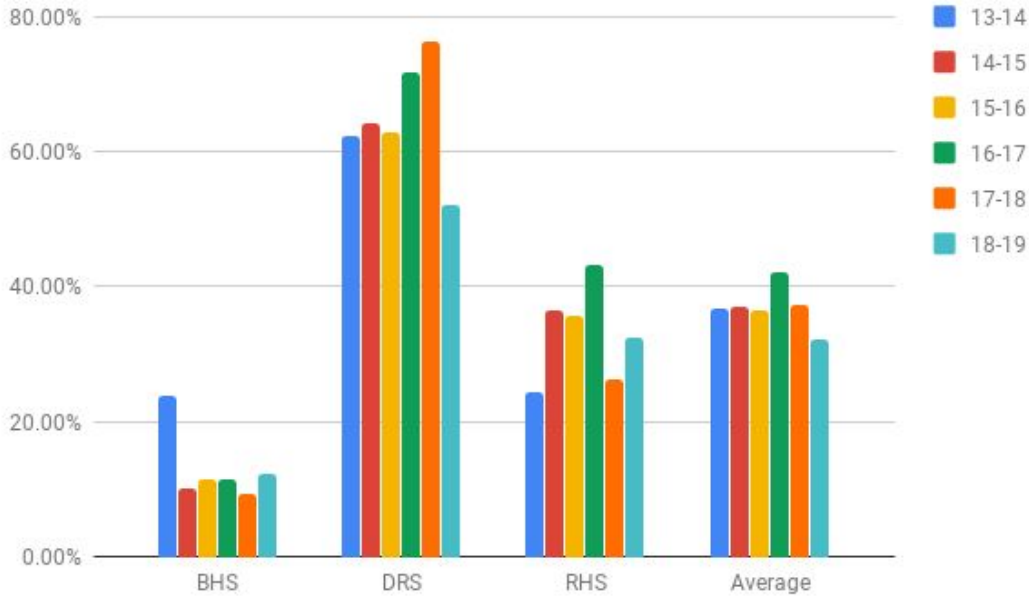


	<b>13-14</b>	<b>14-15</b>	<b>15-16</b>	<b>16-17</b>	<b>17-18</b>	<b>18-19</b>
<b>BMS</b>	12.22%	13.96%	12.62%	14.53%	14.93%	15.50%
<b>RMS</b>	10.46%	10.88%	10.45%	13.55%	14.62%	18.64%
<b>Average</b>	11.34%	12.42%	11.54%	14.04%	14.78%	17.07%

# Elementary and Middle CA Raw data

<b># CA Students</b>	<b>17-18</b>	
<b>BES</b>	93	588
<b>BMS</b>	83	556
<b>PFE</b>	47	539
<b>RES</b>	41	334
<b>RMS</b>	38	260
<b>TCH</b>	19	129
<b>Total</b>	321	2406

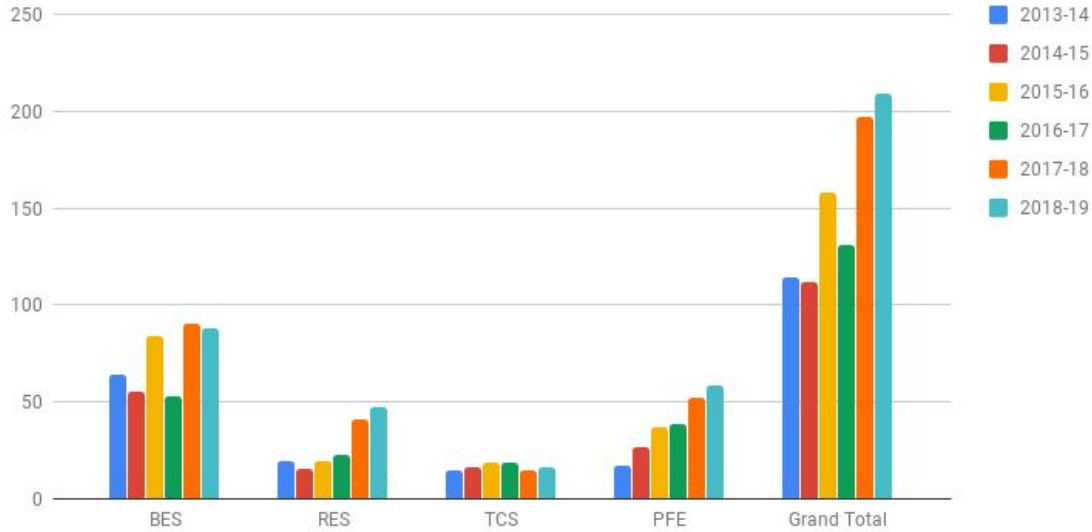
## 6 Years High School Chronic Absenteeism



	13-14	14-15	15-16	16-17	17-18	18-19
<b>BHS</b>	23.79%	10.09%	11.39%	11.62%	9.37%	12.35%
<b>DRS</b>	62.24%	64.14%	62.73%	71.68%	76.38%	52.17%
<b>RHS</b>	24.38%	36.51%	35.68%	43.14%	26.27%	32.43%
<b>Average</b>	36.80%	36.91%	36.60%	42.15%	37.34%	32.32%

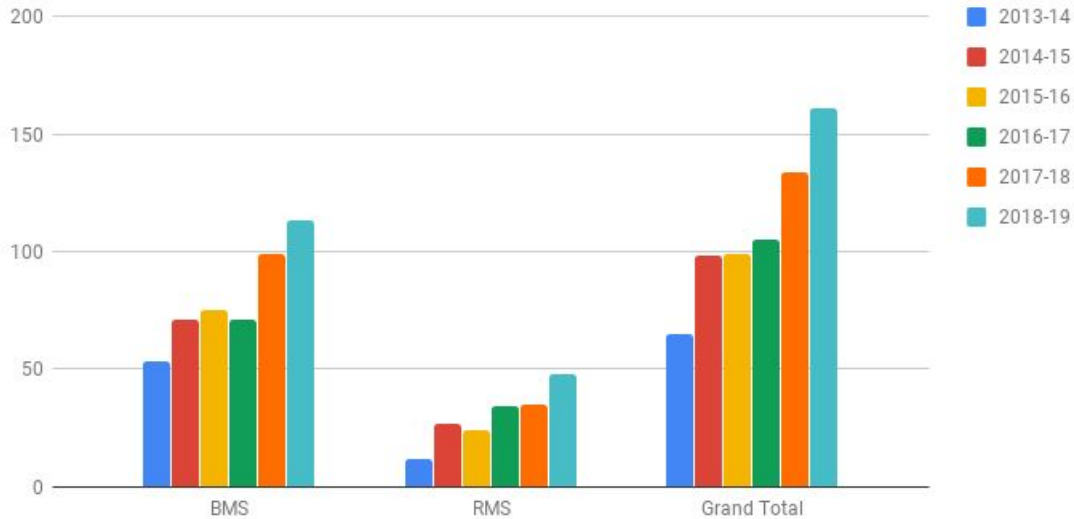
	Student ID	13-14	14-15	15-16	16-17	17-18 (BMS)
BMS		6.74 (PFE)	18.08 (BES)	16.67 (BES)	20.83 (BMS)	24.44
		12.99 (BES)	12.73 (BES)	31.67 (BES)	27.18 (BMS)	27.37
		4.49 (PFE)	12.43 (PFE)	Hazlewood Elem	10.56 (BMS)	27.78
		9.86 (BES)	14.4 (BES)		42.65 (BMS)	28.28
		8.43 (BES)	12.99 (BES)	12.78 (BES)	21.67 (BMS)	28.33
		15.77 (BES)	19.77 (BES)	42.22 (BMS)	25 (BMS)	31.67
		3.93 (BES)	11.86 (BES)	11.67 (BES)	18.33 (BES)	35.56
		6.18 (PFE)	7.91 (PFE)	8.72 (BMS)	7.22 (BMS)	36.36
		11.29 (RES) 25.89 (PFE)	2.26 (RES)	15.07 (BMS)	27.78 (BMS)	68.18
		10.11 (PFE)	13.56 (PFE)	22.22 (BMS)	68.89 (BMS)	89.52
		2 years prior of Chronic Absenteeism		90%		
		3 years prior of Chronic Absenteeism		70%		
		4 years prior of Chronic Absenteeism		30%		

## Number of Elementary Students with 10 or More Unexcused Absences



Year	2013-14	2014-15	2015-16	2016-17	2017-18	2018-19
<b>BES</b>	64	55	84	53	90	88
<b>RES</b>	19	15	19	22	41	47
<b>TCH</b>	14	16	18	18	14	16
<b>PFE</b>	17	26	37	38	52	58
<b>Grand Total</b>	114	112	158	131	197	209
<b>Out of</b>	1698	1700	1691	1661	1603	1525
<b>% of Students</b>	6.71%	6.59%	9.34%	7.89%	12.29%	13.70%

## Number of Middle Sch Students with 10 or More Unexcused Absences



Year	2013-14	2014-15	2015-16	2016-17	2017-18	2018-19
<b>BMS</b>	53	71	75	71	99	113
<b>RMS</b>	12	27	24	34	35	48
<b>Grand Total</b>	65	98	99	105	134	161
<b>Out of</b>	897	867	790	771	819	799
<b>% of School</b>	7.25%	11.30%	12.53%	13.62%	16.36%	20.15%

# Misdemeanors

Year	AREA	FMT	CHARGE	CHARGE_TEXT	CRS_CASE S_FILED	CR_CASES _FILED	CR_CASES _PENDING
17-18	TRANSYLVANIA	M	3822	SCHOOL ATTENDANCE LAW VIOL	0	24	16
16-17	TRANSYLVANIA	M	3822	SCHOOL ATTENDANCE LAW VIOL	0	15	8
15-16	TRANSYLVANIA	M	3823	SCHOOL ATTENDANCE LAW VIOL	0	21	17
14-15	TRANSYLVANIA	M	3824	SCHOOL ATTENDANCE LAW VIOL	0	6	1
13-14	TRANSYLVANIA	M	3825	SCHOOL ATTENDANCE LAW VIOL	0	3	1



# Status Offense = Undisciplined

	POPULATION AGE GROUPS			COMPLAINTS RECEIVED						
	Juvenile Population Ages 6-15	Juvenile Population Ages 6-17	Juvenile Population Ages 10-17	Violent Class A - E	Serious Class F - I, A1	Minor Class 1 - 3	Infraction	Status	Total Delinquent Complaints	Total Complaints
2017	3,180	3,975	2,727	0	1	31	0	23	32	55
2016	3,182	3,973	2,725	2	10	46	0	19	58	77
2015	3172	3976	2732	0	11	38	0	18	49	67
2014	3178	3997	2762	0	12	46	0	10	58	68
2013	3217	4019	2785	0	4	33	0	13	37	50

County	Area	District	Juvenile	Juvenile	Juvenile	Violent	Serious	Minor	Infractions	Status	Total	Total	Undisciplined	Delinquent
			POPULATION AGE GROUPS			COMPLAINTS RECEIVED								RATES
STATE			1,314,230	1,582,313	1,064,658	890	7,588	17,166	93	2,428	25,737	28,165	1.53	19.58
Alleghany	Western	23	1,183	1,446	1,002	0	8	14	0	15	22	37	10.37	18.6
Haywood	Western	30	6,336	7,773	5,351	1	19	76	0	77	96	173	9.91	15.15
Cherokee	Western	30	2,891	3,519	2,388	1	11	38	0	30	50	80	8.53	17.3
Mitchell	Western	24	1,632	1,947	1,324	1	1	15	1	16	18	34	8.22	11.03
Jackson	Western	30	4,142	4,995	3,350	1	4	97	1	41	103	144	8.21	24.87
Burke	Western	25	10,397	13,043	9,002	11	57	158	0	77	226	303	5.9	21.74
Transylvania	Western	29	3,180	3,975	2,727	0	1	31	0	23	32	55	5.79	10.06
Clay	Western	30	1,149	1,387	973	0	4	7	1	8	12	20	5.77	10.44
Gaston	Western	27	27,765	33,799	22,970	6	73	393	3	177	475	652	5.24	17.11
Catawba	Western	25	20,102	24,375	16,637	3	59	260	0	127	322	449	5.21	16.02
McDowell	Western	29	5,319	6,538	4,467	8	22	65	0	33	95	128	5.05	17.86
Onslow	Eastern	04	27,342	31,511	17,580	14	99	589	0	157	702	859	4.98	25.67
Henderson	Western	29	12,919	15,591	10,672	0	29	166	0	76	195	271	4.87	15.09
Yancey	Western	24	1,875	2,304	1,618	0	6	34	1	11	41	52	4.77	21.87
Davie	Piedmont	22	5,133	6,349	4,451	6	22	83	0	30	111	141	4.73	21.62
Avery	Western	24	1,577	1,930	1,300	2	2	24	0	9	28	37	4.66	17.76
Dare	Eastern	01	3,926	4,720	3,208	0	41	88	5	21	134	155	4.45	34.13
Person	Central	09	4,942	5,925	3,991	2	27	97	0	26	126	152	4.39	25.5
Polk	Western	29	2,101	2,596	1,824	0	2	27	2	11	31	42	4.24	14.75

In 2017, Transylvania County had the **7th highest rate of undisciplined complaints in the state.**

100% of these were for truancy, which represented 42% of all juvenile complaints in the county.

# How Can We Improve Attendance?

---

- [file:///E:/My%20Drive/DRS/2017\\_2018/Truancy%20Resources/10-Steps-Communities-Can-Take-to-Reduce-Chronic-Absence-6-15-12.pdf](file:///E:/My%20Drive/DRS/2017_2018/Truancy%20Resources/10-Steps-Communities-Can-Take-to-Reduce-Chronic-Absence-6-15-12.pdf)
- <https://www.attendanceworks.org/wp-content/uploads/2019/06/District-Attendance-Team-Planning-Calendar-rev-7-8-19-SAMPLE-ACTIVITIES.pdf>

# Policy Revision

---

Limiting the number of notes parents can write

- This will likely reduce number of Excused absences and increase number of Unexcused
- More Unexcused could lead to more legal consequences

Grade reduction after \_\_\_ # absences

75% of day (instead of 50%)